

**Complement C3c Antibody**  
**Rabbit Polyclonal Antibody**  
**Catalog # ALS15236****Specification**

---

**Complement C3c Antibody - Product Information**

Application	IHC
Primary Accession	<a href="#">P01024</a>
Reactivity	Human
Host	Rabbit
Clonality	Polyclonal

**Complement C3c Antibody - Additional Information****Gene ID** 718**Other Names**

Complement C3, C3 and PZP-like alpha-2-macroglobulin domain-containing protein 1, Complement C3 beta chain, C3-beta-c, C3bc, Complement C3 alpha chain, C3a anaphylatoxin, Acylation stimulating protein, ASP, C3adesArg, Complement C3b alpha' chain, Complement C3c alpha' chain fragment 1, Complement C3dg fragment, Complement C3g fragment, Complement C3d fragment, Complement C3f fragment, Complement C3c alpha' chain fragment 2, C3, CPAMD1

**Target/Specificity**

Human Complement C3c. In immunoelectrophoresis against fresh human serum, a single precipitin line is obtained in the beta-1 region representing native C3. Against serum containing partly activated C3, a precipitin line is obtained which extends from ...

**Reconstitution & Storage**

Store lyophilized at 4°C. Once reconstituted, aliquot and store at -20°C. Avoid freeze/thaw cycles. Store undiluted.

**Precautions**

Complement C3c Antibody is for research use only and not for use in diagnostic or therapeutic procedures.

**Complement C3c Antibody - Protein Information****Name** C3**Synonyms** CPAMD1**Function**

C3 plays a central role in the activation of the complement system. Its processing by C3 convertase is the central reaction in both classical and alternative complement pathways. After activation C3b can bind covalently, via its reactive thioester, to cell surface carbohydrates or immune aggregates. [C3-beta-c]: Acts as a chemoattractant for neutrophils in chronic inflammation.

**Cellular Location**  
Secreted.

**Tissue Location**  
Plasma. The acylation stimulating protein (ASP) is expressed in adipocytes and released into the plasma during both the fasting and postprandial periods.

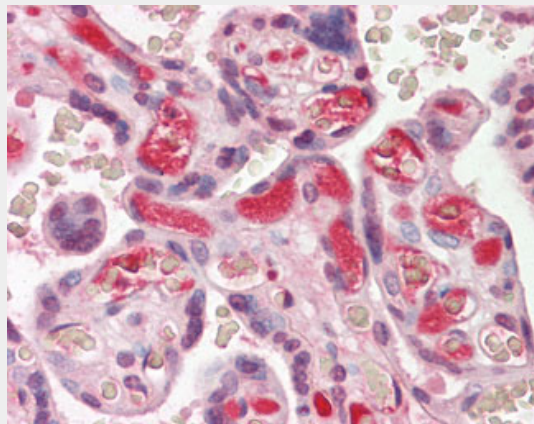
**Volume**  
1000  $\mu$ l

### Complement C3c Antibody - Protocols

Provided below are standard protocols that you may find useful for product applications.

- [Western Blot](#)
- [Blocking Peptides](#)
- [Dot Blot](#)
- [Immunohistochemistry](#)
- [Immunofluorescence](#)
- [Immunoprecipitation](#)
- [Flow Cytometry](#)
- [Cell Culture](#)

### Complement C3c Antibody - Images



Anti-Complement C3/C3c antibody IHC of human placenta.