

BCHE / Cholinesterase Antibody
Rabbit Polyclonal Antibody
Catalog # ALS15229**Specification**

BCHE / Cholinesterase Antibody - Product Information

Application	IHC
Primary Accession	P06276
Reactivity	Human
Host	Rabbit
Clonality	Polyclonal
Calculated MW	68kDa KDa

BCHE / Cholinesterase Antibody - Additional Information**Gene ID** 590**Other Names**

Cholinesterase, 3.1.1.8, Acylcholine acylhydrolase, Butyrylcholine esterase, Choline esterase II, Pseudocholinesterase, BCHE, CHE1

Target/Specificity

Human BCHE / Butyrylcholinesterase. The reagents were evaluated for potency, purity and specificity using most or all of the following techniques: immunoelectrophoresis, cross-immunoelectrophoresis, single radial immunodiffusion (Ouchterlony), block ...

Reconstitution & Storage

Store lyophilized at 4°C. Once reconstituted, aliquot and store at -20°C. Avoid freeze/thaw cycles. Store undiluted.

Precautions

BCHE / Cholinesterase Antibody is for research use only and not for use in diagnostic or therapeutic procedures.

BCHE / Cholinesterase Antibody - Protein Information**Name** BCHE**Synonyms** CHE1**Function**

Esterase with broad substrate specificity. Contributes to the inactivation of the neurotransmitter acetylcholine. Can degrade neurotoxic organophosphate esters.

Cellular Location

Secreted

Tissue Location

Detected in blood plasma (at protein level). Present in most cells except erythrocytes

Volume

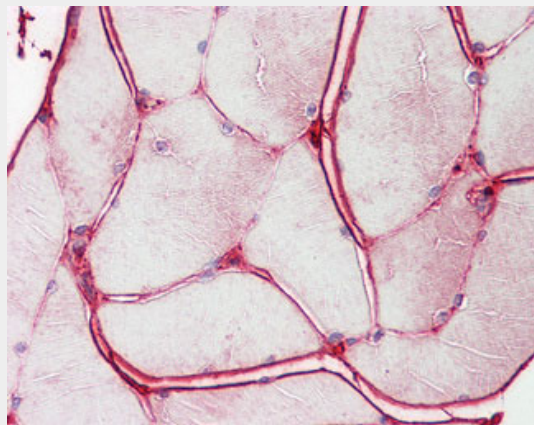
50 μ l

BCHE / Cholinesterase Antibody - Protocols

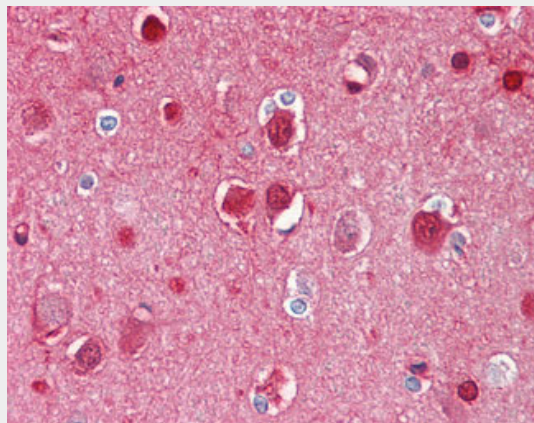
Provided below are standard protocols that you may find useful for product applications.

- [Western Blot](#)
- [Blocking Peptides](#)
- [Dot Blot](#)
- [Immunohistochemistry](#)
- [Immunofluorescence](#)
- [Immunoprecipitation](#)
- [Flow Cytometry](#)
- [Cell Culture](#)

BCHE / Cholinesterase Antibody - Images



Anti-BCHE / Cholinesterase antibody IHC of human skeletal muscle.



Anti-BCHE / Cholinesterase antibody IHC of human brain, cortex.

BCHE / Cholinesterase Antibody - Background

Esterase with broad substrate specificity. Contributes to the inactivation of the neurotransmitter

acetylcholine. Can degrade neurotoxic organophosphate esters.

BCHE / Cholinesterase Antibody - References

- Prody C.A.,et al.Proc. Natl. Acad. Sci. U.S.A. 84:3555-3559(1987).
McTiernan C.,et al.Proc. Natl. Acad. Sci. U.S.A. 84:6682-6686(1987).
Arpagaus M.,et al.Biochemistry 29:124-131(1990).
Ota T.,et al.Nat. Genet. 36:40-45(2004).
Lockridge O.,et al.J. Biol. Chem. 262:549-557(1987).