

CYCS / Cytochrome c Antibody (clone 7H8)
Mouse Monoclonal Antibody
Catalog # ALS15203

Specification

CYCS / Cytochrome c Antibody (clone 7H8) - Product Information

Application	IHC
Primary Accession	P99999
Reactivity	Human, Mouse, Rat
Host	Mouse
Clonality	Monoclonal
Calculated MW	12kDa KDa

CYCS / Cytochrome c Antibody (clone 7H8) - Additional Information

Gene ID 54205

Other Names

Cytochrome c, CYCS, CYC

Reconstitution & Storage

Store at 4°C, avoid repeated freeze thaw cycles.

Precautions

CYCS / Cytochrome c Antibody (clone 7H8) is for research use only and not for use in diagnostic or therapeutic procedures.

CYCS / Cytochrome c Antibody (clone 7H8) - Protein Information

Name CYCS

Synonyms CYC

Function

Electron carrier protein. The oxidized form of the cytochrome c heme group can accept an electron from the heme group of the cytochrome c1 subunit of cytochrome reductase. Cytochrome c then transfers this electron to the cytochrome oxidase complex, the final protein carrier in the mitochondrial electron-transport chain.

Cellular Location

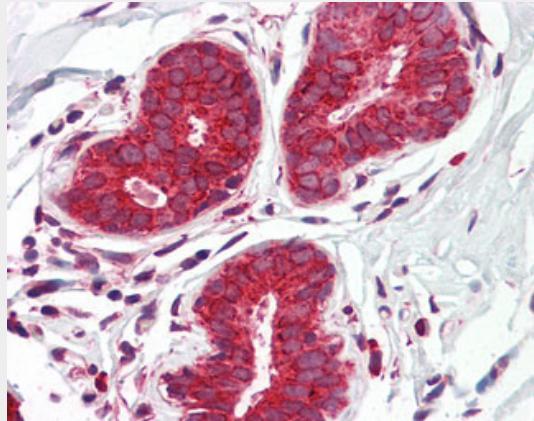
Mitochondrion intermembrane space. Note=Loosely associated with the inner membrane

CYCS / Cytochrome c Antibody (clone 7H8) - Protocols

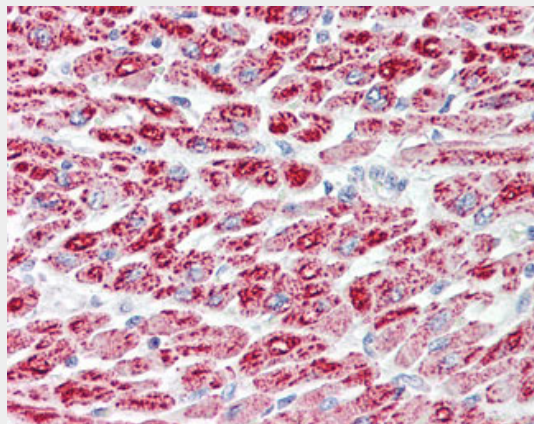
Provided below are standard protocols that you may find useful for product applications.

- [Western Blot](#)
- [Blocking Peptides](#)
- [Dot Blot](#)
- [Immunohistochemistry](#)
- [Immunofluorescence](#)
- [Immunoprecipitation](#)
- [Flow Cytometry](#)
- [Cell Culture](#)

CYCS / Cytochrome c Antibody (clone 7H8) - Images



Anti-Cytochrome c antibody IHC of human breast.



Anti-Cytochrome c antibody IHC of human heart.

CYCS / Cytochrome c Antibody (clone 7H8) - Background

Electron carrier protein. The oxidized form of the cytochrome c heme group can accept an electron from the heme group of the cytochrome c1 subunit of cytochrome reductase. Cytochrome c then transfers this electron to the cytochrome oxidase complex, the final protein carrier in the mitochondrial electron-transport chain.

CYCS / Cytochrome c Antibody (clone 7H8) - References

- Evans M.J., et al. Proc. Natl. Acad. Sci. U.S.A. 85:9625-9629(1988).
Kalnina N., et al. Submitted (MAY-2003) to the EMBL/GenBank/DDBJ databases.
Ota T., et al. Nat. Genet. 36:40-45(2004).
Bechtel S., et al. BMC Genomics 8:399-399(2007).
Hillier L.W., et al. Nature 424:157-164(2003).

