

**CEACAM5 / CD66e Antibody (clone 36H1)**  
**Mouse Monoclonal Antibody**  
**Catalog # ALS15194****Specification**

---

**CEACAM5 / CD66e Antibody (clone 36H1) - Product Information**

Application	<b>WB, IHC</b>
Primary Accession	<a href="#">P06731</a>
Reactivity	<b>Human</b>
Host	<b>Mouse</b>
Clonality	<b>Monoclonal</b>
Calculated MW	<b>77kDa KDa</b>

**CEACAM5 / CD66e Antibody (clone 36H1) - Additional Information****Gene ID** 1048**Other Names**

Carcinoembryonic antigen-related cell adhesion molecule 5, Carcinoembryonic antigen, CEA, Meconium antigen 100, CD66e, CEACAM5, CEA

**Reconstitution & Storage**

Long term: -20°C; Short term: -20°C

**Precautions**

CEACAM5 / CD66e Antibody (clone 36H1) is for research use only and not for use in diagnostic or therapeutic procedures.

**CEACAM5 / CD66e Antibody (clone 36H1) - Protein Information****Name** CEACAM5**Synonyms** CEA**Function**

Cell surface glycoprotein that plays a role in cell adhesion, intracellular signaling and tumor progression (PubMed: [10864933](http://www.uniprot.org/citations/10864933), PubMed: [10910050](http://www.uniprot.org/citations/10910050), PubMed: [2803308](http://www.uniprot.org/citations/2803308)). Mediates homophilic and heterophilic cell adhesion with other carcinoembryonic antigen-related cell adhesion molecules, such as CEACAM6 (PubMed: [2803308](http://www.uniprot.org/citations/2803308)). Plays a role as an oncogene by promoting tumor progression; induces resistance to anoikis of colorectal carcinoma cells (PubMed: [10910050](http://www.uniprot.org/citations/10910050)).

**Cellular Location**

Cell membrane; Lipid-anchor, GPI-anchor. Apical cell membrane. Cell surface Note=Localized to

the apical glycolyx surface

**Tissue Location**

Expressed in columnar epithelial and goblet cells of the colon (at protein level) (PubMed:10436421). Found in adenocarcinomas of endodermally derived digestive system epithelium and fetal colon.

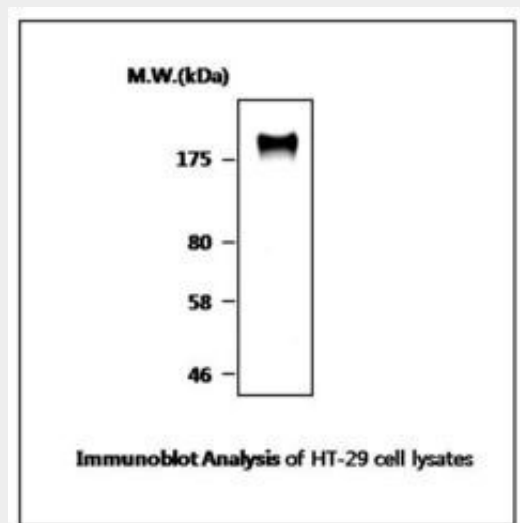
**Volume**

50  $\mu$ l

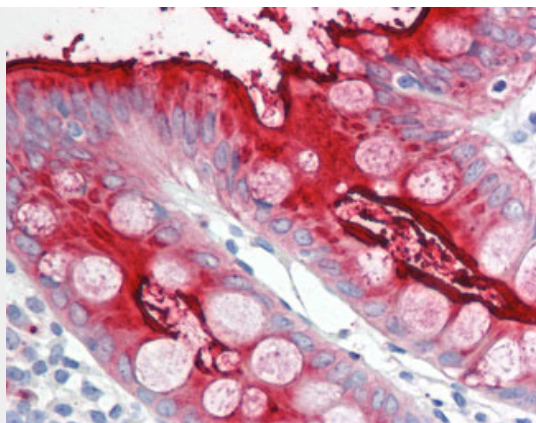
**CEACAM5 / CD66e Antibody (clone 36H1) - Protocols**

Provided below are standard protocols that you may find useful for product applications.

- [Western Blot](#)
- [Blocking Peptides](#)
- [Dot Blot](#)
- [Immunohistochemistry](#)
- [Immunofluorescence](#)
- [Immunoprecipitation](#)
- [Flow Cytometry](#)
- [Cell Culture](#)

**CEACAM5 / CD66e Antibody (clone 36H1) - Images**

0



Anti-CEACAM5 / CEA antibody IHC of human colon.

### **CEACAM5 / CD66e Antibody (clone 36H1) - Background**

Cell surface glycoprotein that plays a role in cell adhesion and in intracellular signaling. Receptor for E.coli Dr adhesins.

### **CEACAM5 / CD66e Antibody (clone 36H1) - References**

- Beauchemin N.,et al.Mol. Cell. Biol. 7:3221-3230(1987).  
Barnett T.,et al.Genomics 3:59-66(1988).  
Schrewe H.,et al.Mol. Cell. Biol. 10:2738-2748(1990).  
Grimwood J.,et al.Nature 428:529-535(2004).  
Oikawa S.,et al.Biochem. Biophys. Res. Commun. 142:511-518(1987).