

IQSEC1 Antibody
Rabbit Polyclonal Antibody
Catalog # ALS15168**Specification**

IQSEC1 Antibody - Product Information

Application	IHC
Primary Accession	O6DN90
Reactivity	Human
Host	Rabbit
Clonality	Polyclonal
Calculated MW	108kDa KDa

IQSEC1 Antibody - Additional Information**Gene ID** 9922**Other Names**

IQ motif and SEC7 domain-containing protein 1, ADP-ribosylation factors guanine nucleotide-exchange protein 100, ADP-ribosylation factors guanine nucleotide-exchange protein 2, Brefeldin-resistant Arf-GEF 2 protein, IQSEC1, ARFGEP100, BRAG2, KIAA0763

Reconstitution & Storage

Short term 4°C, long term aliquot and store at -20°C, avoid freeze thaw cycles. Store undiluted.

Precautions

IQSEC1 Antibody is for research use only and not for use in diagnostic or therapeutic procedures.

IQSEC1 Antibody - Protein Information**Name** IQSEC1 ([HGNC:29112](#))**Function**

Guanine nucleotide exchange factor for ARF1 and ARF6 (PubMed:11226253, PubMed:24058294). Guanine nucleotide exchange factor activity is enhanced by lipid binding (PubMed:24058294). Accelerates GTP binding by ARFs of all three classes. Guanine nucleotide exchange protein for ARF6, mediating internalization of beta-1 integrin (PubMed:16461286). Involved in neuronal development (Probable). In neurons, plays a role in the control of vesicle formation by endocytoc cargo. Upon long term depression, interacts with GRIA2 and mediates the activation of ARF6 to internalize synaptic AMPAR receptors (By similarity).

Cellular Location

Cytoplasm. Nucleus. Postsynaptic density {ECO:0000250|UniProtKB:Q8R0S2}. Cytoplasmic vesicle, secretory vesicle, synaptic vesicle {ECO:0000250|UniProtKB:Q8R0S2}. Note=At steady

state, may be preferentially cytosolic

Tissue Location

Expressed in brain, ovary, heart, lung, liver, kidney and leukocytes. Moderate expression was also detected in lung, skeletal muscle, placenta, small intestine, pancreas, spleen and testis.

Volume

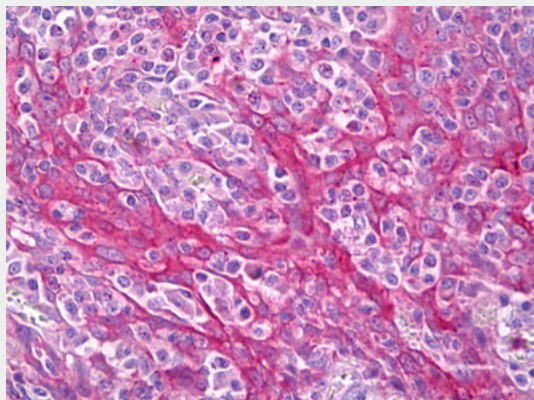
50 μ l

IQSEC1 Antibody - Protocols

Provided below are standard protocols that you may find useful for product applications.

- [Western Blot](#)
- [Blocking Peptides](#)
- [Dot Blot](#)
- [Immunohistochemistry](#)
- [Immunofluorescence](#)
- [Immunoprecipitation](#)
- [Flow Cytometry](#)
- [Cell Culture](#)

IQSEC1 Antibody - Images



Anti-IQSEC1 antibody IHC of human tonsil, squamous epithelium.

IQSEC1 Antibody - Background

In addition to accelerate GTP gamma S binding by ARFs of all three classes, it appears to function preferentially as a guanine nucleotide exchange protein for ARF6, mediating internalisation of beta-1 integrin.

IQSEC1 Antibody - References

- Dunphy J.L., et al. *Curr. Biol.* 16:315-320(2006).
Nagase T., et al. *DNA Res.* 5:277-286(1998).
Someya A., et al. *Proc. Natl. Acad. Sci. U.S.A.* 98:2413-2418(2001).
Dephoure N., et al. *Proc. Natl. Acad. Sci. U.S.A.* 105:10762-10767(2008).
Mayya V., et al. *Sci. Signal.* 2:RA46-RA46(2009).