

**Vimentin Antibody**  
**Chicken Polyclonal Antibody**  
**Catalog # ALS15163**

**Specification**

---

**Vimentin Antibody - Product Information**

Application	IHC
Primary Accession	<a href="#">P08670</a>
Reactivity	Human, Mouse
Host	Chicken
Clonality	Polyclonal
Calculated MW	54kDa KDa

**Vimentin Antibody - Additional Information**

**Gene ID** 7431

**Other Names**  
Vimentin, VIM

**Target/Specificity**  
Recognizes human and mouse Vimentin.

**Reconstitution & Storage**  
Short term 4°C, long term aliquot and store at -20°C, avoid freeze thaw cycles. Store undiluted.

**Precautions**  
Vimentin Antibody is for research use only and not for use in diagnostic or therapeutic procedures.

**Vimentin Antibody - Protein Information**

**Name** VIM ([HGNC:12692](#))

**Function**  
Vimentins are class-III intermediate filaments found in various non-epithelial cells, especially mesenchymal cells. Vimentin is attached to the nucleus, endoplasmic reticulum, and mitochondria, either laterally or terminally. Plays a role in cell directional movement, orientation, cell sheet organization and Golgi complex polarization at the cell migration front (By similarity). Protects SCRIB from proteasomal degradation and facilitates its localization to intermediate filaments in a cell contact-mediated manner (By similarity).

**Cellular Location**  
Cytoplasm. Cytoplasm, cytoskeleton. Nucleus matrix {ECO:0000250|UniProtKB:P31000}. Cell membrane {ECO:0000250|UniProtKB:P20152}

**Tissue Location**  
Highly expressed in fibroblasts, some expression in T- and B-lymphocytes, and little or no expression in Burkitt's lymphoma cell lines. Expressed in many hormone-independent mammary

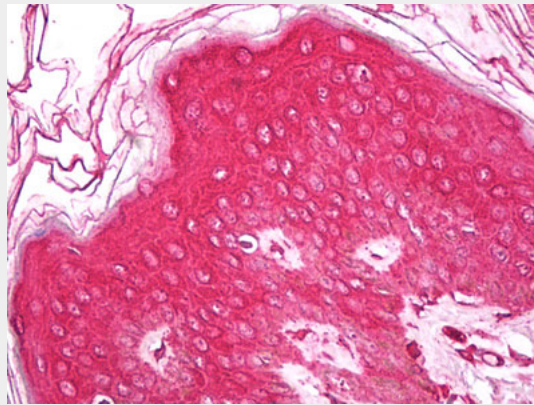
carcinoma cell lines.

### Vimentin Antibody - Protocols

Provided below are standard protocols that you may find useful for product applications.

- [Western Blot](#)
- [Blocking Peptides](#)
- [Dot Blot](#)
- [Immunohistochemistry](#)
- [Immunofluorescence](#)
- [Immunoprecipitation](#)
- [Flow Cytometry](#)
- [Cell Culture](#)

### Vimentin Antibody - Images



Anti-Vimentin antibody IHC of human skin, epidermis.

### Vimentin Antibody - Background

Vimentins are class-III intermediate filaments found in various non-epithelial cells, especially mesenchymal cells. Vimentin is attached to the nucleus, endoplasmic reticulum, and mitochondria, either laterally or terminally.

### Vimentin Antibody - References

- Ferrari S., et al. *Mol. Cell. Biol.* 6:3614-3620(1986).  
Honore B., et al. *Nucleic Acids Res.* 18:6692-6692(1990).  
Hartmann T.B., et al. *Br. J. Dermatol.* 150:252-258(2004).  
Zimbelmann R., et al. Submitted (JUN-2007) to the EMBL/GenBank/DDBJ databases.  
Ota T., et al. *Nat. Genet.* 36:40-45(2004).