

KRT1 / CK1 / Cytokeratin 1 Antibody (Internal)
Rabbit Polyclonal Antibody
Catalog # ALS15159

Specification

KRT1 / CK1 / Cytokeratin 1 Antibody (Internal) - Product Information

Application	WB, IHC
Primary Accession	P04264
Reactivity	Human, Mouse, Rat
Host	Rabbit
Clonality	Polyclonal
Calculated MW	66kDa KDa

KRT1 / CK1 / Cytokeratin 1 Antibody (Internal) - Additional Information

Gene ID 3848

Other Names

Keratin, type II cytoskeletal 1, 67 kDa cytokeratin, Cytokeratin-1, CK-1, Hair alpha protein, Keratin-1, K1, Type-II keratin Kb1, KRT1, KRTA

Reconstitution & Storage

Short term 4°C, long term aliquot and store at -20°C, avoid freeze thaw cycles.

Precautions

KRT1 / CK1 / Cytokeratin 1 Antibody (Internal) is for research use only and not for use in diagnostic or therapeutic procedures.

KRT1 / CK1 / Cytokeratin 1 Antibody (Internal) - Protein Information

Name KRT1

Synonyms KRTA

Function

May regulate the activity of kinases such as PKC and SRC via binding to integrin beta-1 (ITB1) and the receptor of activated protein C kinase 1 (RACK1). In complex with C1QBP is a high affinity receptor for kininogen-1/HMWK.

Cellular Location

Cell membrane. Cytoplasm

Tissue Location

The source of this protein is neonatal foreskin. The 67-kDa type II keratins are expressed in terminally differentiating epidermis

Volume

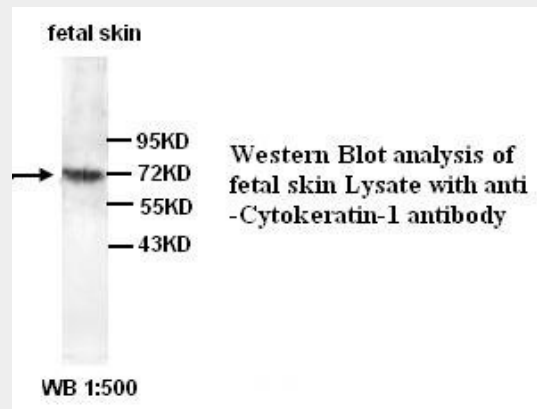
50 µl

KRT1 / CK1 / Cytokeratin 1 Antibody (Internal) - Protocols

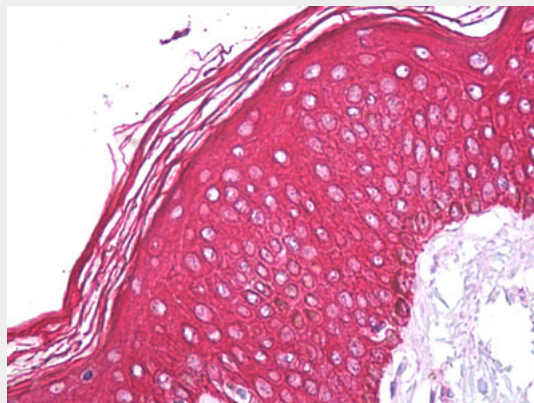
Provided below are standard protocols that you may find useful for product applications.

- [Western Blot](#)
- [Blocking Peptides](#)
- [Dot Blot](#)
- [Immunohistochemistry](#)
- [Immunofluorescence](#)
- [Immunoprecipitation](#)
- [Flow Cytometry](#)
- [Cell Culture](#)

KRT1 / CK1 / Cytokeratin 1 Antibody (Internal) - Images



0



Anti-Cytokeratin 1 / Keratin 1 antibody IHC of human skin.

KRT1 / CK1 / Cytokeratin 1 Antibody (Internal) - Background

May regulate the activity of kinases such as PKC and SRC via binding to integrin beta-1 (ITB1) and the receptor of activated protein kinase C (RACK1/GNB2L1). In complex with C1QBP is a high affinity receptor for kininogen-1/HMWK.

KRT1 / CK1 / Cytokeratin 1 Antibody (Internal) - References

Johnson L.D., et al. Proc. Natl. Acad. Sci. U.S.A. 82:1896-1900(1985).

Whittock N.V.,et al.Biochem. Biophys. Res. Commun. 274:149-152(2000).
Hatsell S.J.,et al.J. Invest. Dermatol. 116:606-609(2001).
Ota T.,et al.Nat. Genet. 36:40-45(2004).
Scherer S.E.,et al.Nature 440:346-351(2006).