

LHB / Luteinizing Hormone Antibody (clone LH01)
Mouse Monoclonal Antibody
Catalog # ALS15156**Specification**

LHB / Luteinizing Hormone Antibody (clone LH01) - Product Information

Application	IHC
Primary Accession	P01229
Reactivity	Human
Host	Mouse
Clonality	Monoclonal
Calculated MW	15kDa KDa

LHB / Luteinizing Hormone Antibody (clone LH01) - Additional Information**Gene ID** 3972**Other Names**

Lutropin subunit beta, Lutropin beta chain, Luteinizing hormone subunit beta, LH-B, LSH-B, LSH-beta, LHB

Reconstitution & Storage

Store at 4°C. Do not freeze.

Precautions

LHB / Luteinizing Hormone Antibody (clone LH01) is for research use only and not for use in diagnostic or therapeutic procedures.

LHB / Luteinizing Hormone Antibody (clone LH01) - Protein Information**Name** LHB**Function**

Promotes spermatogenesis and ovulation by stimulating the testes and ovaries to synthesize steroids.

Cellular Location

Secreted.

Tissue Location

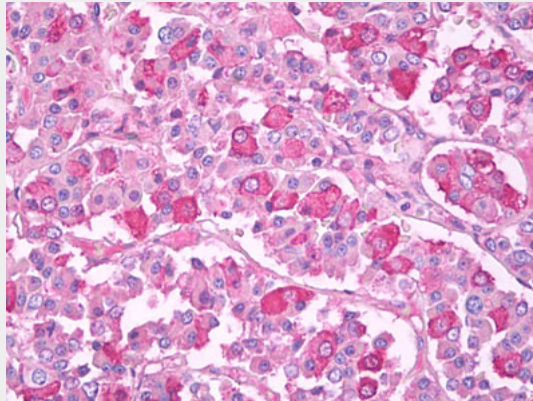
Pituitary gland.

LHB / Luteinizing Hormone Antibody (clone LH01) - Protocols

Provided below are standard protocols that you may find useful for product applications.

- [Western Blot](#)
- [Blocking Peptides](#)
- [Dot Blot](#)
- [Immunohistochemistry](#)
- [Immunofluorescence](#)
- [Immunoprecipitation](#)
- [Flow Cytometry](#)
- [Cell Culture](#)

LHB / Luteinizing Hormone Antibody (clone LH01) - Images



Anti-Luteinizing Hormone antibody IHC of human pituitary.

LHB / Luteinizing Hormone Antibody (clone LH01) - Background

Promotes spermatogenesis and ovulation by stimulating the testes and ovaries to synthesize steroids.

LHB / Luteinizing Hormone Antibody (clone LH01) - References

- Talmadge K., et al. *Nature* 307:37-40(1984).
Sairam M.R., et al. *Biochim. Biophys. Acta* 412:70-81(1975).
Shome B., et al. *J. Clin. Endocrinol. Metab.* 36:618-621(1973).
Birken S., et al. *Endocrinology* 133:985-989(1993).
Closset J., et al. *FEBS Lett.* 29:97-100(1973).