

**FSH Antibody (clone FSH03)**  
**Mouse Monoclonal Antibody**  
**Catalog # ALS15155**

**Specification**

---

**FSH Antibody (clone FSH03) - Product Information**

Application	<b>IHC</b>
Reactivity	<b>Human, Bovine</b>
Host	<b>Mouse</b>
Clonality	<b>Monoclonal</b>

**FSH Antibody (clone FSH03) - Additional Information**

**Reconstitution & Storage**

Store at 4°C. Do not freeze.

**Precautions**

FSH Antibody (clone FSH03) is for research use only and not for use in diagnostic or therapeutic procedures.

**FSH Antibody (clone FSH03) - Protein Information**

**Volume**

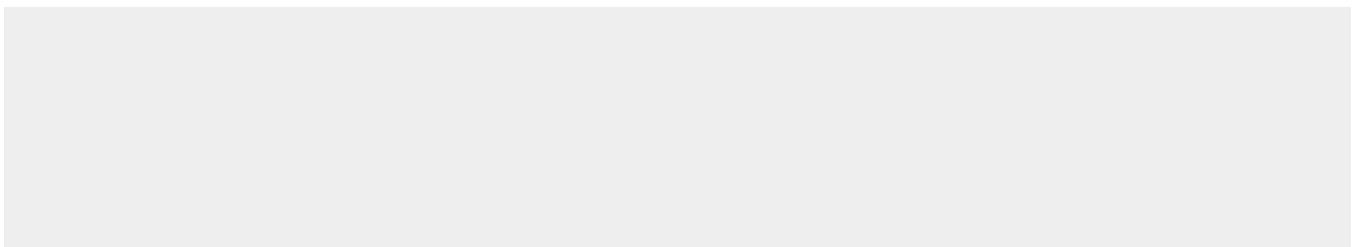
250 µl

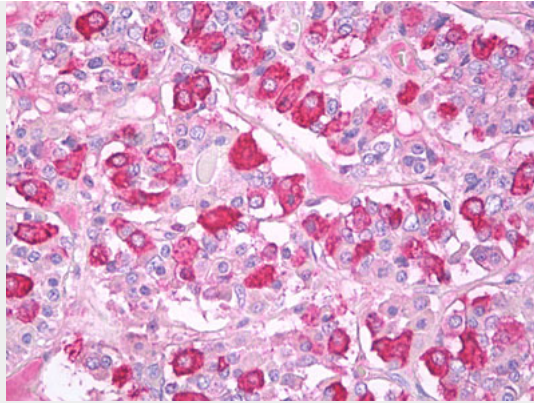
**FSH Antibody (clone FSH03) - Protocols**

Provided below are standard protocols that you may find useful for product applications.

- [Western Blot](#)
- [Blocking Peptides](#)
- [Dot Blot](#)
- [Immunohistochemistry](#)
- [Immunofluorescence](#)
- [Immunoprecipitation](#)
- [Flow Cytometry](#)
- [Cell Culture](#)

**FSH Antibody (clone FSH03) - Images**





Anti-FSH antibody IHC of human pituitary.