

B2M / Beta 2 Microglobulin Antibody (clone 3F9-2C2)
Mouse Monoclonal Antibody
Catalog # ALS15154

Specification

B2M / Beta 2 Microglobulin Antibody (clone 3F9-2C2) - Product Information

Application	WB, IF, IHC
Primary Accession	P61769
Reactivity	Human
Host	Mouse
Clonality	Monoclonal
Calculated MW	14kDa KDa

B2M / Beta 2 Microglobulin Antibody (clone 3F9-2C2) - Additional Information

Gene ID 567

Other Names

Beta-2-microglobulin, Beta-2-microglobulin form pl 5.3, B2M

Target/Specificity

Human Beta 2-Microglobulin

Reconstitution & Storage

Short term 4°C, long term aliquot and store at -20°C, avoid freeze thaw cycles.

Precautions

B2M / Beta 2 Microglobulin Antibody (clone 3F9-2C2) is for research use only and not for use in diagnostic or therapeutic procedures.

B2M / Beta 2 Microglobulin Antibody (clone 3F9-2C2) - Protein Information

Name B2M ([HGNC:914](#))

Function

Component of the class I major histocompatibility complex (MHC). Involved in the presentation of peptide antigens to the immune system. Exogenously applied M.tuberculosis EsxA or EsxA-EsxB (or EsxA expressed in host) binds B2M and decreases its export to the cell surface (total protein levels do not change), probably leading to defects in class I antigen presentation (PubMed:25356553).

Cellular Location

Secreted. Cell surface. Note=Detected in serum and urine (PubMed:1336137, PubMed:7554280). {ECO:0000269|PubMed:7554280, ECO:0000269|Ref.6}

Volume

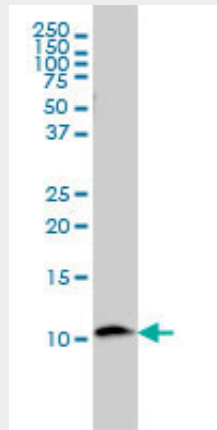
250 µl

B2M / Beta 2 Microglobulin Antibody (clone 3F9-2C2) - Protocols

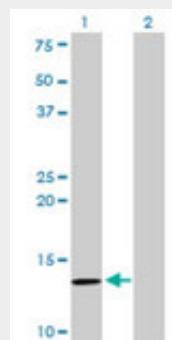
Provided below are standard protocols that you may find useful for product applications.

- [Western Blot](#)
- [Blocking Peptides](#)
- [Dot Blot](#)
- [Immunohistochemistry](#)
- [Immunofluorescence](#)
- [Immunoprecipitation](#)
- [Flow Cytometry](#)
- [Cell Culture](#)

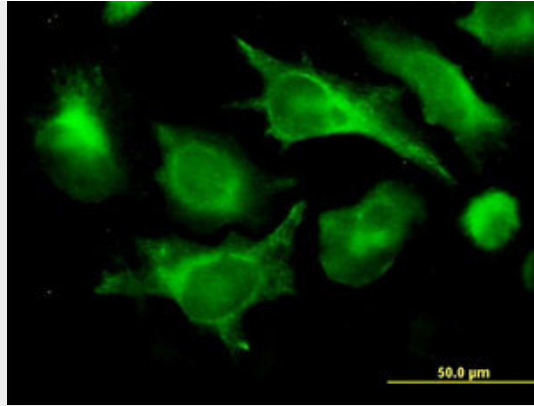
B2M / Beta 2 Microglobulin Antibody (clone 3F9-2C2) - Images



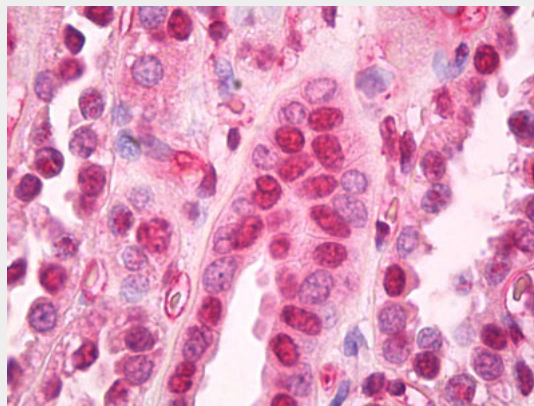
B2M monoclonal antibody, clone 3F9-2C2 Western blot of B2M expression in U-2 OS.



Western blot of B2M expression in transfected 293T cell line by B2M monoclonal antibody, clone...



Immunofluorescence of monoclonal antibody to B2M on HeLa cell. [antibody concentration 10 ug/ml]



Anti-B2M / Beta 2 Microglobulin antibody IHC of human kidney.

B2M / Beta 2 Microglobulin Antibody (clone 3F9-2C2) - Background

Component of the class I major histocompatibility complex (MHC). Involved in the presentation of peptide antigens to the immune system.

B2M / Beta 2 Microglobulin Antibody (clone 3F9-2C2) - References

- Guessow D.,et al.J. Immunol. 139:3132-3138(1987).
- He X.H.,et al.Sheng Wu Gong Cheng Xue Bao 20:99-103(2004).
- Matsumoto K.,et al.Submitted (DEC-1998) to the EMBL/GenBank/DDBJ databases.
- Tan J.,et al.Submitted (SEP-2005) to the EMBL/GenBank/DDBJ databases.
- Zhao Z.,et al.Submitted (JUN-1998) to the EMBL/GenBank/DDBJ databases.