

LMNA / Lamin A/C Antibody (aa181-230)
Rabbit Polyclonal Antibody
Catalog # ALS15146**Specification**

LMNA / Lamin A/C Antibody (aa181-230) - Product Information

Application	WB, IHC
Primary Accession	P02545
Reactivity	Human, Mouse, Rat
Host	Rabbit
Clonality	Polyclonal
Calculated MW	74kDa KDa

LMNA / Lamin A/C Antibody (aa181-230) - Additional Information**Gene ID** 4000**Other Names**

Prelamin-A/C, Lamin-A/C, 70 kDa lamin, Renal carcinoma antigen NY-REN-32, LMNA, LMN1

Target/Specificity

Lamin A (Cleaved-Asp230) Antibody detects endogenous levels of fragment of activated Lamin A resulting from cleavage adjacent to Asp230.

Reconstitution & Storage

Store at -20°C for up to one year.

Precautions

LMNA / Lamin A/C Antibody (aa181-230) is for research use only and not for use in diagnostic or therapeutic procedures.

LMNA / Lamin A/C Antibody (aa181-230) - Protein Information**Name** LMNA**Synonyms** LMN1**Function**

[Lamin-A/C]: Lamins are intermediate filament proteins that assemble into a filamentous meshwork, and which constitute the major components of the nuclear lamina, a fibrous layer on the nucleoplasmic side of the inner nuclear membrane (PubMed:[10080180](http://www.uniprot.org/citations/10080180), PubMed:[10580070](http://www.uniprot.org/citations/10580070), PubMed:[10587585](http://www.uniprot.org/citations/10587585), PubMed:[10814726](http://www.uniprot.org/citations/10814726), PubMed:[11799477](http://www.uniprot.org/citations/11799477), PubMed:[12075506](http://www.uniprot.org/citations/12075506), PubMed:[12927431](http://www.uniprot.org/citations/12927431)), PubMed:[10080180](http://www.uniprot.org/citations/10080180), PubMed:[10580070](http://www.uniprot.org/citations/10580070), PubMed:[10587585](http://www.uniprot.org/citations/10587585), PubMed:[10814726](http://www.uniprot.org/citations/10814726), PubMed:[11799477](http://www.uniprot.org/citations/11799477), PubMed:[12075506](http://www.uniprot.org/citations/12075506), PubMed:[12927431](http://www.uniprot.org/citations/12927431)).

href="http://www.uniprot.org/citations/10814726" target="_blank">10814726, PubMed:11799477, PubMed:18551513, PubMed:22431096). Required for osteoblastogenesis and bone formation (PubMed:12075506, PubMed:15317753, PubMed:18611980). Also prevents fat infiltration of muscle and bone marrow, helping to maintain the volume and strength of skeletal muscle and bone (PubMed:10587585). Required for cardiac homeostasis (PubMed:10580070, PubMed:12927431, PubMed:18611980, PubMed:23666920).

Cellular Location

Nucleus lamina. Nucleus envelope. Nucleus, nucleoplasm. Nucleus matrix. Note=Farnesylation of prelamin-A/C facilitates nuclear envelope targeting and subsequent cleavage by ZMPSTE24/FACE1 to remove the farnesyl group produces mature lamin-A/C, which can then be inserted into the nuclear lamina (PubMed:15317753) EMD is required for proper localization of non-farnesylated prelamin- A/C (PubMed:19323649). Also localizes to the micronuclear envelope in response to response to genome instability (PubMed:37788673)

Tissue Location

In the arteries, prelamin-A/C accumulation is not observed in young healthy vessels but is prevalent in medial vascular smooth muscle cells (VSMCs) from aged individuals and in atherosclerotic lesions, where it often colocalizes with senescent and degenerate VSMCs. Prelamin-A/C expression increases with age and disease. In normal aging, the accumulation of prelamin-A/C is caused in part by the down-regulation of ZMPSTE24/FACE1 in response to oxidative stress.

Volume

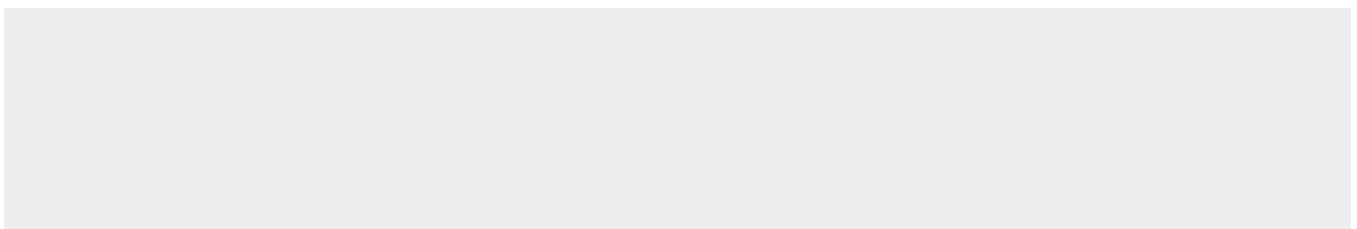
100 µl

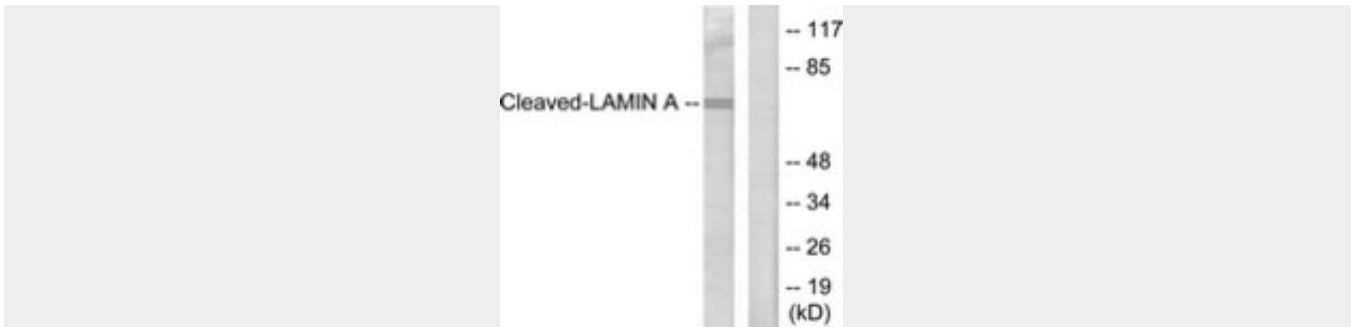
LMNA / Lamin A/C Antibody (aa181-230) - Protocols

Provided below are standard protocols that you may find useful for product applications.

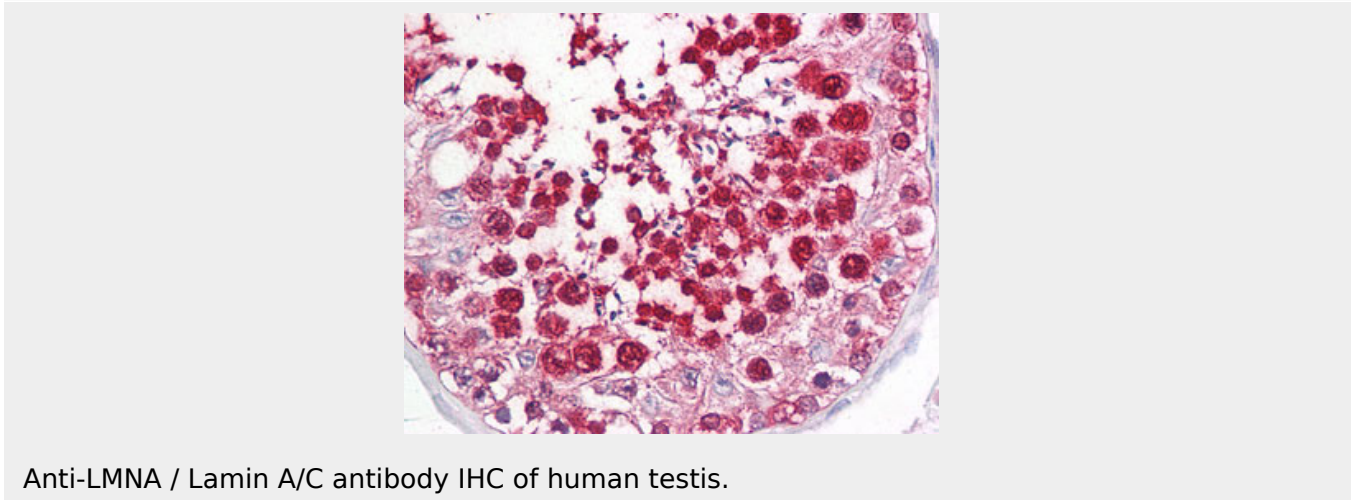
- [Western Blot](#)
- [Blocking Peptides](#)
- [Dot Blot](#)
- [Immunohistochemistry](#)
- [Immunofluorescence](#)
- [Immunoprecipitation](#)
- [Flow Cytometry](#)
- [Cell Culture](#)

LMNA / Lamin A/C Antibody (aa181-230) - Images





Western blot of extracts from HeLa cells, treated with Etoposide 25 μM 60', using Lamin A...



Anti-LMNA / Lamin A/C antibody IHC of human testis.

LMNA / Lamin A/C Antibody (aa181-230) - Background

Lamins are components of the nuclear lamina, a fibrous layer on the nucleoplasmic side of the inner nuclear membrane, which is thought to provide a framework for the nuclear envelope and may also interact with chromatin. Lamin A and C are present in equal amounts in the lamina of mammals. Plays an important role in nuclear assembly, chromatin organization, nuclear membrane and telomere dynamics. Required for normal development of peripheral nervous system and skeletal muscle and for muscle satellite cell proliferation. Required for osteoblastogenesis and bone formation. Also prevents fat infiltration of muscle and bone marrow, helping to maintain the volume and strength of skeletal muscle and bone.

LMNA / Lamin A/C Antibody (aa181-230) - References

- McKeon F.D., et al. *Nature* 319:463-468(1986).
- Fisher D.Z., et al. *Proc. Natl. Acad. Sci. U.S.A.* 83:6450-6454(1986).
- Sylvius N., et al. *J. Med. Genet.* 42:639-647(2005).
- Csoka A.B., et al. Submitted (JUL-2003) to the EMBL/GenBank/DDBJ databases.
- Ota T., et al. *Nat. Genet.* 36:40-45(2004).