

CASP9 / Caspase 9 Antibody (aa266-315)
Rabbit Polyclonal Antibody
Catalog # ALS15145**Specification**

CASP9 / Caspase 9 Antibody (aa266-315) - Product Information

Application	WB
Primary Accession	P55211
Reactivity	Human
Host	Rabbit
Clonality	Polyclonal
Calculated MW	46kDa KDa

CASP9 / Caspase 9 Antibody (aa266-315) - Additional Information**Gene ID** 842**Other Names**

Caspase-9, CASP-9, 3.4.22.62, Apoptotic protease Mch-6, Apoptotic protease-activating factor 3, APAF-3, ICE-like apoptotic protease 6, ICE-LAP6, Caspase-9 subunit p35, Caspase-9 subunit p10, CASP9, MCH6

Target/Specificity

Caspase 9 (Cleaved-Asp315) Antibody detects endogenous levels of fragment of activated Caspase 9 resulting from cleavage adjacent to Asp315.

Reconstitution & Storage

Store at -20°C for up to one year.

Precautions

CASP9 / Caspase 9 Antibody (aa266-315) is for research use only and not for use in diagnostic or therapeutic procedures.

CASP9 / Caspase 9 Antibody (aa266-315) - Protein Information**Name** CASP9**Synonyms** MCH6**Function**

Involved in the activation cascade of caspases responsible for apoptosis execution. Binding of caspase-9 to Apaf-1 leads to activation of the protease which then cleaves and activates effector caspases caspase-3 (CASP3) or caspase-7 (CASP7). Promotes DNA damage- induced apoptosis in a ABL1/c-Abl-dependent manner. Proteolytically cleaves poly(ADP-ribose) polymerase (PARP). Cleaves BIRC6 following inhibition of BIRC6-caspase binding by DIABLO/SMAC (PubMed:36758106, PubMed:36758105).

Tissue Location

Ubiquitous, with highest expression in the heart, moderate expression in liver, skeletal muscle, and pancreas. Low levels in all other tissues. Within the heart, specifically expressed in myocytes.

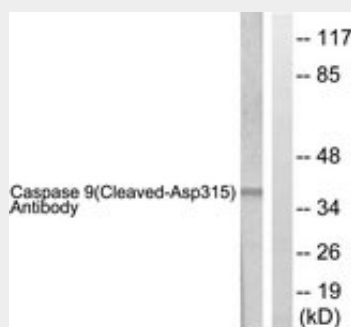
Volume

50 μ l

CASP9 / Caspase 9 Antibody (aa266-315) - Protocols

Provided below are standard protocols that you may find useful for product applications.

- [Western Blot](#)
- [Blocking Peptides](#)
- [Dot Blot](#)
- [Immunohistochemistry](#)
- [Immunofluorescence](#)
- [Immunoprecipitation](#)
- [Flow Cytometry](#)
- [Cell Culture](#)

CASP9 / Caspase 9 Antibody (aa266-315) - Images

Western blot of extracts from 293 cells, treated with Etoposide 25 μ M 60', using Caspase 9...

CASP9 / Caspase 9 Antibody (aa266-315) - Background

Involved in the activation cascade of caspases responsible for apoptosis execution. Binding of caspase-9 to Apaf-1 leads to activation of the protease which then cleaves and activates caspase-3. Promotes DNA damage-induced apoptosis in a ABL1/c-Abl-dependent manner. Proteolytically cleaves poly(ADP-ribose) polymerase (PARP).

CASP9 / Caspase 9 Antibody (aa266-315) - References

Duan H., et al. J. Biol. Chem. 271:16720-16724(1996).
Srinivasula S.M., et al. J. Biol. Chem. 271:27099-27106(1996).
Hadano S., et al. Mamm. Genome 10:757-760(1999).
Srinivasula S.M., et al. Cancer Res. 59:999-1002(1999).
Izawa M., et al. Submitted (JUN-1998) to the EMBL/GenBank/DDBJ databases.