

**TPH1 / TPH Antibody**  
**Sheep Polyclonal Antibody**  
**Catalog # ALS15128****Specification**

---

**TPH1 / TPH Antibody - Product Information**

Application	<b>WB, IHC</b>
Primary Accession	<a href="#">P17752</a>
Reactivity	<b>Human, Rat, Rabbit</b>
Host	<b>Sheep</b>
Clonality	<b>Polyclonal</b>
Calculated MW	<b>51kDa KDa</b>

**TPH1 / TPH Antibody - Additional Information****Gene ID** 7166**Other Names**

Tryptophan 5-hydroxylase 1, 1.14.16.4, Tryptophan 5-monoxygenase 1, TPH1, TPH, TPRH, TRPH

**Target/Specificity**

Specific for the ~55k tryptophan hydroxylase protein

**Reconstitution & Storage**

Long term: -20°C; Short term: +4°C; Avoid freeze-thaw cycles.

**Precautions**

TPH1 / TPH Antibody is for research use only and not for use in diagnostic or therapeutic procedures.

**TPH1 / TPH Antibody - Protein Information****Name** TPH1**Synonyms** TPH, TPRH, TRPH**Function**

Oxidizes L-tryptophan to 5-hydroxy-L-tryptophan in the rate-determining step of serotonin biosynthesis.

**Tissue Location**

[Isoform 2]: Seems to be less widely expressed than isoform 1.

**Volume**

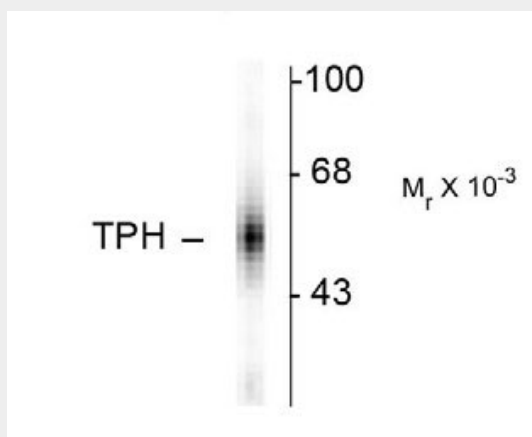
50 µl

## TPH1 / TPH Antibody - Protocols

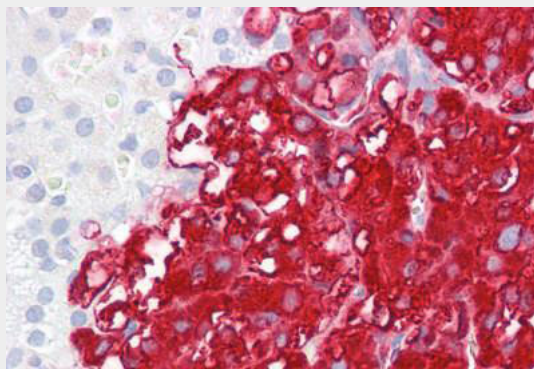
Provided below are standard protocols that you may find useful for product applications.

- [Western Blot](#)
- [Blocking Peptides](#)
- [Dot Blot](#)
- [Immunohistochemistry](#)
- [Immunofluorescence](#)
- [Immunoprecipitation](#)
- [Flow Cytometry](#)
- [Cell Culture](#)

## TPH1 / TPH Antibody - Images



Western blot of human dorsal Raphe nucleus showing specific immunolabeling of the ~55k...



Anti-TPH1 / TPH antibody IHC of adrenal.

## TPH1 / TPH Antibody - References

- Boulalard S., et al. *Nucleic Acids Res.* 18:4257-4257(1990).  
Tipper J.P., et al. *Arch. Biochem. Biophys.* 315:445-453(1994).  
Mural R.J., et al. Submitted (SEP-2005) to the EMBL/GenBank/DDBJ databases.  
Wang G.A., et al. *J. Neurochem.* 71:1769-1772(1998).  
Wang L., et al. *Biochemistry* 41:12569-12574(2002).