

SAE2 / UBA2 Antibody (aa591-640)
Rabbit Polyclonal Antibody
Catalog # ALS15087

Specification

SAE2 / UBA2 Antibody (aa591-640) - Product Information

Application	WB, IHC
Primary Accession	O9UBT2
Reactivity	Human
Host	Rabbit
Clonality	Polyclonal
Calculated MW	71kDa KDa

SAE2 / UBA2 Antibody (aa591-640) - Additional Information

Gene ID 10054

Other Names

SUMO-activating enzyme subunit 2, 6.3.2.-, Anthracycline-associated resistance ARX, Ubiquitin-like 1-activating enzyme E1B, Ubiquitin-like modifier-activating enzyme 2, UBA2, SAE2, UBLE1B

Target/Specificity

Uba2 Antibody detects endogenous levels of total Uba2 protein.

Reconstitution & Storage

Store at -20°C for up to one year.

Precautions

SAE2 / UBA2 Antibody (aa591-640) is for research use only and not for use in diagnostic or therapeutic procedures.

SAE2 / UBA2 Antibody (aa591-640) - Protein Information

Name UBA2

Synonyms SAE2, UBLE1B

Function

The heterodimer acts as an E1 ligase for SUMO1, SUMO2, SUMO3, and probably SUMO4. It mediates ATP-dependent activation of SUMO proteins followed by formation of a thioester bond between a SUMO protein and a conserved active site cysteine residue on UBA2/SAE2.

Cellular Location

Cytoplasm. Nucleus. Note=Shuttles between the cytoplasm and the nucleus, sumoylation is required either for nuclear translocation or nuclear retention

Volume

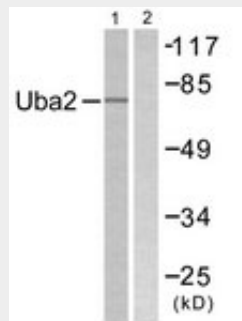
50 µl

SAE2 / UBA2 Antibody (aa591-640) - Protocols

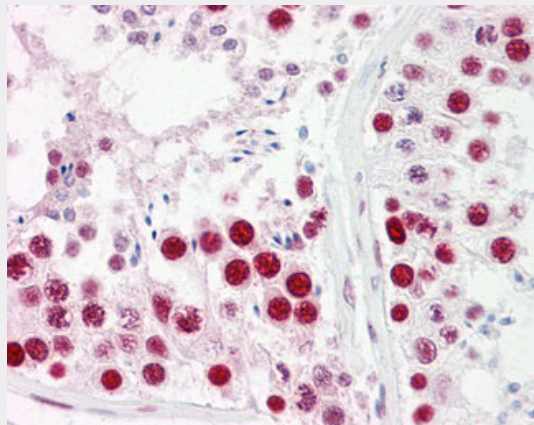
Provided below are standard protocols that you may find useful for product applications.

- [Western Blot](#)
- [Blocking Peptides](#)
- [Dot Blot](#)
- [Immunohistochemistry](#)
- [Immunofluorescence](#)
- [Immunoprecipitation](#)
- [Flow Cytometry](#)
- [Cell Culture](#)

SAE2 / UBA2 Antibody (aa591-640) - Images



Western blot of extracts from 293 cells, treated with UV 5', using Uba2 Antibody.



Anti-UBA2 antibody IHC of human testis.

SAE2 / UBA2 Antibody (aa591-640) - Background

The heterodimer acts as a E1 ligase for SUMO1, SUMO2, SUMO3, and probably SUMO4. It mediates ATP-dependent activation of SUMO proteins followed by formation of a thioester bond between a SUMO protein and a conserved active site cysteine residue on UBA2/SAE2.

SAE2 / UBA2 Antibody (aa591-640) - References

- Okuma T., et al. *Biochem. Biophys. Res. Commun.* 254:693-698(1999).
Gong L., et al. *FEBS Lett.* 448:185-189(1999).
Desterro J.M.P., et al. *J. Biol. Chem.* 274:10618-10624(1999).

Slapak C.,et al.Submitted (SEP-1995) to the EMBL/GenBank/DDBJ databases.
Wiemann S.,et al.Genome Res. 11:422-435(2001).