

SYP / Synaptophysin Antibody (aa101-150)
Rabbit Polyclonal Antibody
Catalog # ALS15067

Specification

SYP / Synaptophysin Antibody (aa101-150) - Product Information

Application	WB, IHC
Primary Accession	P08247
Reactivity	Human, Mouse, Rat
Host	Rabbit
Clonality	Polyclonal
Calculated MW	34kDa KDa

SYP / Synaptophysin Antibody (aa101-150) - Additional Information

Gene ID 6855

Other Names

Synaptophysin, Major synaptic vesicle protein p38, SYP

Target/Specificity

Synaptophysin Antibody detects endogenous levels of total Synaptophysin protein.

Reconstitution & Storage

Store at -20°C for up to one year.

Precautions

SYP / Synaptophysin Antibody (aa101-150) is for research use only and not for use in diagnostic or therapeutic procedures.

SYP / Synaptophysin Antibody (aa101-150) - Protein Information

Name SYP

Function

Possibly involved in structural functions as organizing other membrane components or in targeting the vesicles to the plasma membrane. Involved in the regulation of short-term and long-term synaptic plasticity (By similarity).

Cellular Location

Cytoplasmic vesicle, secretory vesicle, synaptic vesicle membrane; Multi-pass membrane protein. Synapse, synaptosome

Tissue Location

Expressed in the brain, with expression in the hippocampus, the neuropil in the dentate gyrus, where expression is higher in the outer half of the molecular layer than in the inner half, and in the neuropil of CA4 and CA3 (PubMed:8838578). Expressed in the putamen (at protein level) (PubMed:17296554)

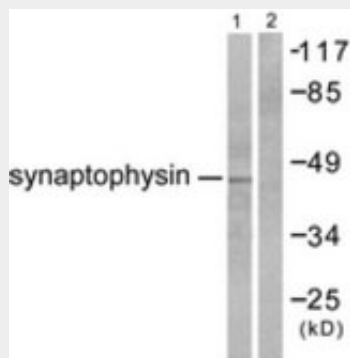
Volume
50 μ l

SYP / Synaptophysin Antibody (aa101-150) - Protocols

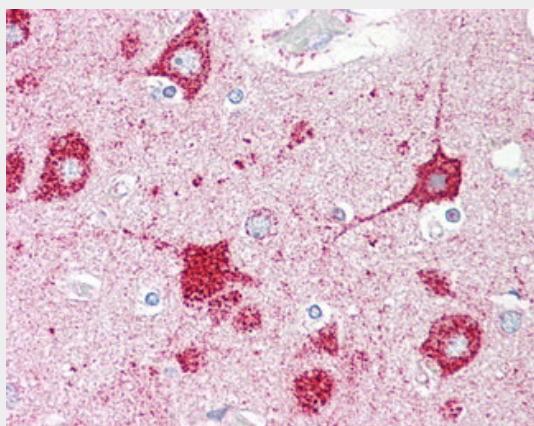
Provided below are standard protocols that you may find useful for product applications.

- [Western Blot](#)
- [Blocking Peptides](#)
- [Dot Blot](#)
- [Immunohistochemistry](#)
- [Immunofluorescence](#)
- [Immunoprecipitation](#)
- [Flow Cytometry](#)
- [Cell Culture](#)

SYP / Synaptophysin Antibody (aa101-150) - Images



Western blot of extracts from LOVO cells, using Synaptophysin Antibody.



Anti-SYP / Synaptophysin antibody IHC of human brain, cortex.

SYP / Synaptophysin Antibody (aa101-150) - Background

Possibly involved in structural functions as organizing other membrane components or in targeting the vesicles to the plasma membrane. Involved in the regulation of short-term and long-term synaptic plasticity (By similarity).

SYP / Synaptophysin Antibody (aa101-150) - References

Suedhof T.C.,et al.Nucleic Acids Res. 15:9607-9607(1987).
Oezcelik T.,et al.Am. J. Hum. Genet. 47:551-561(1990).
Fisher S.E.,et al.Genomics 45:340-347(1997).
Ota T.,et al.Nat. Genet. 36:40-45(2004).
Ross M.T.,et al.Nature 434:325-337(2005).