

**MAGEA1 / MAGE 1 Antibody (aa260-309)**  
**Rabbit Polyclonal Antibody**  
**Catalog # ALS15053****Specification**

---

**MAGEA1 / MAGE 1 Antibody (aa260-309) - Product Information**

Application	<b>WB, IHC</b>
Primary Accession	<a href="#">P43355</a>
Reactivity	<b>Human</b>
Host	<b>Rabbit</b>
Clonality	<b>Polyclonal</b>
Calculated MW	<b>34kDa KDa</b>

**MAGEA1 / MAGE 1 Antibody (aa260-309) - Additional Information****Gene ID** 4100**Other Names**

Melanoma-associated antigen 1, Antigen MZ2-E, Cancer/testis antigen 1.1, CT1.1, MAGE-1 antigen, MAGEA1, MAGE1, MAGE1A

**Target/Specificity**

MAGE-1 Antibody detects endogenous levels of total MAGE-1 protein.

**Reconstitution & Storage**

Store at -20°C for up to one year.

**Precautions**

MAGEA1 / MAGE 1 Antibody (aa260-309) is for research use only and not for use in diagnostic or therapeutic procedures.

**MAGEA1 / MAGE 1 Antibody (aa260-309) - Protein Information****Name** MAGEA1**Synonyms** MAGE1, MAGE1A**Function**

May be involved in transcriptional regulation through interaction with SNW1 and recruiting histone deactelyase HDAC1. May inhibit notch intracellular domain (NICD) transactivation. May play a role in embryonal development and tumor transformation or aspects of tumor progression. Antigen recognized on a melanoma by autologous cytolytic T-lymphocytes.

**Cellular Location**

Cytoplasm. Nucleus.

**Tissue Location**

Expressed in many tumors of several types, such as melanoma, head and neck squamous cell

carcinoma, lung carcinoma and breast carcinoma, but not in normal tissues except for testes.  
Never expressed in kidney tumors, leukemias and lymphomas

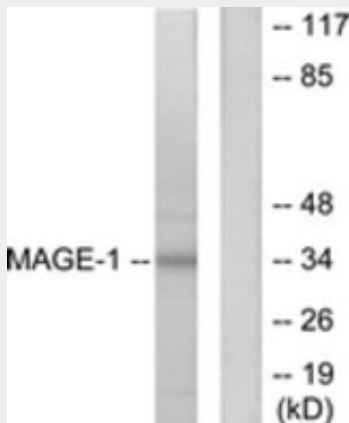
**Volume**  
50  $\mu$ l

### **MAGEA1 / MAGE 1 Antibody (aa260-309) - Protocols**

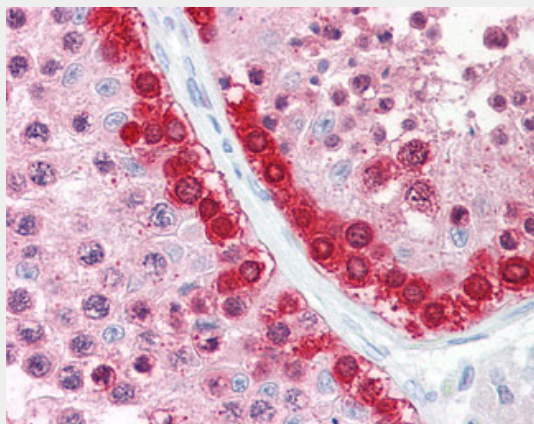
Provided below are standard protocols that you may find useful for product applications.

- [Western Blot](#)
- [Blocking Peptides](#)
- [Dot Blot](#)
- [Immunohistochemistry](#)
- [Immunofluorescence](#)
- [Immunoprecipitation](#)
- [Flow Cytometry](#)
- [Cell Culture](#)

### **MAGEA1 / MAGE 1 Antibody (aa260-309) - Images**



Western blot of extracts from HepG2 cells, using MAGE-1 Antibody.



Anti-MAGEA1 / MAGE 1 antibody IHC of human testis.

### **MAGEA1 / MAGE 1 Antibody (aa260-309) - Background**

May be involved in transcriptional regulation through interaction with SNW1 and recruiting histone deactelyase HDAC1. May inhibit notch intracellular domain (NICD) transactivation. May play a role in embryonal development and tumor transformation or aspects of tumor progression. Antigen recognized on a melanoma by autologous cytolytic T-lymphocytes.

#### **MAGEA1 / MAGE 1 Antibody (aa260-309) - References**

- van der Bruggen P.,et al.Science 254:1643-1647(1991).  
Ding M.,et al.Biochem. Biophys. Res. Commun. 202:549-555(1994).  
Wang L.P.,et al.Zhonghua Gan Zang Bing Za Zhi 12:151-155(2004).  
Kalnine N.,et al.Submitted (AUG-2003) to the EMBL/GenBank/DDBJ databases.  
Ota T.,et al.Nat. Genet. 36:40-45(2004).