

**KRT16 / CK16 / Cytokeratin 16 Antibody (aa421-470)**  
**Rabbit Polyclonal Antibody**  
**Catalog # ALS15051**

**Specification**

---

**KRT16 / CK16 / Cytokeratin 16 Antibody (aa421-470) - Product Information**

Application	WB, IHC
Primary Accession	<a href="#">P08779</a>
Reactivity	Human, Mouse, Rat
Host	Rabbit
Clonality	Polyclonal
Calculated MW	51kDa KDa

**KRT16 / CK16 / Cytokeratin 16 Antibody (aa421-470) - Additional Information**

**Gene ID** 3868

**Other Names**

Keratin, type I cytoskeletal 16, Cytokeratin-16, CK-16, Keratin-16, K16, KRT16, KRT16A

**Target/Specificity**

Keratin 16 Antibody detects endogenous levels of total Keratin 16 protein.

**Reconstitution & Storage**

Store at -20°C for up to one year.

**Precautions**

KRT16 / CK16 / Cytokeratin 16 Antibody (aa421-470) is for research use only and not for use in diagnostic or therapeutic procedures.

**KRT16 / CK16 / Cytokeratin 16 Antibody (aa421-470) - Protein Information**

**Name** KRT16

**Synonyms** KRT16A

**Function**

Epidermis-specific type I keratin that plays a key role in skin. Acts as a regulator of innate immunity in response to skin barrier breach: required for some inflammatory checkpoint for the skin barrier maintenance.

**Tissue Location**

Expressed in the corneal epithelium (at protein level).

**Volume**

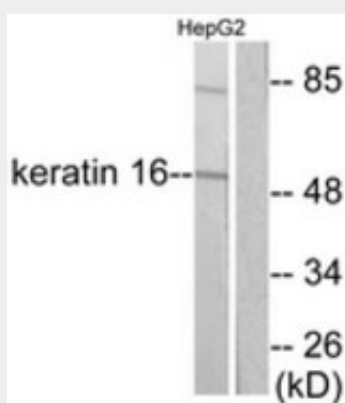
50 µl

## KRT16 / CK16 / Cytokeratin 16 Antibody (aa421-470) - Protocols

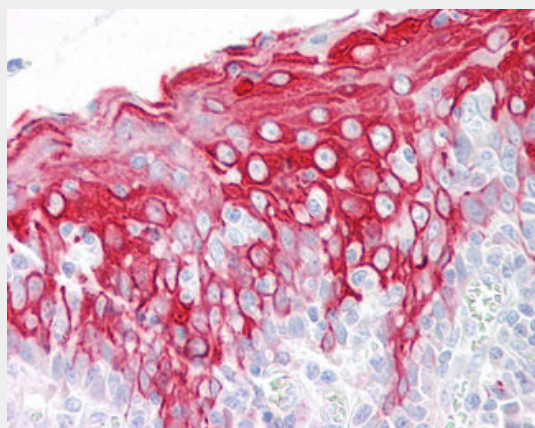
Provided below are standard protocols that you may find useful for product applications.

- [Western Blot](#)
- [Blocking Peptides](#)
- [Dot Blot](#)
- [Immunohistochemistry](#)
- [Immunofluorescence](#)
- [Immunoprecipitation](#)
- [Flow Cytometry](#)
- [Cell Culture](#)

## KRT16 / CK16 / Cytokeratin 16 Antibody (aa421-470) - Images



Western blot of extracts from HepG2 cells, using Keratin 16 Antibody.



Anti-KRT16 / Cytokeratin 16 antibody IHC of human tonsil.

## KRT16 / CK16 / Cytokeratin 16 Antibody (aa421-470) - Background

Epidermis-specific type I keratin that plays a key role in skin. Acts as a regulator of innate immunity in response to skin barrier breach: required for some inflammatory checkpoint for the skin barrier maintenance.

## KRT16 / CK16 / Cytokeratin 16 Antibody (aa421-470) - References

Raychaudhury A., et al. Mol. Cell. Biol. 6:539-548(1986).  
Rosenberg M., et al. Mol. Cell. Biol. 8:722-736(1988).

Paladini R.D.,et al.Biochem. Biophys. Res. Commun. 215:517-523(1995).  
Smith F.J.D.,et al.Submitted (APR-1998) to the EMBL/GenBank/DDBJ databases.  
Ota T.,et al.Nat. Genet. 36:40-45(2004).