

GZMB / Granzyme B Antibody (aa10-59)
Rabbit Polyclonal Antibody
Catalog # ALS15045**Specification****GZMB / Granzyme B Antibody (aa10-59) - Product Information**

Application	WB, IHC
Primary Accession	P10144
Reactivity	Human, Mouse, Rat
Host	Rabbit
Clonality	Polyclonal
Calculated MW	28kDa KDa

GZMB / Granzyme B Antibody (aa10-59) - Additional Information**Gene ID** 3002**Other Names**

Granzyme B, 3.4.21.79, C11, CTLA-1, Cathepsin G-like 1, CTSL1, Cytotoxic T-lymphocyte proteinase 2, Lymphocyte protease, Fragmentin-2, Granzyme-2, Human lymphocyte protein, HLP, SECT, T-cell serine protease 1-3E, GZMB, CGL1, CSPB, CTLA1, GRB

Target/Specificity

Granzyme B Antibody detects endogenous levels of total Granzyme B protein.

Reconstitution & Storage

Store at -20°C for up to one year.

Precautions

GZMB / Granzyme B Antibody (aa10-59) is for research use only and not for use in diagnostic or therapeutic procedures.

GZMB / Granzyme B Antibody (aa10-59) - Protein Information**Name** GZMB {ECO:0000303|PubMed:32188940, ECO:0000312|HGNC:HGNC:4709}**Function**

Abundant protease in the cytosolic granules of cytotoxic T- cells and NK-cells which activates caspase-independent pyroptosis when delivered into the target cell through the immunological synapse (PubMed: [1985927](http://www.uniprot.org/citations/1985927)), PubMed: [3262682](http://www.uniprot.org/citations/3262682)), PubMed: [3263427](http://www.uniprot.org/citations/3263427)). It cleaves after Asp (PubMed: [1985927](http://www.uniprot.org/citations/1985927)), PubMed: [8258716](http://www.uniprot.org/citations/8258716)). Once delivered into the target cell, acts by catalyzing cleavage of gasdermin-E (GSDME), releasing the pore-forming moiety of GSDME, thereby triggering pyroptosis and target cell death (PubMed: [31953257](http://www.uniprot.org/citations/31953257)), PubMed: [31953257](http://www.uniprot.org/citations/31953257)).

[32188940](http://www.uniprot.org/citations/32188940)). Seems to be linked to an activation cascade of caspases (aspartate-specific cysteine proteases) responsible for apoptosis execution. Cleaves caspase-3, -9 and -10 (CASP3, CASP9 and CASP10, respectively) to give rise to active enzymes mediating apoptosis (PubMed:[9852092](http://www.uniprot.org/citations/9852092)). Cleaves and activates CASP7 in response to bacterial infection, promoting plasma membrane repair (By similarity).

Cellular Location

Secreted. Cytolytic granule. Note=Delivered into the target cell by perforin (PubMed:20038786).

Volume

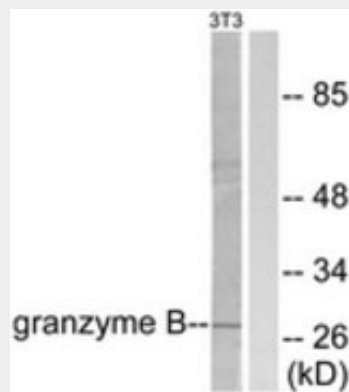
50 μ l

GZMB / Granzyme B Antibody (aa10-59) - Protocols

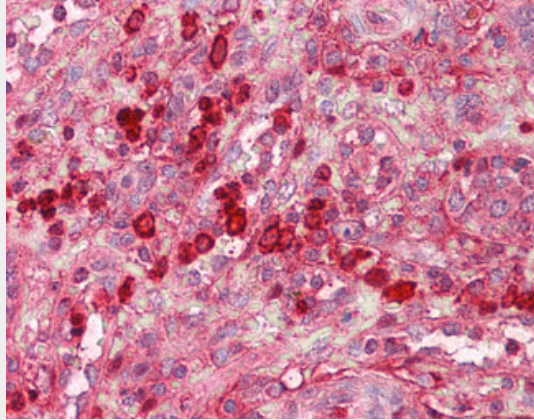
Provided below are standard protocols that you may find useful for product applications.

- [Western Blot](#)
- [Blocking Peptides](#)
- [Dot Blot](#)
- [Immunohistochemistry](#)
- [Immunofluorescence](#)
- [Immunoprecipitation](#)
- [Flow Cytometry](#)
- [Cell Culture](#)

GZMB / Granzyme B Antibody (aa10-59) - Images



Western blot of extracts from NIH-3T3 cells, using Granzyme B Antibody.



Anti-GZMB / Granzyme B antibody IHC of human spleen.

GZMB / Granzyme B Antibody (aa10-59) - Background

This enzyme is necessary for target cell lysis in cell-mediated immune responses. It cleaves after Asp. Seems to be linked to an activation cascade of caspases (aspartate-specific cysteine proteases) responsible for apoptosis execution. Cleaves caspase-3, -7, -9 and 10 to give rise to active enzymes mediating apoptosis.

GZMB / Granzyme B Antibody (aa10-59) - References

- Schmid J., et al. J. Immunol. 139:250-256(1987).
- Caputo A., et al. J. Biol. Chem. 263:6363-6369(1988).
- Trapani J.A., et al. Proc. Natl. Acad. Sci. U.S.A. 85:6924-6928(1988).
- Klein J.L., et al. Genomics 5:110-117(1989).
- Caputo A., et al. J. Immunol. 145:737-744(1990).