

**JUN / c-Jun Antibody (aa210-259)**  
**Rabbit Polyclonal Antibody**  
**Catalog # ALS15018**

**Specification**

---

**JUN / c-Jun Antibody (aa210-259) - Product Information**

Application	WB, IHC
Primary Accession	<a href="#">P05412</a>
Reactivity	Human, Mouse, Rat
Host	Rabbit
Clonality	Polyclonal
Calculated MW	36kDa KDa

**JUN / c-Jun Antibody (aa210-259) - Additional Information**

Gene ID 3725

**Other Names**

Transcription factor AP-1, Activator protein 1, AP1, Proto-oncogene c-Jun, V-jun avian sarcoma virus 17 oncogene homolog, p39, JUN

**Target/Specificity**

c-Jun Antibody detects endogenous levels of total c-Jun protein.

**Reconstitution & Storage**

Long term: -20°C; Short term: +4°C; Avoid freeze-thaw cycles.

**Precautions**

JUN / c-Jun Antibody (aa210-259) is for research use only and not for use in diagnostic or therapeutic procedures.

**JUN / c-Jun Antibody (aa210-259) - Protein Information**

Name JUN

**Function**

Transcription factor that recognizes and binds to the AP-1 consensus motif 5'-TGA[GC]TCA-3' (PubMed: [10995748](http://www.uniprot.org/citations/10995748)), PubMed: [22083952](http://www.uniprot.org/citations/22083952)). Heterodimerizes with proteins of the FOS family to form an AP-1 transcription complex, thereby enhancing its DNA binding activity to the AP-1 consensus sequence 5'-TGA[GC]TCA-3' and enhancing its transcriptional activity (By similarity). Together with FOSB, plays a role in activation-induced cell death of T cells by binding to the AP-1 promoter site of FASLG/CD95L, and inducing its transcription in response to activation of the TCR/CD3 signaling pathway (PubMed: [12618758](http://www.uniprot.org/citations/12618758)). Promotes activity of NR5A1 when phosphorylated by HIPK3 leading to increased steroidogenic gene expression upon cAMP signaling pathway stimulation (PubMed: [17210646](http://www.uniprot.org/citations/17210646)). Involved in

activated KRAS-mediated transcriptional activation of USP28 in colorectal cancer (CRC) cells (PubMed:<a href="http://www.uniprot.org/citations/24623306" target="\_blank">24623306</a>). Binds to the USP28 promoter in colorectal cancer (CRC) cells (PubMed:<a href="http://www.uniprot.org/citations/24623306" target="\_blank">24623306</a>).

#### Cellular Location

Nucleus.

#### Tissue Location

Expressed in the developing and adult prostate and prostate cancer cells.

#### Volume

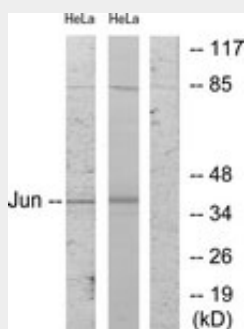
50  $\mu$ l

### JUN / c-Jun Antibody (aa210-259) - Protocols

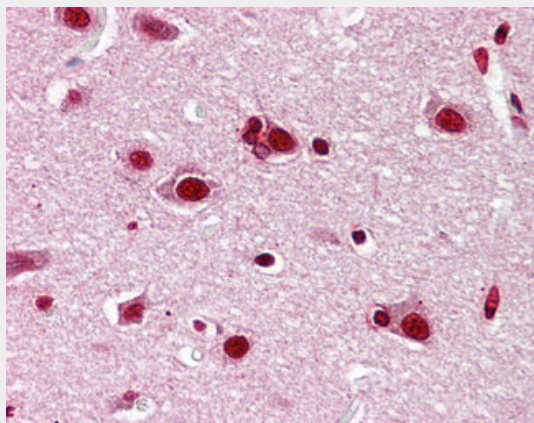
Provided below are standard protocols that you may find useful for product applications.

- [Western Blot](#)
- [Blocking Peptides](#)
- [Dot Blot](#)
- [Immunohistochemistry](#)
- [Immunofluorescence](#)
- [Immunoprecipitation](#)
- [Flow Cytometry](#)
- [Cell Culture](#)

### JUN / c-Jun Antibody (aa210-259) - Images



Western blot of extracts from HeLa cells, using c-Jun Antibody.



Anti-JUN antibody IHC of human brain, cortex.

### **JUN / c-Jun Antibody (aa210-259) - Background**

Transcription factor that recognizes and binds to the enhancer heptamer motif 5'-TGA[CG]TCA-3'. Promotes activity of NR5A1 when phosphorylated by HIPK3 leading to increased steroidogenic gene expression upon cAMP signaling pathway stimulation.

### **JUN / c-Jun Antibody (aa210-259) - References**

Hattori K., et al. Proc. Natl. Acad. Sci. U.S.A. 85:9148-9152(1988).  
Bohmann D., et al. Science 238:1386-1392(1987).  
Ebert L., et al. Submitted (JUN-2004) to the EMBL/GenBank/DDBJ databases.  
Kalnine N., et al. Submitted (OCT-2004) to the EMBL/GenBank/DDBJ databases.  
Gregory S.G., et al. Nature 441:315-321(2006).