

FLNA / Filamin A Antibody (aa2121-2170)
Rabbit Polyclonal Antibody
Catalog # ALS15008

Specification

FLNA / Filamin A Antibody (aa2121-2170) - Product Information

Application	WB, IHC
Primary Accession	P21333
Reactivity	Human, Mouse, Rat
Host	Rabbit
Clonality	Polyclonal
Calculated MW	281kDa KDa

FLNA / Filamin A Antibody (aa2121-2170) - Additional Information

Gene ID 2316

Other Names

Filamin-A, FLN-A, Actin-binding protein 280, ABP-280, Alpha-filamin, Endothelial actin-binding protein, Filamin-1, Non-muscle filamin, FLNA, FLN, FLN1

Target/Specificity

Filamin A Antibody detects endogenous levels of total Filamin A protein.

Reconstitution & Storage

Long term: -20°C; Short term: +4°C; Avoid freeze-thaw cycles.

Precautions

FLNA / Filamin A Antibody (aa2121-2170) is for research use only and not for use in diagnostic or therapeutic procedures.

FLNA / Filamin A Antibody (aa2121-2170) - Protein Information

Name FLNA

Synonyms FLN, FLN1

Function

Promotes orthogonal branching of actin filaments and links actin filaments to membrane glycoproteins. Anchors various transmembrane proteins to the actin cytoskeleton and serves as a scaffold for a wide range of cytoplasmic signaling proteins. Interaction with FLNB may allow neuroblast migration from the ventricular zone into the cortical plate. Tethers cell surface-localized furin, modulates its rate of internalization and directs its intracellular trafficking (By similarity). Involved in ciliogenesis. Plays a role in cell-cell contacts and adherens junctions during the development of blood vessels, heart and brain organs. Plays a role in platelets morphology through interaction with SYK that regulates ITAM- and ITAM-like-containing receptor signaling, resulting in by platelet cytoskeleton organization maintenance (By similarity). During the axon guidance process, required for growth cone collapse induced by SEMA3A-mediated stimulation of

neurons (PubMed: 25358863).

Cellular Location

Cytoplasm, cell cortex. Cytoplasm, cytoskeleton {ECO:0000250|UniProtKB:Q8BTM8}. Perikaryon {ECO:0000250|UniProtKB:Q8BTM8}. Cell projection, growth cone {ECO:0000250|UniProtKB:Q8BTM8}. Cell projection, podosome {ECO:0000250|UniProtKB:Q8BTM8}. Note=Colocalizes with CPMR1 in the central region of DRG neuron growth cone (By similarity). Following SEMA3A stimulation of DRG neurons, colocalizes with F-actin (By similarity). Localized to the core of myotube podosomes (By similarity). {ECO:0000250|UniProtKB:Q8BTM8}

Tissue Location

Ubiquitous.

Volume

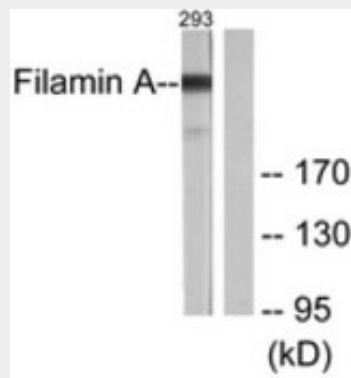
50 μ l

FLNA / Filamin A Antibody (aa2121-2170) - Protocols

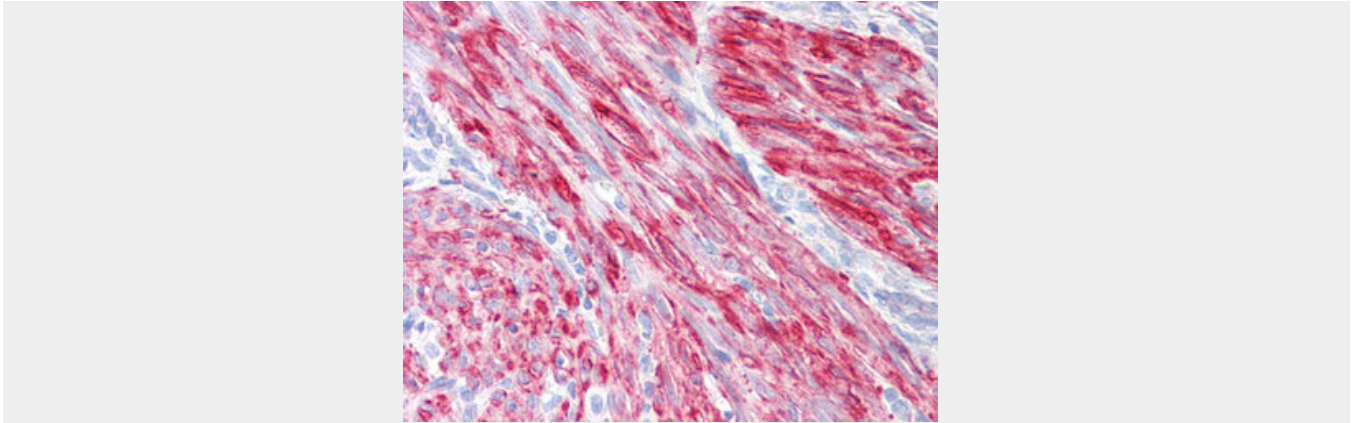
Provided below are standard protocols that you may find useful for product applications.

- [Western Blot](#)
- [Blocking Peptides](#)
- [Dot Blot](#)
- [Immunohistochemistry](#)
- [Immunofluorescence](#)
- [Immunoprecipitation](#)
- [Flow Cytometry](#)
- [Cell Culture](#)

FLNA / Filamin A Antibody (aa2121-2170) - Images



Western blot of extracts from 293 cells, treated with EGF 200 ng/ml 5', using Filamin Antibody.



Anti-FLNA / FMD antibody IHC of human uterus.

FLNA / Filamin A Antibody (aa2121-2170) - Background

Promotes orthogonal branching of actin filaments and links actin filaments to membrane glycoproteins. Anchors various transmembrane proteins to the actin cytoskeleton and serves as a scaffold for a wide range of cytoplasmic signaling proteins. Interaction with FLNA may allow neuroblast migration from the ventricular zone into the cortical plate. Tethers cell surface- localized furin, modulates its rate of internalization and directs its intracellular trafficking (By similarity). Involved in ciliogenesis.

FLNA / Filamin A Antibody (aa2121-2170) - References

- Gorlin J.B.,et al.J. Cell Biol. 111:1089-1105(1990).
- Patrosso M.C.,et al.Genomics 21:71-76(1994).
- Chen E.Y.,et al.Hum. Mol. Genet. 5:659-668(1996).
- Li J.,et al.Mol. Cell. Proteomics 9:2517-2528(2010).
- Ota T.,et al.Nat. Genet. 36:40-45(2004).