

**PLXNB1 / Plexin-B1 Antibody**  
**Rabbit Polyclonal Antibody**  
**Catalog # ALS15002****Specification**

---

**PLXNB1 / Plexin-B1 Antibody - Product Information**

Application	IHC
Primary Accession	<a href="#">O43157</a>
Reactivity	Human, Mouse
Host	Rabbit
Clonality	Polyclonal
Calculated MW	232kDa KDa

**PLXNB1 / Plexin-B1 Antibody - Additional Information**

**Gene ID** 5364

**Other Names**

Plexin-B1, Semaphorin receptor SEP, PLXNB1, KIAA0407, PLXN5, SEP

**Target/Specificity**

Plexin B1 antibody detects endogenous levels of Plexin B1 protein. Not tested with other proteins.

**Reconstitution & Storage**

For long term storage -20°C is recommended.

**Precautions**

PLXNB1 / Plexin-B1 Antibody is for research use only and not for use in diagnostic or therapeutic procedures.

**PLXNB1 / Plexin-B1 Antibody - Protein Information**

**Name** PLXNB1

**Synonyms** KIAA0407, PLXN5, SEP

**Function**

Receptor for SEMA4D (PubMed:[19843518](http://www.uniprot.org/citations/19843518), PubMed:[20877282](http://www.uniprot.org/citations/20877282), PubMed:[21912513](http://www.uniprot.org/citations/21912513)). Plays a role in GABAergic synapse development (By similarity). Mediates SEMA4A- and SEMA4D-dependent inhibitory synapse development (By similarity). Plays a role in RHOA activation and subsequent changes of the actin cytoskeleton (PubMed:[12196628](http://www.uniprot.org/citations/12196628), PubMed:[15210733](http://www.uniprot.org/citations/15210733)). Plays a role in axon guidance, invasive growth and cell migration (PubMed:[12198496](http://www.uniprot.org/citations/12198496)).

### Cellular Location

[Isoform 1]: Cell membrane; Single-pass type I membrane protein [Isoform 3]: Secreted

### Tissue Location

Highly expressed in fetal kidney, and at slightly lower levels in fetal brain, lung and liver

### Volume

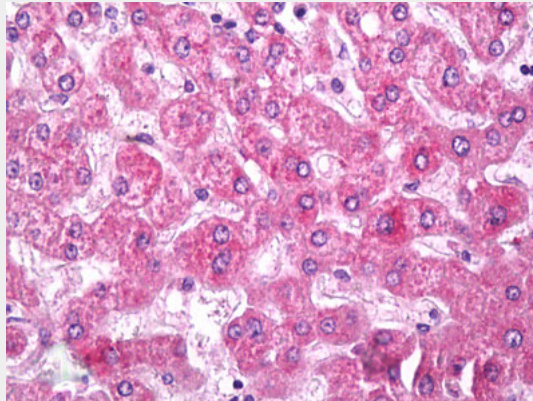
50  $\mu$ l

## PLXNB1 / Plexin-B1 Antibody - Protocols

Provided below are standard protocols that you may find useful for product applications.

- [Western Blot](#)
- [Blocking Peptides](#)
- [Dot Blot](#)
- [Immunohistochemistry](#)
- [Immunofluorescence](#)
- [Immunoprecipitation](#)
- [Flow Cytometry](#)
- [Cell Culture](#)

## PLXNB1 / Plexin-B1 Antibody - Images



Anti-PLXNB1 / Plexin B1 antibody IHC of human liver.

## PLXNB1 / Plexin-B1 Antibody - Background

Receptor for SEMA4D. Plays a role in RHOA activation and subsequent changes of the actin cytoskeleton. Plays a role in axon guidance, invasive growth and cell migration.

## PLXNB1 / Plexin-B1 Antibody - References

- Ishikawa K., et al. DNA Res. 4:307-313(1997).  
Tamagnone L., et al. Cell 99:71-80(1999).  
Tamagnone L., et al. Cell 104:321-321(2001).  
Maestrini E., et al. Proc. Natl. Acad. Sci. U.S.A. 93:674-678(1996).  
Mural R.J., et al. Submitted (JUL-2005) to the EMBL/GenBank/DDBJ databases.