

KRT18 / CK18 / Cytokeratin 18 Antibody
Rabbit Polyclonal Antibody
Catalog # ALS15001**Specification**

KRT18 / CK18 / Cytokeratin 18 Antibody - Product Information

Application	IF, WB, IHC
Primary Accession	P05783
Reactivity	Human
Host	Rabbit
Clonality	Polyclonal
Calculated MW	48kDa KDa

KRT18 / CK18 / Cytokeratin 18 Antibody - Additional Information**Gene ID** 3875**Other Names**

Keratin, type I cytoskeletal 18, Cell proliferation-inducing gene 46 protein, Cytokeratin-18, CK-18, Keratin-18, K18, KRT18, CYK18

Target/Specificity

Human Cytokeratin 18. Predicted cross-reactivity based on amino acid sequence homology: rat (85%).

Reconstitution & Storage

Short term 4°C, long term aliquot and store at -20°C, avoid freeze thaw cycles.

Precautions

KRT18 / CK18 / Cytokeratin 18 Antibody is for research use only and not for use in diagnostic or therapeutic procedures.

KRT18 / CK18 / Cytokeratin 18 Antibody - Protein Information**Name** KRT18**Synonyms** CYK18**Function**

Involved in the uptake of thrombin-antithrombin complexes by hepatic cells (By similarity). When phosphorylated, plays a role in filament reorganization. Involved in the delivery of mutated CFTR to the plasma membrane. Together with KRT8, is involved in interleukin-6 (IL-6)-mediated barrier protection.

Cellular Location

Nucleus matrix {ECO:0000250|UniProtKB:Q5BJY9}. Cytoplasm, perinuclear region. Nucleus, nucleolus. Cytoplasm {ECO:0000250|UniProtKB:Q5BJY9}

Tissue Location

Expressed in colon, placenta, liver and very weakly in exocervix. Increased expression observed in lymph nodes of breast carcinoma.

Volume

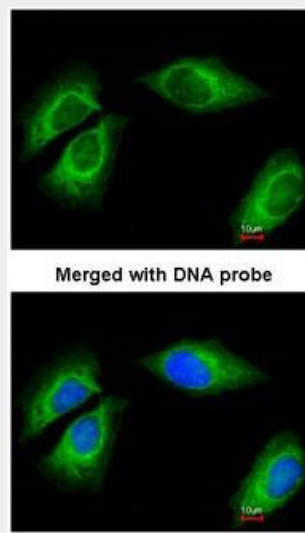
50 μ l

KRT18 / CK18 / Cytokeratin 18 Antibody - Protocols

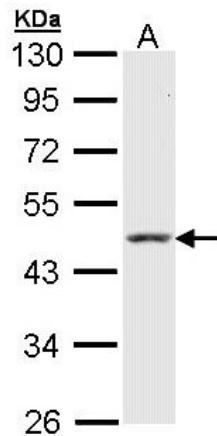
Provided below are standard protocols that you may find useful for product applications.

- [Western Blot](#)
- [Blocking Peptides](#)
- [Dot Blot](#)
- [Immunohistochemistry](#)
- [Immunofluorescence](#)
- [Immunoprecipitation](#)
- [Flow Cytometry](#)
- [Cell Culture](#)

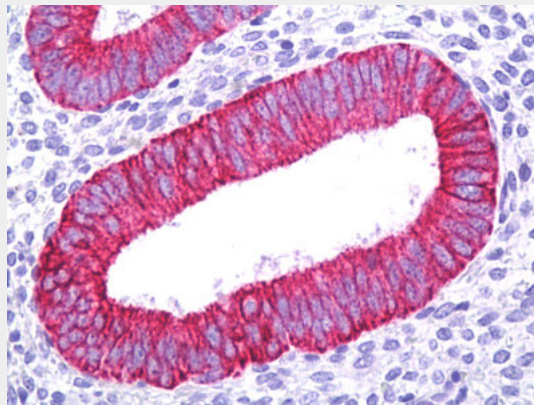
KRT18 / CK18 / Cytokeratin 18 Antibody - Images



Immunofluorescence of paraformaldehyde-fixed HeLa, using Cytokeratin 18 antibody at 1:200 dilution.



Sample (30 ug of whole cell lysate). A: Raji. 10% SDS PAGE. KRT18 antibody diluted at 1:10000.



Anti-KRT18 / Cytokeratin 18 antibody IHC of human uterus, endometrium.

KRT18 / CK18 / Cytokeratin 18 Antibody - Background

Involved in the uptake of thrombin-antithrombin complexes by hepatic cells (By similarity). When phosphorylated, plays a role in filament reorganization. Involved in the delivery of mutated CFTR to the plasma membrane. Together with KRT8, is involved in interleukin-6 (IL-6)-mediated barrier protection.

KRT18 / CK18 / Cytokeratin 18 Antibody - References

- Oshima R.G., et al. Differentiation 33:61-68(1986).
- Kim J.W., et al. Submitted (SEP-2004) to the EMBL/GenBank/DDBJ databases.
- Kalnine N., et al. Submitted (OCT-2004) to the EMBL/GenBank/DDBJ databases.
- Suzuki Y., et al. Submitted (APR-2005) to the EMBL/GenBank/DDBJ databases.
- Kulesh D.A., et al. Mol. Cell. Biol. 8:1540-1550(1988).