

**CR2 / CD21 Antibody (clone Bu32)**  
**Mouse Monoclonal Antibody**  
**Catalog # ALS14927****Specification**

---

**CR2 / CD21 Antibody (clone Bu32) - Product Information**

Application	IHC
Primary Accession	<a href="#">P20023</a>
Reactivity	Human
Host	Mouse
Clonality	Monoclonal
Calculated MW	113kDa KDa

**CR2 / CD21 Antibody (clone Bu32) - Additional Information****Gene ID** 1380**Other Names**

Complement receptor type 2, Cr2, Complement C3d receptor, Epstein-Barr virus receptor, EBV receptor, CD21, CR2, C3DR

**Target/Specificity**

Recognizes human CD21, a 145kD cell surface glycoprotein expressed by mature B lymphocytes, follicular dendritic cells, subsets of normal thymocytes and subsets of T cells. The CD21 molecule acts as a receptor for complement components C3d, C3dg and ...

**Reconstitution & Storage**

Short term 4°C, long term aliquot and store at -20°C, avoid freeze thaw cycles.

**Precautions**

CR2 / CD21 Antibody (clone Bu32) is for research use only and not for use in diagnostic or therapeutic procedures.

**CR2 / CD21 Antibody (clone Bu32) - Protein Information****Name** CR2**Synonyms** C3DR**Function**Receptor for complement C3, for the Epstein-Barr virus on human B-cells and T-cells and for HNRNPU (PubMed:[7753047](http://www.uniprot.org/citations/7753047)). Participates in B lymphocytes activation (PubMed:[7753047](http://www.uniprot.org/citations/7753047)).**Cellular Location**

Cell membrane; Single-pass type I membrane protein

### Tissue Location

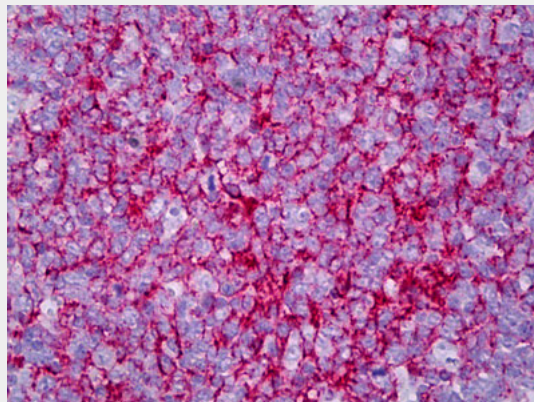
Mature B-lymphocytes, T-lymphocytes, pharyngeal epithelial cells, astrocytes and follicular dendritic cells of the spleen

### CR2 / CD21 Antibody (clone Bu32) - Protocols

Provided below are standard protocols that you may find useful for product applications.

- [Western Blot](#)
- [Blocking Peptides](#)
- [Dot Blot](#)
- [Immunohistochemistry](#)
- [Immunofluorescence](#)
- [Immunoprecipitation](#)
- [Flow Cytometry](#)
- [Cell Culture](#)

### CR2 / CD21 Antibody (clone Bu32) - Images



Anti-CR2 / CD21 antibody IHC of human tonsil, germinal center.

### CR2 / CD21 Antibody (clone Bu32) - Background

Receptor for complement C3Dd, for the Epstein-Barr virus on human B-cells and T-cells and for HNRPU. Participates in B lymphocytes activation.

### CR2 / CD21 Antibody (clone Bu32) - References

- Fujisaku A., et al. J. Biol. Chem. 264:2118-2125(1989).  
Weis J.J., et al. J. Exp. Med. 167:1047-1066(1988).  
Moore M., et al. Proc. Natl. Acad. Sci. U.S.A. 84:9194-9198(1987).  
Barel M., et al. Mol. Immunol. 35:1025-1031(1998).  
Ota T., et al. Nat. Genet. 36:40-45(2004).