

CEACAM5 / CD66e Antibody (clone CB30)
Mouse Monoclonal Antibody
Catalog # ALS14924**Specification**

CEACAM5 / CD66e Antibody (clone CB30) - Product Information

Application	IHC
Primary Accession	P06731
Reactivity	Human
Host	Mouse
Clonality	Monoclonal
Calculated MW	77kDa KDa

CEACAM5 / CD66e Antibody (clone CB30) - Additional Information**Gene ID** 1048**Other Names**

Carcinoembryonic antigen-related cell adhesion molecule 5, Carcinoembryonic antigen, CEA, Meconium antigen 100, CD66e, CEACAM5, CEA

Target/Specificity

Recognizes human CD66e, also known as carcinoembryonic antigen (CEA). CD66e is a member of the immunoglobulin supergene family that is mainly expressed on epithelial cells. CD66e may play a role in cancer cells metastasis, and has been used clinicall ...

Reconstitution & Storage

Short term 4°C, long term aliquot and store at -20°C, avoid freeze thaw cycles.

Precautions

CEACAM5 / CD66e Antibody (clone CB30) is for research use only and not for use in diagnostic or therapeutic procedures.

CEACAM5 / CD66e Antibody (clone CB30) - Protein Information**Name** CEACAM5 ([HGNC:1817](#))**Function**

Cell surface glycoprotein that plays a role in cell adhesion, intracellular signaling and tumor progression (PubMed: [10864933](http://www.uniprot.org/citations/10864933)), PubMed: [10910050](http://www.uniprot.org/citations/10910050)), PubMed: [2803308](http://www.uniprot.org/citations/2803308)). Mediates homophilic and heterophilic cell adhesion with other carcinoembryonic antigen-related cell adhesion molecules, such as CEACAM6 (PubMed: [2803308](http://www.uniprot.org/citations/2803308)). Plays a role as an oncogene by promoting tumor progression; induces resistance to anoikis of colorectal carcinoma cells (PubMed: [10910050](http://www.uniprot.org/citations/10910050)).

Cellular Location

Cell membrane; Lipid-anchor, GPI-anchor. Apical cell membrane. Cell surface Note=Localized to the apical glycocalyx surface

Tissue Location

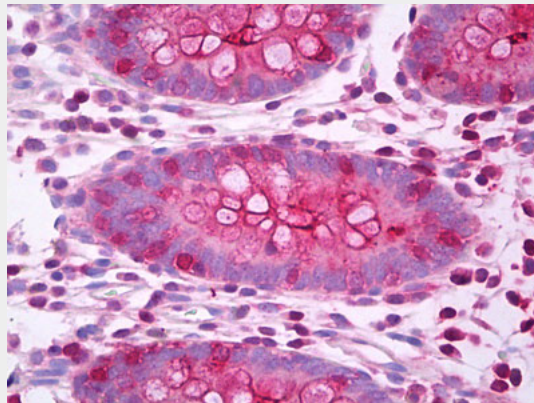
Expressed in columnar epithelial and goblet cells of the colon (at protein level) (PubMed:10436421). Found in adenocarcinomas of endodermally derived digestive system epithelium and fetal colon.

CEACAM5 / CD66e Antibody (clone CB30) - Protocols

Provided below are standard protocols that you may find useful for product applications.

- [Western Blot](#)
- [Blocking Peptides](#)
- [Dot Blot](#)
- [Immunohistochemistry](#)
- [Immunofluorescence](#)
- [Immunoprecipitation](#)
- [Flow Cytometry](#)
- [Cell Culture](#)

CEACAM5 / CD66e Antibody (clone CB30) - Images



Anti-CEA antibody IHC of human colon.

CEACAM5 / CD66e Antibody (clone CB30) - Background

Cell surface glycoprotein that plays a role in cell adhesion and in intracellular signaling. Receptor for E.coli Dr adhesins.

CEACAM5 / CD66e Antibody (clone CB30) - References

- Beauchemin N.,et al.Mol. Cell. Biol. 7:3221-3230(1987).
Barnett T.,et al.Genomics 3:59-66(1988).
Schrewe H.,et al.Mol. Cell. Biol. 10:2738-2748(1990).
Grimwood J.,et al.Nature 428:529-535(2004).
Oikawa S.,et al.Biochem. Biophys. Res. Commun. 142:511-518(1987).