

**GPR34 Antibody (aa181-230)**  
**Rabbit Polyclonal Antibody**  
**Catalog # ALS14915****Specification**

---

**GPR34 Antibody (aa181-230) - Product Information**

Application	IF, WB
Primary Accession	<a href="#">O9UPC5</a>
Reactivity	Human, Mouse, Rat
Host	Rabbit
Clonality	Polyclonal
Calculated MW	44kDa KDa

**GPR34 Antibody (aa181-230) - Additional Information****Gene ID** 2857**Other Names**

Probable G-protein coupled receptor 34, GPR34

**Target/Specificity**

GPR34 Antibody detects endogenous levels of total GPR34 protein.

**Reconstitution & Storage**

Short term 4°C, long term aliquot and store at -20°C, avoid freeze thaw cycles.

**Precautions**

GPR34 Antibody (aa181-230) is for research use only and not for use in diagnostic or therapeutic procedures.

**GPR34 Antibody (aa181-230) - Protein Information****Name** GPR34**Function**

G-protein-coupled receptor of lysophosphatidylserine (LysoPS) that plays different roles in immune response (PubMed: <http://www.uniprot.org/citations/16460680> target="\_blank">16460680</a>). Acts a damage-sensing receptor that triggers tissue repair upon recognition of dying neutrophils (By similarity). Mechanistically, apoptotic neutrophils release lysophosphatidylserine that are recognized by type 3 innate lymphoid cells (ILC3s) via GPR34, which activates downstream PI3K-AKT and RAS-ERK signaling pathways leading to STAT3 activation and IL-22 production (By similarity). Plays an important role in microglial function, controlling morphology and phagocytosis (By similarity).

**Cellular Location**

Cell membrane; Multi-pass membrane protein

**Tissue Location**

Broadly expressed. Highly expressed on mast cells (PubMed:16460680).

**Volume**

50  $\mu$ l

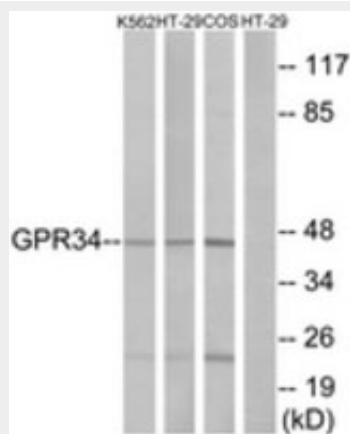
**GPR34 Antibody (aa181-230) - Protocols**

Provided below are standard protocols that you may find useful for product applications.

- [Western Blot](#)
- [Blocking Peptides](#)
- [Dot Blot](#)
- [Immunohistochemistry](#)
- [Immunofluorescence](#)
- [Immunoprecipitation](#)
- [Flow Cytometry](#)
- [Cell Culture](#)

**GPR34 Antibody (aa181-230) - Images**

Immunofluorescence of LOVO cells, using GPR34 Antibody.



Western blot of extracts from HT-29/K562/COS7 cells, using GPR34 Antibody.

**GPR34 Antibody (aa181-230) - Background**

Orphan receptor.

**GPR34 Antibody (aa181-230) - References**

- Schoneberg T., et al. *Biochim. Biophys. Acta* 1446:57-70(1999).  
Marchese A., et al. *Genomics* 56:12-21(1999).  
Jacobi F.K., et al. *Hum. Genet.* 107:89-91(2000).  
Ota T., et al. *Nat. Genet.* 36:40-45(2004).