

REG3A Antibody (aa1-50)
Rabbit Polyclonal Antibody
Catalog # ALS14905**Specification**

REG3A Antibody (aa1-50) - Product Information

Application	IHC
Primary Accession	Q06141
Reactivity	Human
Host	Rabbit
Clonality	Polyclonal
Calculated MW	19kDa KDa

REG3A Antibody (aa1-50) - Additional Information**Gene ID** 5068**Other Names**

Regenerating islet-derived protein 3-alpha, REG-3-alpha, Hepatointestinal pancreatic protein, HIP/PAP, Human proislet peptide, Pancreatitis-associated protein 1, Regenerating islet-derived protein III-alpha, Reg III-alpha, Regenerating islet-derived protein 3-alpha 16.5 kDa form, Regenerating islet-derived protein 3-alpha 15 kDa form, REG3A, HIP, PAP, PAP1

Target/Specificity

Human REG3A

Reconstitution & Storage

Store at 4°C, stable for 6 months. For long term storage, aliquot and store at -20°C.

Precautions

REG3A Antibody (aa1-50) is for research use only and not for use in diagnostic or therapeutic procedures.

REG3A Antibody (aa1-50) - Protein Information**Name** REG3A ([HGNC:8601](#))**Function**

[Regenerating islet-derived protein 3-alpha 15 kDa form]: Bactericidal C-type lectin which acts exclusively against Gram-positive bacteria and mediates bacterial killing by binding to surface-exposed carbohydrate moieties of peptidoglycan (PubMed: [16931762](http://www.uniprot.org/citations/16931762)). Binds membrane phospholipids and kills bacteria by forming a hexameric membrane-permeabilizing oligomeric pore (PubMed: [24256734](http://www.uniprot.org/citations/24256734)).

Cellular Location

Secreted. Note=Found in the apical region of pancreatic acinar cells

Tissue Location

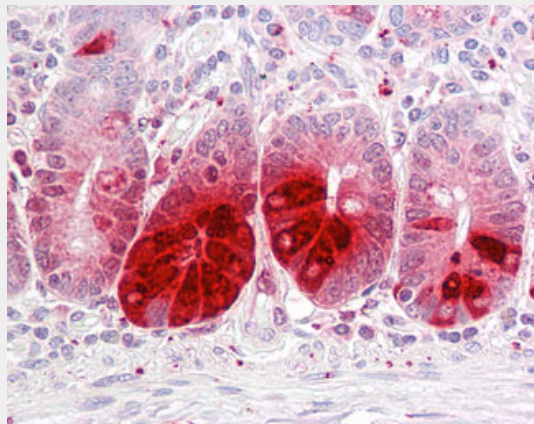
Expressed by keratinocytes (PubMed:27830702). Highly expressed in epidermal keratinocytes of psoriasis patients (at protein level) (PubMed:22727489). Constitutively expressed in intestine. Low expression is found in healthy pancreas. Overexpressed during the acute phase of pancreatitis and in some patients with chronic pancreatitis (PubMed:1469087).

REG3A Antibody (aa1-50) - Protocols

Provided below are standard protocols that you may find useful for product applications.

- [Western Blot](#)
- [Blocking Peptides](#)
- [Dot Blot](#)
- [Immunohistochemistry](#)
- [Immunofluorescence](#)
- [Immunoprecipitation](#)
- [Flow Cytometry](#)
- [Cell Culture](#)

REG3A Antibody (aa1-50) - Images



Anti-REG3A antibody IHC of human small intestine.

REG3A Antibody (aa1-50) - Background

Bactericidal C-type lectin which acts exclusively against Gram-positive bacteria and mediates bacterial killing by binding to surface-exposed carbohydrate moieties of peptidoglycan. Regulates keratinocyte proliferation and differentiation after skin injury via activation of EXTL3-PI3K-AKT signaling pathway.

REG3A Antibody (aa1-50) - References

- Itoh T., et al. *Biochim. Biophys. Acta* 1172:184-186(1993).
Orelle B., et al. *J. Clin. Invest.* 90:2284-2291(1992).
Lasserre C., et al. *Cancer Res.* 52:5089-5095(1992).
Duseti N.J., et al. *Genomics* 19:108-114(1994).
Lasserre C., et al. *Eur. J. Biochem.* 224:29-38(1994).