

ATP1B1 Antibody (Internal)
Goat Polyclonal Antibody
Catalog # ALS14897**Specification**

ATP1B1 Antibody (Internal) - Product Information

Application	WB, IHC
Primary Accession	P05026
Reactivity	Human, Mouse, Rat, Hamster, Horse, Dog
Host	Goat
Clonality	Polyclonal
Calculated MW	35kDa KDa

ATP1B1 Antibody (Internal) - Additional Information**Gene ID** 481**Other Names**

Sodium/potassium-transporting ATPase subunit beta-1, Sodium/potassium-dependent ATPase subunit beta-1, ATP1B1, ATP1B

Target/Specificity

Human ATP1B1. This antibody is expected to recognize both reported isoforms (NP_001668.1; NP_001001787.1).

Reconstitution & Storage

Short term 4°C, long term aliquot and store at -20°C, avoid freeze thaw cycles.

Precautions

ATP1B1 Antibody (Internal) is for research use only and not for use in diagnostic or therapeutic procedures.

ATP1B1 Antibody (Internal) - Protein Information**Name** ATP1B1**Synonyms** ATP1B**Function**

This is the non-catalytic component of the active enzyme, which catalyzes the hydrolysis of ATP coupled with the exchange of Na(+) and K(+) ions across the plasma membrane. The beta subunit regulates, through assembly of alpha/beta heterodimers, the number of sodium pumps transported to the plasma membrane (PubMed:[19694409](http://www.uniprot.org/citations/19694409)). Plays a role in innate immunity by enhancing virus-triggered induction of interferons (IFNs) and interferon stimulated genes (ISGs). Mechanistically, enhances the ubiquitination of TRAF3 and TRAF6 as well as the phosphorylation of TAK1 and TBK1 (PubMed:[34011520](http://www.uniprot.org/citations/34011520)).

Cellular Location

Cell membrane; Single-pass type II membrane protein. Apical cell membrane {ECO:0000250|UniProtKB:P07340}; Single-pass type II membrane protein. Cell membrane, sarcolemma {ECO:0000250|UniProtKB:P14094}. Note=Colocalizes with OBSCN at the intercalated disk and sarcolemma in cardiomyocytes. Localizes in long striations at the level of Z and M lines {ECO:0000250|UniProtKB:P14094}

Tissue Location

Found in most tissues.

ATP1B1 Antibody (Internal) - Protocols

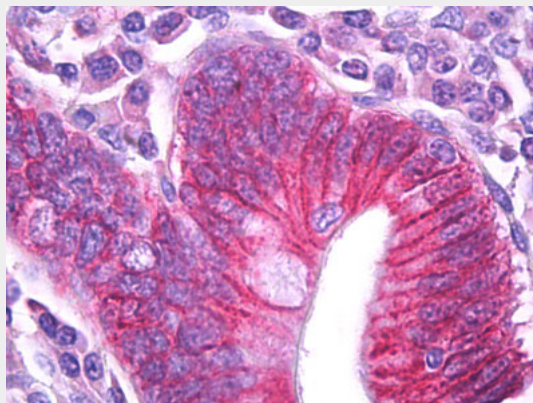
Provided below are standard protocols that you may find useful for product applications.

- [Western Blot](#)
- [Blocking Peptides](#)
- [Dot Blot](#)
- [Immunohistochemistry](#)
- [Immunofluorescence](#)
- [Immunoprecipitation](#)
- [Flow Cytometry](#)
- [Cell Culture](#)

ATP1B1 Antibody (Internal) - Images



ATP1B1 antibody (0.1 ug/ml) staining of Rat Retina lysate (35 ug protein/ml in RIPA buffer).



Anti-ATP1B1 antibody IHC of human small intestine.

ATP1B1 Antibody (Internal) - Background

This is the non-catalytic component of the active enzyme, which catalyzes the hydrolysis of ATP coupled with the exchange of Na(+) and K(+) ions across the plasma membrane. The beta subunit regulates, through assembly of alpha/beta heterodimers, the number of sodium pumps transported to the plasma membrane.

ATP1B1 Antibody (Internal) - References

- Kawakami K., et al. Nucleic Acids Res. 14:2833-2844(1986).
Lane L.K., et al. Genomics 5:445-453(1989).
Ruiz A., et al. Gene 155:179-184(1995).
Kalnine N., et al. Submitted (AUG-2003) to the EMBL/GenBank/DDBJ databases.
Gregory S.G., et al. Nature 441:315-321(2006).