

HFE2 / Hemojuvelin Antibody (clone 1C12)
Mouse Monoclonal Antibody
Catalog # ALS14895**Specification**

HFE2 / Hemojuvelin Antibody (clone 1C12) - Product Information

Application	IHC
Primary Accession	Q6ZVN8
Reactivity	Human
Host	Mouse
Clonality	Monoclonal
Calculated MW	45kDa kDa

HFE2 / Hemojuvelin Antibody (clone 1C12) - Additional Information**Gene ID** 148738**Other Names**

Hemojuvelin, Hemochromatosis type 2 protein, RGM domain family member C, HFE2, HJV, RGMC

Target/Specificity

Human HFE2

Reconstitution & Storage

Short term 4°C, long term aliquot and store at -20°C, avoid freeze thaw cycles.

Precautions

HFE2 / Hemojuvelin Antibody (clone 1C12) is for research use only and not for use in diagnostic or therapeutic procedures.

HFE2 / Hemojuvelin Antibody (clone 1C12) - Protein Information**Name** HJV ([HGNC:4887](#))**Synonyms** HFE2, RGMC**Function**

Acts as a bone morphogenetic protein (BMP) coreceptor (PubMed:18976966). Through enhancement of BMP signaling regulates hepcidin (HAMP) expression and regulates iron homeostasis (PubMed:18976966).

Cellular Location

Cell membrane; Lipid-anchor, GPI- anchor. Note=Also released in the extracellular space

Tissue Location

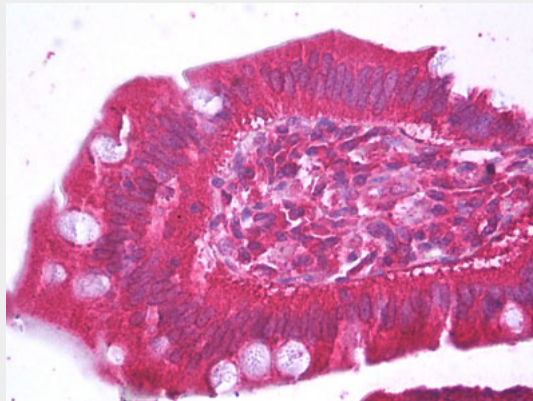
Adult and fetal liver, heart, and skeletal muscle.

HFE2 / Hemojuvelin Antibody (clone 1C12) - Protocols

Provided below are standard protocols that you may find useful for product applications.

- [Western Blot](#)
- [Blocking Peptides](#)
- [Dot Blot](#)
- [Immunohistochemistry](#)
- [Immunofluorescence](#)
- [Immunoprecipitation](#)
- [Flow Cytometry](#)
- [Cell Culture](#)

HFE2 / Hemojuvelin Antibody (clone 1C12) - Images



Anti-HFE2 antibody IHC of human small intestine.

HFE2 / Hemojuvelin Antibody (clone 1C12) - Background

Member of the repulsive guidance molecule (RGM) family. Involved in iron metabolism. Acts as a bone morphogenetic protein (BMP) coreceptor (By similarity). Enhancement of BMP signaling regulates hepcidin (HAMP) expression and iron metabolism (By similarity). May cooperate with hepcidin to restrict iron absorption in the gut. Could represent the cellular receptor for hepcidin.

HFE2 / Hemojuvelin Antibody (clone 1C12) - References

- Papanikolaou G., et al. *Nat. Genet.* 36:77-82(2004).
Ota T., et al. *Nat. Genet.* 36:40-45(2004).
Gregory S.G., et al. *Nature* 441:315-321(2006).
Mural R.J., et al. Submitted (JUL-2005) to the EMBL/GenBank/DDBJ databases.
Babitt J.L., et al. *Nat. Genet.* 38:531-539(2006).