

KRT15 / CK15 / Cytokeratin 15 Antibody (aa1-50)
Rabbit Polyclonal Antibody
Catalog # ALS14883

Specification

KRT15 / CK15 / Cytokeratin 15 Antibody (aa1-50) - Product Information

Application	WB, IHC
Primary Accession	P19012
Reactivity	Human, Mouse, Rat
Host	Rabbit
Clonality	Polyclonal
Calculated MW	49kDa KDa

KRT15 / CK15 / Cytokeratin 15 Antibody (aa1-50) - Additional Information

Gene ID 3866

Other Names

Keratin, type I cytoskeletal 15, Cytokeratin-15, CK-15, Keratin-15, K15, KRT15, KRTB

Target/Specificity

Keratin 15 Antibody detects endogenous levels of total Keratin 15 protein.

Reconstitution & Storage

Short term 4°C, long term aliquot and store at -20°C, avoid freeze thaw cycles.

Precautions

KRT15 / CK15 / Cytokeratin 15 Antibody (aa1-50) is for research use only and not for use in diagnostic or therapeutic procedures.

KRT15 / CK15 / Cytokeratin 15 Antibody (aa1-50) - Protein Information

Name KRT15

Synonyms KRTB

Tissue Location

Expressed in a discontinuous manner in the basal cell layer of adult skin epidermis, but continuously in the basal layer of fetal skin epidermis and nail. Also expressed in the outer root sheath above the hair bulb in hair follicle (at protein level) Expressed homogeneously in all cell layers of the esophagus and exocervix, but detected in the basal cell layer only of oral mucosa, skin and in the basal plus the next two layers of the suprabasal epithelium of the palate.

Volume

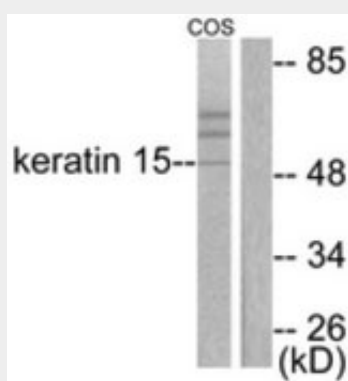
50 µl

KRT15 / CK15 / Cytokeratin 15 Antibody (aa1-50) - Protocols

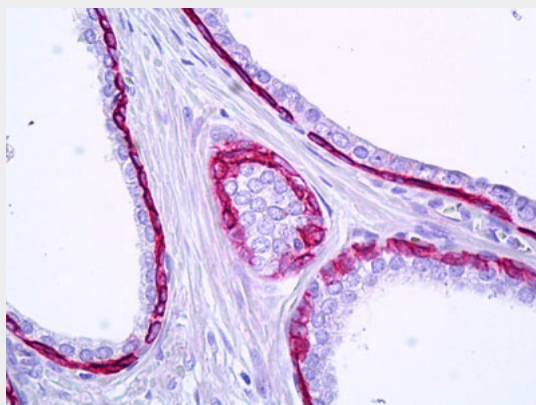
Provided below are standard protocols that you may find useful for product applications.

- [Western Blot](#)
- [Blocking Peptides](#)
- [Dot Blot](#)
- [Immunohistochemistry](#)
- [Immunofluorescence](#)
- [Immunoprecipitation](#)
- [Flow Cytometry](#)
- [Cell Culture](#)

KRT15 / CK15 / Cytokeratin 15 Antibody (aa1-50) - Images



Western blot of extracts from COS7 cells, using Keratin 15 Antibody.



Anti-KRT15 / Cytokeratin 15 antibody IHC of human prostate, epithelium.

KRT15 / CK15 / Cytokeratin 15 Antibody (aa1-50) - References

- Bader B.L., et al. *Eur. J. Cell Biol.* 47:300-319(1988).
Leube R.E., et al. *J. Cell Biol.* 106:1249-1261(1988).
Whitlock N.V., et al. *Biochem. Biophys. Res. Commun.* 267:462-465(2000).
Kalnina N., et al. Submitted (MAY-2003) to the EMBL/GenBank/DDBJ databases.
Ota T., et al. *Nat. Genet.* 36:40-45(2004).