

KRT8 / CK8 / Cytokeratin 8 Antibody (clone 35-beta-H11)
Mouse Monoclonal Antibody
Catalog # ALS14874

Specification

KRT8 / CK8 / Cytokeratin 8 Antibody (clone 35-beta-H11) - Product Information

Application	IHC
Primary Accession	P05787
Reactivity	Human
Host	Mouse
Clonality	Monoclonal
Calculated MW	54kDa KDa

KRT8 / CK8 / Cytokeratin 8 Antibody (clone 35-beta-H11) - Additional Information

Gene ID 3856

Other Names

Keratin, type II cytoskeletal 8, Cytokeratin-8, CK-8, Keratin-8, K8, Type-II keratin Kb8, KRT8, CYK8

Target/Specificity

Reacts exclusively with cytokeratin 8 which is present in glandular-type epithelia and most carcinomas derived thereof. It is in general not reactive in non-epithelial tissues and cells.

Reconstitution & Storage

Short term 4°C, long term aliquot and store at -20°C, avoid freeze thaw cycles. Store undiluted.

Precautions

KRT8 / CK8 / Cytokeratin 8 Antibody (clone 35-beta-H11) is for research use only and not for use in diagnostic or therapeutic procedures.

KRT8 / CK8 / Cytokeratin 8 Antibody (clone 35-beta-H11) - Protein Information

Name KRT8

Synonyms CYK8

Function

Together with KRT19, helps to link the contractile apparatus to dystrophin at the costameres of striated muscle.

Cellular Location

Cytoplasm. Nucleus, nucleoplasm {ECO:0000250|UniProtKB:Q10758}. Nucleus matrix {ECO:0000250|UniProtKB:Q10758}

Tissue Location

Observed in muscle fibers accumulating in the costameres of myoplasm at the sarcolemma membrane in structures that contain dystrophin and spectrin. Expressed in gingival mucosa and

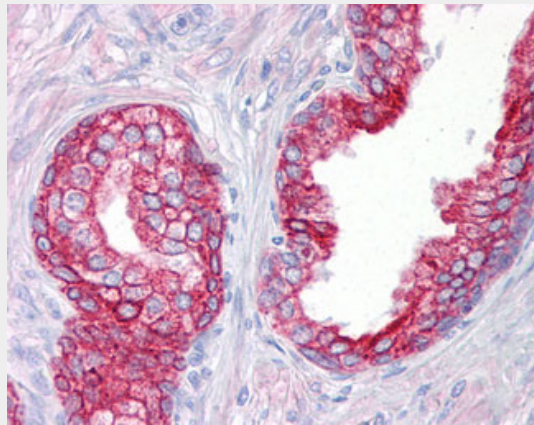
hard palate of the oral cavity.

KRT8 / CK8 / Cytokeratin 8 Antibody (clone 35-beta-H11) - Protocols

Provided below are standard protocols that you may find useful for product applications.

- [Western Blot](#)
- [Blocking Peptides](#)
- [Dot Blot](#)
- [Immunohistochemistry](#)
- [Immunofluorescence](#)
- [Immunoprecipitation](#)
- [Flow Cytometry](#)
- [Cell Culture](#)

KRT8 / CK8 / Cytokeratin 8 Antibody (clone 35-beta-H11) - Images



Anti-KRT8 / Cytokeratin 8 antibody IHC of human prostate.

KRT8 / CK8 / Cytokeratin 8 Antibody (clone 35-beta-H11) - Background

Together with KRT19, helps to link the contractile apparatus to dystrophin at the costameres of striated muscle.

KRT8 / CK8 / Cytokeratin 8 Antibody (clone 35-beta-H11) - References

- Krauss S., et al. *Gene* 86:241-249(1990).
Yamamoto R., et al. *Mol. Endocrinol.* 4:370-374(1990).
Waseem A., et al. *New Biol.* 2:464-478(1990).
Ku N.-O., et al. *J. Biol. Chem.* 272:7556-7564(1997).
Ota T., et al. *Nat. Genet.* 36:40-45(2004).