

**KRT8 / CK8 / Cytokeratin 8 Antibody (clone H1)**  
**Mouse Monoclonal Antibody**  
**Catalog # ALS14867**

**Specification**

---

**KRT8 / CK8 / Cytokeratin 8 Antibody (clone H1) - Product Information**

Application	IHC
Primary Accession	<a href="#">P05787</a>
Reactivity	Human
Host	Mouse
Clonality	Monoclonal
Calculated MW	54kDa KDa

**KRT8 / CK8 / Cytokeratin 8 Antibody (clone H1) - Additional Information**

**Gene ID** 3856

**Other Names**

Keratin, type II cytoskeletal 8, Cytokeratin-8, CK-8, Keratin-8, K8, Type-II keratin Kb8, KRT8, CYK8

**Target/Specificity**

Reacts with glandular epithelial cells (endocrine and exocrine) as well as mesothelial cells of the digestive, respiratory and urogenital tract and most adenocarcinomas derived from these cells.

**Reconstitution & Storage**

Short term 4°C, long term aliquot and store at -20°C, avoid freeze thaw cycles. Store undiluted.

**Precautions**

KRT8 / CK8 / Cytokeratin 8 Antibody (clone H1) is for research use only and not for use in diagnostic or therapeutic procedures.

**KRT8 / CK8 / Cytokeratin 8 Antibody (clone H1) - Protein Information**

**Name** KRT8

**Synonyms** CYK8

**Function**

Together with KRT19, helps to link the contractile apparatus to dystrophin at the costameres of striated muscle.

**Cellular Location**

Cytoplasm. Nucleus, nucleoplasm {ECO:0000250|UniProtKB:Q10758}. Nucleus matrix {ECO:0000250|UniProtKB:Q10758}

**Tissue Location**

Observed in muscle fibers accumulating in the costameres of myoplasm at the sarcolemma membrane in structures that contain dystrophin and spectrin. Expressed in gingival mucosa and

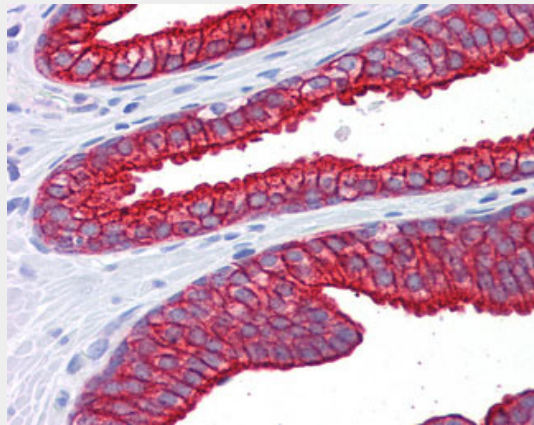
hard palate of the oral cavity.

### **KRT8 / CK8 / Cytokeratin 8 Antibody (clone H1) - Protocols**

Provided below are standard protocols that you may find useful for product applications.

- [Western Blot](#)
- [Blocking Peptides](#)
- [Dot Blot](#)
- [Immunohistochemistry](#)
- [Immunofluorescence](#)
- [Immunoprecipitation](#)
- [Flow Cytometry](#)
- [Cell Culture](#)

### **KRT8 / CK8 / Cytokeratin 8 Antibody (clone H1) - Images**



Anti-KRT8 / Cytokeratin 8 antibody IHC of human prostate.

### **KRT8 / CK8 / Cytokeratin 8 Antibody (clone H1) - Background**

Together with KRT19, helps to link the contractile apparatus to dystrophin at the costameres of striated muscle.

### **KRT8 / CK8 / Cytokeratin 8 Antibody (clone H1) - References**

- Krauss S., et al. *Gene* 86:241-249(1990).  
Yamamoto R., et al. *Mol. Endocrinol.* 4:370-374(1990).  
Waseem A., et al. *New Biol.* 2:464-478(1990).  
Ku N.-O., et al. *J. Biol. Chem.* 272:7556-7564(1997).  
Ota T., et al. *Nat. Genet.* 36:40-45(2004).