

**KRT7 / CK7 / Cytokeratin 7 Antibody (clone RCK105)**  
**Mouse Monoclonal Antibody**  
**Catalog # ALS14865**

**Specification**

---

**KRT7 / CK7 / Cytokeratin 7 Antibody (clone RCK105) - Product Information**

Application	IHC
Primary Accession	<a href="#">P08729</a>
Reactivity	Human, Mouse, Rat, Hamster, Pig, Dog, Cat
Host	Mouse
Clonality	Monoclonal
Calculated MW	51kDa KDa

**KRT7 / CK7 / Cytokeratin 7 Antibody (clone RCK105) - Additional Information**

**Gene ID** 3855

**Other Names**

Keratin, type II cytoskeletal 7, Cytokeratin-7, CK-7, Keratin-7, K7, Sarcolectin, Type-II keratin Kb7, KRT7, SCL

**Target/Specificity**

Reacts exclusively with cytokeratin 7 which is present in a subgroup of glandular epithelia and their tumors, as well as transitional epithelium and transitional carcinoma.

**Reconstitution & Storage**

Short term 4°C, long term aliquot and store at -20°C, avoid freeze thaw cycles. Store undiluted.

**Precautions**

KRT7 / CK7 / Cytokeratin 7 Antibody (clone RCK105) is for research use only and not for use in diagnostic or therapeutic procedures.

**KRT7 / CK7 / Cytokeratin 7 Antibody (clone RCK105) - Protein Information**

**Name** KRT7

**Synonyms** SCL

**Function**

Blocks interferon-dependent interphase and stimulates DNA synthesis in cells. Involved in the translational regulation of the human papillomavirus type 16 E7 mRNA (HPV16 E7).

**Cellular Location**

Cytoplasm.

**Tissue Location**

Expressed in cultured epidermal, bronchial and mesothelial cells but absent in colon, ectocervix and liver. Observed throughout the glandular cells in the junction between stomach and

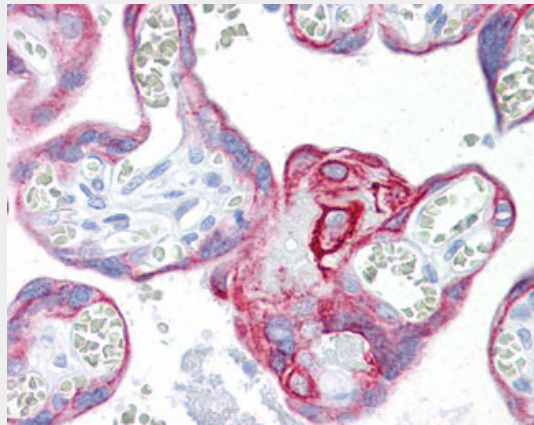
esophagus but is absent in the esophagus.

### **KRT7 / CK7 / Cytokeratin 7 Antibody (clone RCK105) - Protocols**

Provided below are standard protocols that you may find useful for product applications.

- [Western Blot](#)
- [Blocking Peptides](#)
- [Dot Blot](#)
- [Immunohistochemistry](#)
- [Immunofluorescence](#)
- [Immunoprecipitation](#)
- [Flow Cytometry](#)
- [Cell Culture](#)

### **KRT7 / CK7 / Cytokeratin 7 Antibody (clone RCK105) - Images**



Anti-KRT7 / Cytokeratin 7 antibody IHC of human placenta.

### **KRT7 / CK7 / Cytokeratin 7 Antibody (clone RCK105) - Background**

Blocks interferon-dependent interphase and stimulates DNA synthesis in cells. Involved in the translational regulation of the human papillomavirus type 16 E7 mRNA (HPV16 E7).

### **KRT7 / CK7 / Cytokeratin 7 Antibody (clone RCK105) - References**

- Glass C., et al. J. Cell Biol. 101:2366-2373(1985).  
Glass C., et al. J. Cell Biol. 107:1337-1350(1988).  
Kaba A., et al. Biochimie 81:709-715(1999).  
Smith F.J.D., et al. Biochem. Biophys. Res. Commun. 297:818-827(2002).  
Scherer S.E., et al. Nature 440:346-351(2006).