

NCK1 / NCK Antibody
Rabbit Polyclonal Antibody
Catalog # ALS14850**Specification**

NCK1 / NCK Antibody - Product Information

Application	WB, IHC
Primary Accession	P16333
Reactivity	Human, Mouse
Host	Rabbit
Clonality	Polyclonal
Calculated MW	43kDa KDa

NCK1 / NCK Antibody - Additional Information**Gene ID** 4690**Other Names**

Cytoplasmic protein NCK1, NCK adaptor protein 1, Nck-1, SH2/SH3 adaptor protein NCK-alpha, NCK1, NCK

Reconstitution & Storage

Short term 4°C, long term aliquot and store at -20°C, avoid freeze thaw cycles.

Precautions

NCK1 / NCK Antibody is for research use only and not for use in diagnostic or therapeutic procedures.

NCK1 / NCK Antibody - Protein Information**Name** NCK1**Synonyms** NCK**Function**

Adapter protein which associates with tyrosine-phosphorylated growth factor receptors, such as KDR and PDGFRB, or their cellular substrates. Maintains low levels of EIF2S1 phosphorylation by promoting its dephosphorylation by PP1. Plays a role in the DNA damage response, not in the detection of the damage by ATM/ATR, but for efficient activation of downstream effectors, such as that of CHEK2. Plays a role in ELK1-dependent transcriptional activation in response to activated Ras signaling. Modulates the activation of EIF2AK2/PKR by dsRNA. May play a role in cell adhesion and migration through interaction with ephrin receptors.

Cellular Location

Cytoplasm. Endoplasmic reticulum. Nucleus. Note=Mostly cytoplasmic, but shuttles between the cytoplasm and the nucleus. Import into the nucleus requires the interaction with SOCS7
Predominantly nuclear following genotoxic stresses, such as UV irradiation, hydroxyurea or mitomycin C treatments

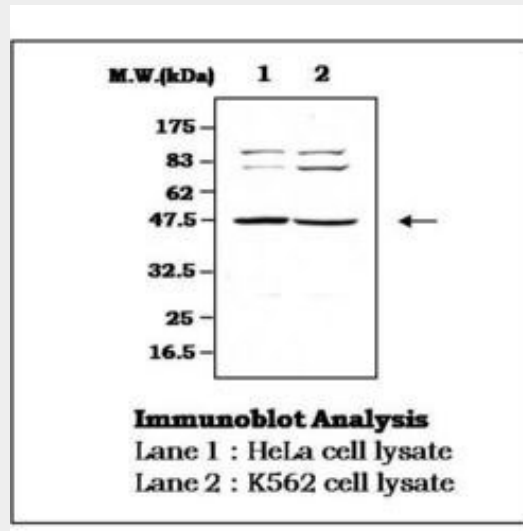
Volume
50 µl

NCK1 / NCK Antibody - Protocols

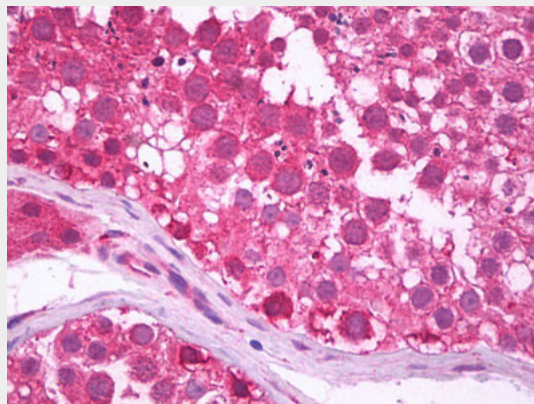
Provided below are standard protocols that you may find useful for product applications.

- [Western Blot](#)
- [Blocking Peptides](#)
- [Dot Blot](#)
- [Immunohistochemistry](#)
- [Immunofluorescence](#)
- [Immunoprecipitation](#)
- [Flow Cytometry](#)
- [Cell Culture](#)

NCK1 / NCK Antibody - Images



0



Anti-NCK1 antibody IHC of human testis.

NCK1 / NCK Antibody - Background

Adapter protein which associates with tyrosine- phosphorylated growth factor receptors, such as KDR and PDGFRB, or their cellular substrates. Maintains low levels of EIF2S1 phosphorylation by promoting its dephosphorylation by PP1. Plays a role in the DNA damage response, not in the detection of the damage by ATM/ATR, but for efficient activation of downstream effectors, such as that of CHEK2. Plays a role in ELK1-dependent transcriptional activation in response to activated Ras signaling. Modulates the activation of EIF2AK2/PKR by dsRNA. May play a role in cell adhesion and migration through interaction with ephrin receptors.

NCK1 / NCK Antibody - References

- Lehmann J.M.,et al.Nucleic Acids Res. 18:1048-1048(1990).
Ota T.,et al.Nat. Genet. 36:40-45(2004).
Muzny D.M.,et al.Nature 440:1194-1198(2006).
Mural R.J.,et al.Submitted (SEP-2005) to the EMBL/GenBank/DDBJ databases.
Park D.,et al.Mol. Cell. Biol. 12:5816-5823(1992).