

**Vimentin Antibody (clone 35E2)**  
**Mouse Monoclonal Antibody**  
**Catalog # ALS14839**

## Specification

---

### Vimentin Antibody (clone 35E2) - Product Information

Application	WB
Primary Accession	<a href="#">P08670</a>
Reactivity	Human, Rat
Host	Mouse
Clonality	Monoclonal
Calculated MW	54kDa KDa

### Vimentin Antibody (clone 35E2) - Additional Information

Gene ID 7431

#### Other Names

Vimentin, VIM

#### Reconstitution & Storage

Short term 4°C, long term aliquot and store at -20°C, avoid freeze thaw cycles.

#### Precautions

Vimentin Antibody (clone 35E2) is for research use only and not for use in diagnostic or therapeutic procedures.

### Vimentin Antibody (clone 35E2) - Protein Information

Name VIM ([HGNC:12692](#))

#### Function

Vimentins are class-III intermediate filaments found in various non-epithelial cells, especially mesenchymal cells. Vimentin is attached to the nucleus, endoplasmic reticulum, and mitochondria, either laterally or terminally. Plays a role in cell directional movement, orientation, cell sheet organization and Golgi complex polarization at the cell migration front (By similarity). Protects SCRIB from proteasomal degradation and facilitates its localization to intermediate filaments in a cell contact-mediated manner (By similarity).

#### Cellular Location

Cytoplasm. Cytoplasm, cytoskeleton. Nucleus matrix {ECO:0000250|UniProtKB:P31000}. Cell membrane {ECO:0000250|UniProtKB:P20152}

#### Tissue Location

Highly expressed in fibroblasts, some expression in T- and B-lymphocytes, and little or no expression in Burkitt's lymphoma cell lines. Expressed in many hormone-independent mammary carcinoma cell lines.

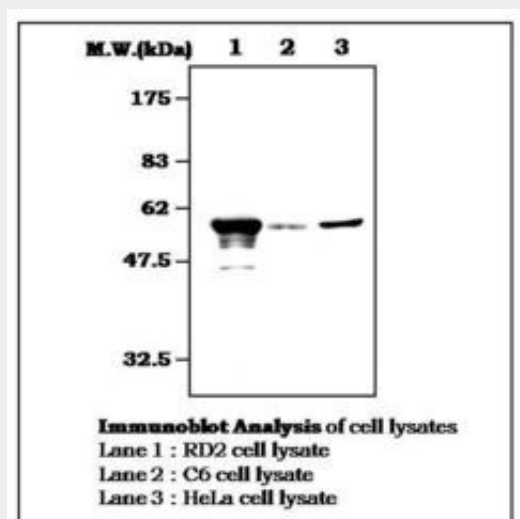
**Volume**  
50  $\mu$ l

### Vimentin Antibody (clone 35E2) - Protocols

Provided below are standard protocols that you may find useful for product applications.

- [Western Blot](#)
- [Blocking Peptides](#)
- [Dot Blot](#)
- [Immunohistochemistry](#)
- [Immunofluorescence](#)
- [Immunoprecipitation](#)
- [Flow Cytometry](#)
- [Cell Culture](#)

### Vimentin Antibody (clone 35E2) - Images



0

### Vimentin Antibody (clone 35E2) - Background

Vimentins are class-III intermediate filaments found in various non-epithelial cells, especially mesenchymal cells. Vimentin is attached to the nucleus, endoplasmic reticulum, and mitochondria, either laterally or terminally.

### Vimentin Antibody (clone 35E2) - References

- Ferrari S., et al. Mol. Cell. Biol. 6:3614-3620(1986).  
Honore B., et al. Nucleic Acids Res. 18:6692-6692(1990).  
Hartmann T.B., et al. Br. J. Dermatol. 150:252-258(2004).  
Zimbelmann R., et al. Submitted (JUN-2007) to the EMBL/GenBank/DDBJ databases.  
Ota T., et al. Nat. Genet. 36:40-45(2004).