

Vimentin Antibody (clone 23H2)
Mouse Monoclonal Antibody
Catalog # ALS14815**Specification**

Vimentin Antibody (clone 23H2) - Product Information

Application	WB, IHC
Primary Accession	P08670
Reactivity	Human, Rat
Host	Mouse
Clonality	Monoclonal
Calculated MW	54kDa KDa

Vimentin Antibody (clone 23H2) - Additional Information**Gene ID** 7431**Other Names**

Vimentin, VIM

Reconstitution & Storage

Short term 4°C, long term aliquot and store at -20°C, avoid freeze thaw cycles.

Precautions

Vimentin Antibody (clone 23H2) is for research use only and not for use in diagnostic or therapeutic procedures.

Vimentin Antibody (clone 23H2) - Protein Information**Name** VIM ([HGNC:12692](#))**Function**

Vimentins are class-III intermediate filaments found in various non-epithelial cells, especially mesenchymal cells. Vimentin is attached to the nucleus, endoplasmic reticulum, and mitochondria, either laterally or terminally. Plays a role in cell directional movement, orientation, cell sheet organization and Golgi complex polarization at the cell migration front (By similarity). Protects SCRIB from proteasomal degradation and facilitates its localization to intermediate filaments in a cell contact-mediated manner (By similarity).

Cellular Location

Cytoplasm. Cytoplasm, cytoskeleton. Nucleus matrix {ECO:0000250|UniProtKB:P31000}. Cell membrane {ECO:0000250|UniProtKB:P20152}

Tissue Location

Highly expressed in fibroblasts, some expression in T- and B-lymphocytes, and little or no expression in Burkitt's lymphoma cell lines. Expressed in many hormone-independent mammary carcinoma cell lines.

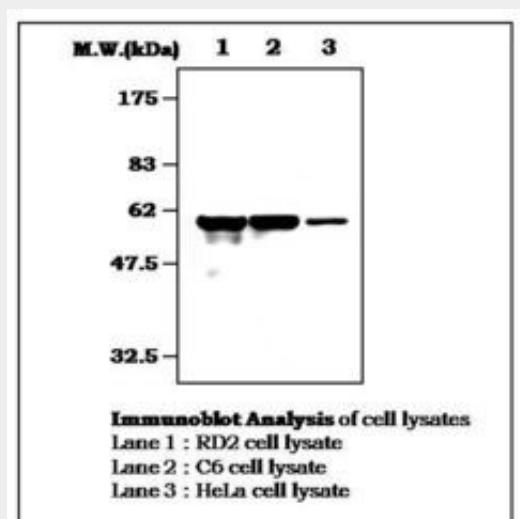
Volume
50 μ l

Vimentin Antibody (clone 23H2) - Protocols

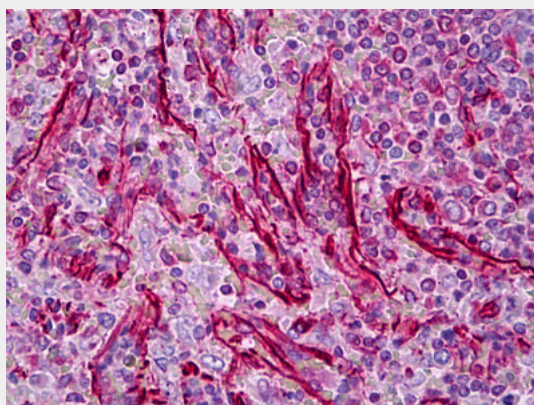
Provided below are standard protocols that you may find useful for product applications.

- [Western Blot](#)
- [Blocking Peptides](#)
- [Dot Blot](#)
- [Immunohistochemistry](#)
- [Immunofluorescence](#)
- [Immunoprecipitation](#)
- [Flow Cytometry](#)
- [Cell Culture](#)

Vimentin Antibody (clone 23H2) - Images



0



Anti-Vimentin antibody IHC of human spleen.

Vimentin Antibody (clone 23H2) - Background

Vimentins are class-III intermediate filaments found in various non-epithelial cells, especially

mesenchymal cells. Vimentin is attached to the nucleus, endoplasmic reticulum, and mitochondria, either laterally or terminally.

Vimentin Antibody (clone 23H2) - References

- Ferrari S.,et al.Mol. Cell. Biol. 6:3614-3620(1986).
Honore B.,et al.Nucleic Acids Res. 18:6692-6692(1990).
Hartmann T.B.,et al.Br. J. Dermatol. 150:252-258(2004).
Zimbelmann R.,et al.Submitted (JUN-2007) to the EMBL/GenBank/DDBJ databases.
Ota T.,et al.Nat. Genet. 36:40-45(2004).