

ALB / Serum Albumin Antibody (clone 1G2)
Mouse Monoclonal Antibody
Catalog # ALS14797**Specification**

ALB / Serum Albumin Antibody (clone 1G2) - Product Information

Application	WB
Primary Accession	P02768
Reactivity	Human
Host	Mouse
Clonality	Monoclonal
Calculated MW	69kDa KDa

ALB / Serum Albumin Antibody (clone 1G2) - Additional Information**Gene ID** 213**Other Names**

Serum albumin, ALB

Reconstitution & Storage

Short term 4°C, long term aliquot and store at -20°C, avoid freeze thaw cycles.

Precautions

ALB / Serum Albumin Antibody (clone 1G2) is for research use only and not for use in diagnostic or therapeutic procedures.

ALB / Serum Albumin Antibody (clone 1G2) - Protein Information**Name** ALB**Function**

Binds water, Ca(2+), Na(+), K(+), fatty acids, hormones, bilirubin and drugs (Probable). Its main function is the regulation of the colloidal osmotic pressure of blood (Probable). Major zinc transporter in plasma, typically binds about 80% of all plasma zinc (PubMed:[19021548](http://www.uniprot.org/citations/19021548)). Major calcium and magnesium transporter in plasma, binds approximately 45% of circulating calcium and magnesium in plasma (By similarity). Potentially has more than two calcium-binding sites and might additionally bind calcium in a non-specific manner (By similarity). The shared binding site between zinc and calcium at residue Asp-273 suggests a crosstalk between zinc and calcium transport in the blood (By similarity). The rank order of affinity is zinc > calcium > magnesium (By similarity). Binds to the bacterial siderophore enterobactin and inhibits enterobactin-mediated iron uptake of E.coli from ferric transferrin, and may thereby limit the utilization of iron and growth of enteric bacteria such as E.coli (PubMed:[6234017](http://www.uniprot.org/citations/6234017)). Does not prevent iron uptake by the bacterial siderophore aerobactin (PubMed:[6234017](http://www.uniprot.org/citations/6234017)).

Cellular Location
Secreted.

Tissue Location
Plasma.

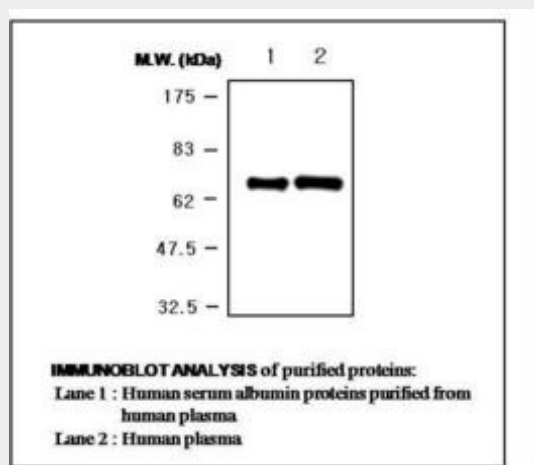
Volume
50 μ l

ALB / Serum Albumin Antibody (clone 1G2) - Protocols

Provided below are standard protocols that you may find useful for product applications.

- [Western Blot](#)
- [Blocking Peptides](#)
- [Dot Blot](#)
- [Immunohistochemistry](#)
- [Immunofluorescence](#)
- [Immunoprecipitation](#)
- [Flow Cytometry](#)
- [Cell Culture](#)

ALB / Serum Albumin Antibody (clone 1G2) - Images



ALB / Serum Albumin Antibody (clone 1G2) - Background

Serum albumin, the main protein of plasma, has a good binding capacity for water, Ca^{2+} , Na^{+} , K^{+} , fatty acids, hormones, bilirubin and drugs. Its main function is the regulation of the colloidal osmotic pressure of blood. Major zinc transporter in plasma, typically binds about 80% of all plasma zinc.

ALB / Serum Albumin Antibody (clone 1G2) - References

Lawn R.M., et al. Nucleic Acids Res. 9:6103-6114(1981).
Dugaiczek A., et al. Proc. Natl. Acad. Sci. U.S.A. 79:71-75(1982).
Minghetti P.P., et al. J. Biol. Chem. 261:6747-6757(1986).
Yang S., et al. Submitted (SEP-1999) to the EMBL/GenBank/DDBJ databases.

Huang M.C., et al. Submitted (AUG-2002) to the EMBL/GenBank/DDBJ databases.