

**CGB / hCG Beta Antibody (aa101-150)**  
**Rabbit Polyclonal Antibody**  
**Catalog # ALS14770**

**Specification**

---

**CGB / hCG Beta Antibody (aa101-150) - Product Information**

Application	<b>WB</b>
Primary Accession	<a href="#">PODN86</a>
Reactivity	<b>Human</b>
Host	<b>Rabbit</b>
Clonality	<b>Polyclonal</b>

**CGB / hCG Beta Antibody (aa101-150) - Additional Information**

**Gene ID** 1082;93659;94115

**Target/Specificity**

hCG beta Antibody detects endogenous levels of total hCG beta protein.

**Reconstitution & Storage**

Short term 4°C, long term aliquot and store at -20°C, avoid freeze thaw cycles.

**Precautions**

CGB / hCG Beta Antibody (aa101-150) is for research use only and not for use in diagnostic or therapeutic procedures.

**CGB / hCG Beta Antibody (aa101-150) - Protein Information**

**Name** CGB3

**Synonyms** CGB

**Function**

Beta subunit of the human chorionic gonadotropin (hCG). hCG is a complex glycoprotein composed of two glycosylated subunits alpha and beta which are non-covalently associated. The alpha subunit is identical to those in the pituitary gonadotropin hormones (LH, FSH and TSH). The beta subunits are distinct in each of the hormones and confer receptor and biological specificity. Has an essential role in pregnancy and maternal adaptation. Stimulates the ovaries to synthesize the steroids that are essential for the maintenance of pregnancy.

**Cellular Location**

Secreted.

**Tissue Location**

High expression in the placenta throughout pregnancy.

**Volume**

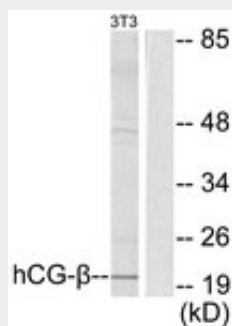
50 µl

## CGB / hCG Beta Antibody (aa101-150) - Protocols

Provided below are standard protocols that you may find useful for product applications.

- [Western Blot](#)
- [Blocking Peptides](#)
- [Dot Blot](#)
- [Immunohistochemistry](#)
- [Immunofluorescence](#)
- [Immunoprecipitation](#)
- [Flow Cytometry](#)
- [Cell Culture](#)

## CGB / hCG Beta Antibody (aa101-150) - Images



Western blot of extracts from NIH-3T3 cells, using hCG beta Antibody.