

AXIN2 / Axin 2 Antibody (C-Terminus)
Rabbit Polyclonal Antibody
Catalog # ALS14756**Specification**

AXIN2 / Axin 2 Antibody (C-Terminus) - Product Information

Application	IF, WB
Primary Accession	O9Y2T1
Reactivity	Human
Host	Rabbit
Clonality	Polyclonal
Calculated MW	94kDa KDa

AXIN2 / Axin 2 Antibody (C-Terminus) - Additional Information**Gene ID** 8313**Other Names**

Axin-2, Axin-like protein, Axil, Axis inhibition protein 2, Conductin, AXIN2

Target/Specificity

Human AXIN2. AXIN2 antibody is predicted to not cross-react with AXIN2. At least four isoforms of AXIN2 are known to exist; this antibody will recognize all four.

Reconstitution & Storage

Short term 4°C, long term aliquot and store at -20°C, avoid freeze thaw cycles. Store undiluted.

Precautions

AXIN2 / Axin 2 Antibody (C-Terminus) is for research use only and not for use in diagnostic or therapeutic procedures.

AXIN2 / Axin 2 Antibody (C-Terminus) - Protein Information**Name** AXIN2**Function**

Inhibitor of the Wnt signaling pathway. Down-regulates beta- catenin. Probably facilitate the phosphorylation of beta-catenin and APC by GSK3B.

Cellular Location

Cytoplasm.

Tissue Location

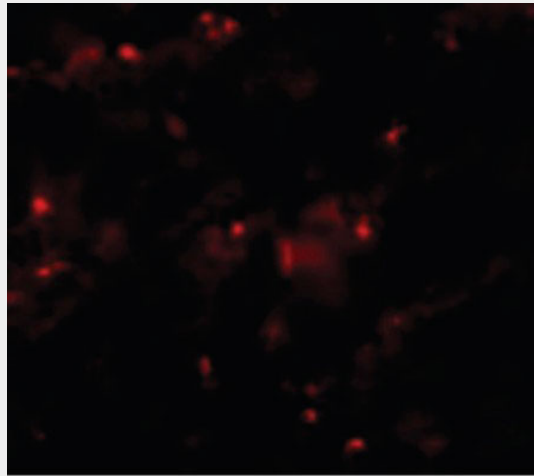
Expressed in brain and lymphoblast.

AXIN2 / Axin 2 Antibody (C-Terminus) - Protocols

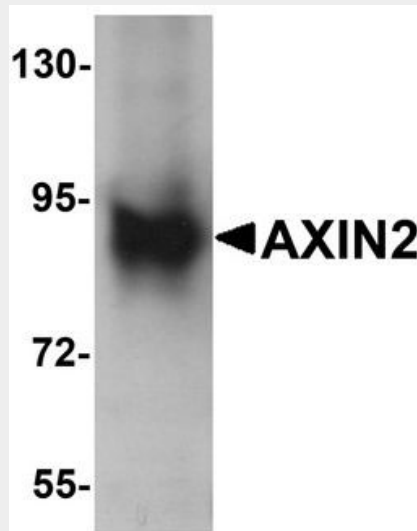
Provided below are standard protocols that you may find useful for product applications.

- [Western Blot](#)
- [Blocking Peptides](#)
- [Dot Blot](#)
- [Immunohistochemistry](#)
- [Immunofluorescence](#)
- [Immunoprecipitation](#)
- [Flow Cytometry](#)
- [Cell Culture](#)

AXIN2 / Axin 2 Antibody (C-Terminus) - Images



Immunofluorescence of AXIN2 in Rat Lung cells with AXIN2 antibody at 20 ug/ml.



Western blot analysis of AXIN2 in mouse lung lysate with AXIN2 antibody at 1 ug/ml.

AXIN2 / Axin 2 Antibody (C-Terminus) - Background

Inhibitor of the Wnt signaling pathway. Down-regulates beta-catenin. Probably facilitate the phosphorylation of beta- catenin and APC by GSK3B (By similarity).

AXIN2 / Axin 2 Antibody (C-Terminus) - References

Mai M.,et al.Genomics 55:341-344(1999).
Zhang T.,et al.Submitted (NOV-1999) to the EMBL/GenBank/DDBJ databases.
Zody M.C.,et al.Nature 440:1045-1049(2006).
Takahashi M.,et al.Submitted (DEC-2000) to the EMBL/GenBank/DDBJ databases.
Liu W.,et al.Nat. Genet. 26:146-147(2000).