

**CLDN3 / Claudin 3 Antibody (aa171-220)**  
**Rabbit Polyclonal Antibody**  
**Catalog # ALS14744**

**Specification**

---

**CLDN3 / Claudin 3 Antibody (aa171-220) - Product Information**

Application	IF, IHC
Primary Accession	<a href="#">O15551</a>
Reactivity	Human, Mouse, Rat
Host	Rabbit
Clonality	Polyclonal
Calculated MW	23kDa KDa

**CLDN3 / Claudin 3 Antibody (aa171-220) - Additional Information**

**Gene ID** 1365

**Other Names**

Claudin-3, Clostridium perfringens enterotoxin receptor 2, CPE-R 2, CPE-receptor 2, Rat ventral prostate.1 protein homolog, hRVP1, CLDN3, C7orf1, CPETR2

**Target/Specificity**

Claudin 3 Antibody detects endogenous levels of total Claudin 3 protein.

**Reconstitution & Storage**

Short term 4°C, long term aliquot and store at -20°C, avoid freeze thaw cycles.

**Precautions**

CLDN3 / Claudin 3 Antibody (aa171-220) is for research use only and not for use in diagnostic or therapeutic procedures.

**CLDN3 / Claudin 3 Antibody (aa171-220) - Protein Information**

**Name** CLDN3

**Synonyms** C7orf1, CPETR2

**Function**

Barrier-forming claudin. Plays a major role in tight junction-specific obliteration of the intercellular space, through calcium-independent cell-adhesion activity.

**Cellular Location**

Cell junction, tight junction. Cell membrane; Multi-pass membrane protein

**Volume**

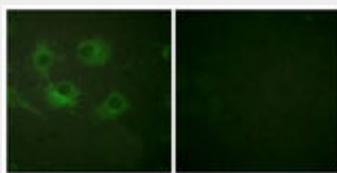
50 µl

## CLDN3 / Claudin 3 Antibody (aa171-220) - Protocols

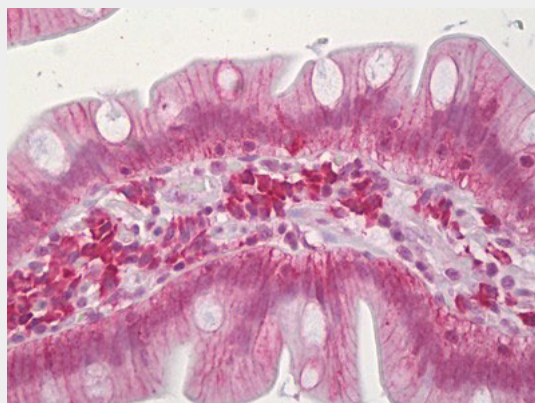
Provided below are standard protocols that you may find useful for product applications.

- [Western Blot](#)
- [Blocking Peptides](#)
- [Dot Blot](#)
- [Immunohistochemistry](#)
- [Immunofluorescence](#)
- [Immunoprecipitation](#)
- [Flow Cytometry](#)
- [Cell Culture](#)

## CLDN3 / Claudin 3 Antibody (aa171-220) - Images



Immunofluorescence of HUVEC cells, using Claudin 3 Antibody.



Anti-CLDN3 / Claudin 3 antibody IHC of human small intestine.

## CLDN3 / Claudin 3 Antibody (aa171-220) - Background

Plays a major role in tight junction-specific obliteration of the intercellular space, through calcium-independent cell-adhesion activity.

## CLDN3 / Claudin 3 Antibody (aa171-220) - References

Peacock R.E., et al. *Genomics* 46:443-449(1997).  
Katahira J., et al. *J. Biol. Chem.* 272:26652-26658(1997).