

**Leukotriene B4 Receptor / BLT1 Antibody**  
**Rabbit Polyclonal Antibody**  
**Catalog # ALS14700**

**Specification**

---

**Leukotriene B4 Receptor / BLT1 Antibody - Product Information**

Application	IHC
Primary Accession	<a href="#">Q15722</a>
Reactivity	Human
Host	Rabbit
Clonality	Polyclonal
Calculated MW	38kDa KDa

**Leukotriene B4 Receptor / BLT1 Antibody - Additional Information**

**Gene ID** 1241

**Other Names**

Leukotriene B4 receptor 1, LTB4-R 1, LTB4-R1, Chemoattractant receptor-like 1, G-protein coupled receptor 16, P2Y purinoceptor 7, P2Y7, LTB4R, BLT, BLT1, BLTR, CMKRL1, GPR16, P2RY7

**Reconstitution & Storage**

Short term 4°C, long term aliquot and store at -20°C, avoid freeze thaw cycles.

**Precautions**

Leukotriene B4 Receptor / BLT1 Antibody is for research use only and not for use in diagnostic or therapeutic procedures.

**Leukotriene B4 Receptor / BLT1 Antibody - Protein Information**

**Name** LTB4R

**Synonyms** BLT, BLT1, BLTR, CMKRL1, GPR16, P2RY7

**Function**

Receptor for extracellular ATP > UTP and ADP. The activity of this receptor is mediated by G proteins which activate a phosphatidylinositol-calcium second messenger system. May be the cardiac P2Y receptor involved in the regulation of cardiac muscle contraction through modulation of L-type calcium currents. Is a receptor for leukotriene B4, a potent chemoattractant involved in inflammation and immune response.

**Cellular Location**

Cell membrane; Multi-pass membrane protein.

**Tissue Location**

Expressed at highest levels in heart, skeletal muscle and at lower levels in brain and liver. High level of expression in lymphoid tissues

**Volume**

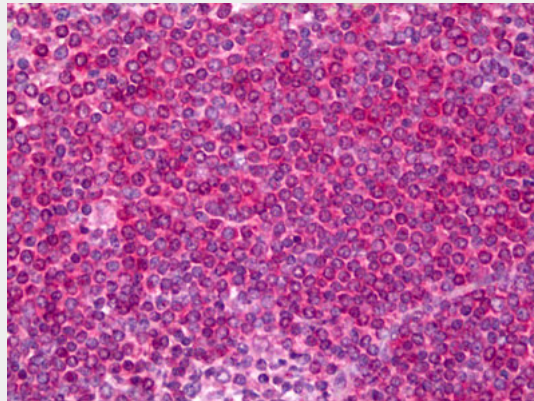
1 ea

**Leukotriene B4 Receptor / BLT1 Antibody - Protocols**

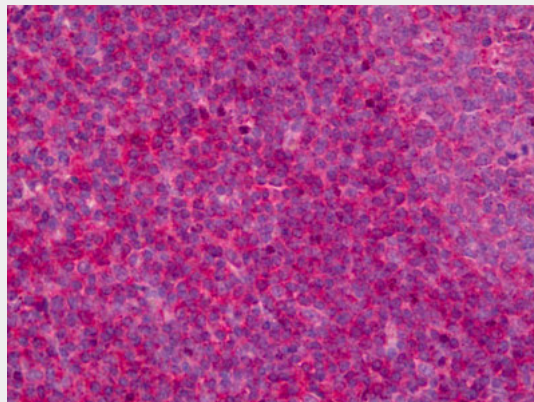
Provided below are standard protocols that you may find useful for product applications.

- [Western Blot](#)
- [Blocking Peptides](#)
- [Dot Blot](#)
- [Immunohistochemistry](#)
- [Immunofluorescence](#)
- [Immunoprecipitation](#)
- [Flow Cytometry](#)
- [Cell Culture](#)

**Leukotriene B4 Receptor / BLT1 Antibody - Images**



Anti-Leukotriene B4 Receptor antibody IHC of human spleen.



Anti-Leukotriene B4 Receptor antibody IHC of human tonsil.

**Leukotriene B4 Receptor / BLT1 Antibody - Background**

Receptor for extracellular ATP > UTP and ADP. The activity of this receptor is mediated by G proteins which activate a phosphatidylinositol-calcium second messenger system. May be the cardiac P2Y receptor involved in the regulation of cardiac muscle contraction through modulation of L-type calcium currents. Is a receptor for leukotriene B4, a potent chemoattractant involved in

inflammation and immune response.

### **Leukotriene B4 Receptor / BLT1 Antibody - References**

- Akbar G.K.M.,et al.J. Biol. Chem. 271:18363-18367(1996).  
Raport C.J.,et al.J. Leukoc. Biol. 59:18-23(1996).  
Yokomizo T.,et al.Nature 387:620-624(1997).  
Owman C.S.O.,et al.Genomics 37:187-194(1996).  
Kato K.,et al.J. Exp. Med. 192:413-420(2000).