

HPN / TMPRSS1 / Hepsin Antibody
Rabbit Polyclonal Antibody
Catalog # ALS14692

Specification

HPN / TMPRSS1 / Hepsin Antibody - Product Information

Application	IHC
Primary Accession	P05981
Reactivity	Human, Rabbit, Monkey, Bovine, Dog
Host	Rabbit
Clonality	Polyclonal
Calculated MW	45kDa KDa

HPN / TMPRSS1 / Hepsin Antibody - Additional Information

Gene ID 3249

Other Names

Serine protease hepsin, 3.4.21.106, Transmembrane protease serine 1, Serine protease hepsin non-catalytic chain, Serine protease hepsin catalytic chain, HPN, TMPRSS1

Reconstitution & Storage

Short term 4°C, long term aliquot and store at -20°C, avoid freeze thaw cycles.

Precautions

HPN / TMPRSS1 / Hepsin Antibody is for research use only and not for use in diagnostic or therapeutic procedures.

HPN / TMPRSS1 / Hepsin Antibody - Protein Information

Name HPN

Synonyms TMPRSS1

Function

Serine protease that cleaves extracellular substrates, and contributes to the proteolytic processing of growth factors, such as HGF and MST1/HGFL (PubMed: [15839837](http://www.uniprot.org/citations/15839837), PubMed: [21875933](http://www.uniprot.org/citations/21875933)). Plays a role in cell growth and maintenance of cell morphology (PubMed: [21875933](http://www.uniprot.org/citations/21875933), PubMed: [8346233](http://www.uniprot.org/citations/8346233)). Plays a role in the proteolytic processing of ACE2 (PubMed: [24227843](http://www.uniprot.org/citations/24227843)). Mediates the proteolytic cleavage of urinary UMOD that is required for UMOD polymerization (PubMed: [26673890](http://www.uniprot.org/citations/26673890)).

Cellular Location

Cell membrane; Single-pass type II membrane protein Apical cell membrane; Single-pass type II membrane protein

Tissue Location

Detected in liver and kidney.

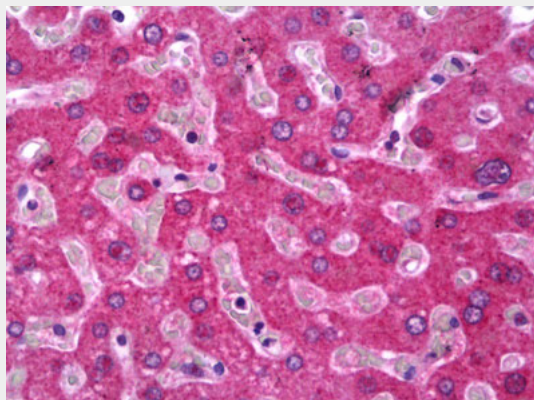
Volume

100 μ l

HPN / TMPRSS1 / Hepsin Antibody - Protocols

Provided below are standard protocols that you may find useful for product applications.

- [Western Blot](#)
- [Blocking Peptides](#)
- [Dot Blot](#)
- [Immunohistochemistry](#)
- [Immunofluorescence](#)
- [Immunoprecipitation](#)
- [Flow Cytometry](#)
- [Cell Culture](#)

HPN / TMPRSS1 / Hepsin Antibody - Images

Anti-HPN / Hepsin antibody IHC of human liver.

HPN / TMPRSS1 / Hepsin Antibody - Background

Plays an essential role in cell growth and maintenance of cell morphology. May mediate the activating cleavage of HGF and MST1/HGFL. Plays a role in the proteolytic processing of ACE2.

HPN / TMPRSS1 / Hepsin Antibody - References

- Leytus S.P., et al. *Biochemistry* 27:1067-1074(1988).
Ota T., et al. *Nat. Genet.* 36:40-45(2004).
Tsuji A., et al. *J. Biol. Chem.* 266:16948-16953(1991).
Torres-Rosado A., et al. *Proc. Natl. Acad. Sci. U.S.A.* 90:7181-7185(1993).
Chen R., et al. *J. Proteome Res.* 8:651-661(2009).