

**WC1 / ATP7B Antibody (aa161-210)**  
**Rabbit Polyclonal Antibody**  
**Catalog # ALS14691****Specification**

---

**WC1 / ATP7B Antibody (aa161-210) - Product Information**

Application	<b>IF</b>
Primary Accession	<a href="#">P35670</a>
Reactivity	<b>Human, Mouse, Rat</b>
Host	<b>Rabbit</b>
Clonality	<b>Polyclonal</b>
Calculated MW	<b>157kDa KDa</b>

**WC1 / ATP7B Antibody (aa161-210) - Additional Information****Gene ID** 540**Other Names**

Copper-transporting ATPase 2, 3.6.3.54, Copper pump 2, Wilson disease-associated protein, WND/140 kDa, ATP7B, PWD, WC1, WND

**Target/Specificity**

ATP7B Antibody detects endogenous levels of total ATP7B protein.

**Reconstitution & Storage**

Short term 4°C, long term aliquot and store at -20°C, avoid freeze thaw cycles.

**Precautions**

WC1 / ATP7B Antibody (aa161-210) is for research use only and not for use in diagnostic or therapeutic procedures.

**WC1 / ATP7B Antibody (aa161-210) - Protein Information****Name** ATP7B**Synonyms** PWD, WC1, WND**Function**

Copper ion transmembrane transporter involved in the export of copper out of the cells. It is involved in copper homeostasis in the liver, where it ensures the efflux of copper from hepatocytes into the bile in response to copper overload.

**Cellular Location**

Golgi apparatus, trans-Golgi network membrane; Multi-pass membrane protein. Late endosome Note=Predominantly found in the trans-Golgi network (TGN). Localized in the trans-Golgi network under low copper conditions, redistributes to cytoplasmic vesicles when cells are exposed to elevated copper levels, and then recycles back to the trans-Golgi network when copper is removed (PubMed:10942420). [Isoform 2]: Cytoplasm

**Tissue Location**

Most abundant in liver and kidney and also found in brain. Isoform 2 is expressed in brain but not in liver. The cleaved form WND/140 kDa is found in liver cell lines and other tissues

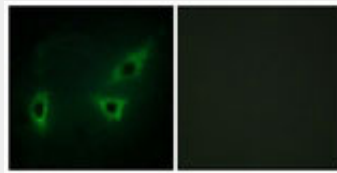
**Volume**

100  $\mu$ l

**WC1 / ATP7B Antibody (aa161-210) - Protocols**

Provided below are standard protocols that you may find useful for product applications.

- [Western Blot](#)
- [Blocking Peptides](#)
- [Dot Blot](#)
- [Immunohistochemistry](#)
- [Immunofluorescence](#)
- [Immunoprecipitation](#)
- [Flow Cytometry](#)
- [Cell Culture](#)

**WC1 / ATP7B Antibody (aa161-210) - Images**

Immunofluorescence of HeLa cells, using ATP7B Antibody.

**WC1 / ATP7B Antibody (aa161-210) - Background**

Involved in the export of copper out of the cells, such as the efflux of hepatic copper into the bile.

**WC1 / ATP7B Antibody (aa161-210) - References**

- Petrukhin K., et al. Hum. Mol. Genet. 3:1647-1656(1994).  
Carlini E.J., et al. Submitted (APR-2005) to the EMBL/GenBank/DDBJ databases.  
Dunham A., et al. Nature 428:522-528(2004).  
Oh W.J., et al. Biochem. Biophys. Res. Commun. 259:206-211(1999).  
Bull P.C., et al. Nat. Genet. 5:327-337(1993).