

GPR119 Antibody (aa186-235)
Rabbit Polyclonal Antibody
Catalog # ALS14673**Specification**

GPR119 Antibody (aa186-235) - Product Information

Application	IF, WB, IHC
Primary Accession	Q8TDV5
Reactivity	Human
Host	Rabbit
Clonality	Polyclonal
Calculated MW	37kDa KDa

GPR119 Antibody (aa186-235) - Additional Information**Gene ID** 139760**Other Names**

Glucose-dependent insulinotropic receptor, G-protein coupled receptor 119, GPR119

Target/Specificity

GPR119 Antibody detects endogenous levels of total GPR119 protein.

Reconstitution & Storage

Short term 4°C, long term aliquot and store at -20°C, avoid freeze thaw cycles.

Precautions

GPR119 Antibody (aa186-235) is for research use only and not for use in diagnostic or therapeutic procedures.

GPR119 Antibody (aa186-235) - Protein Information**Name** GPR119**Function**

Receptor for the endogenous fatty-acid ethanolamide oleoylethanolamide (OEA) and lysophosphatidylcholine (LPC). Functions as a glucose-dependent insulinotropic receptor. The activity of this receptor is mediated by G proteins which activate adenylate cyclase. Seems to act through a G(s) mediated pathway.

Cellular Location

Cell membrane; Multi-pass membrane protein.

Tissue Location

Predominantly expressed in the pancreas, especially in the islets.

Volume

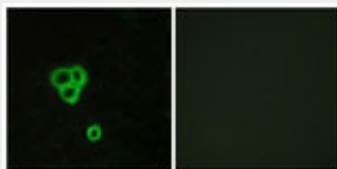
50 µl

GPR119 Antibody (aa186-235) - Protocols

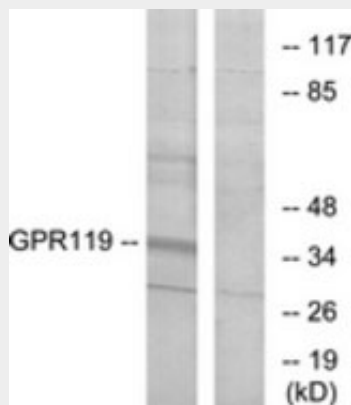
Provided below are standard protocols that you may find useful for product applications.

- [Western Blot](#)
- [Blocking Peptides](#)
- [Dot Blot](#)
- [Immunohistochemistry](#)
- [Immunofluorescence](#)
- [Immunoprecipitation](#)
- [Flow Cytometry](#)
- [Cell Culture](#)

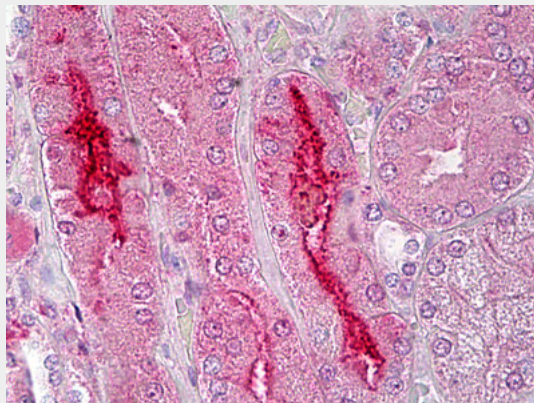
GPR119 Antibody (aa186-235) - Images



Immunofluorescence of MCF7 cells, using GPR119 Antibody.



Western blot of extracts from K562 cells, using GPR119 Antibody.



Anti-GPR119 antibody IHC of human kidney.

GPR119 Antibody (aa186-235) - Background

Receptor for the endogenous fatty-acid ethanolamide oleoylethanolamide (OEA) and lysophosphatidylcholine (LPC). Functions as a glucose-dependent insulinotropic receptor. The activity of this receptor is mediated by G proteins which activate adenylate cyclase. Seems to act through a G(s) mediated pathway.

GPR119 Antibody (aa186-235) - References

Takeda S., et al. FEBS Lett. 520:97-101(2002).

Suwa M., et al. Submitted (JUL-2001) to the EMBL/GenBank/DDBJ databases.

Fredriksson R., et al. FEBS Lett. 554:381-388(2003).

Ross M.T., et al. Nature 434:325-337(2005).

Soga T., et al. Biochem. Biophys. Res. Commun. 326:744-751(2005).