

Neurofilament Antibody (clone 2F11)
Mouse Monoclonal Antibody
Catalog # ALS14628

Specification

Neurofilament Antibody (clone 2F11) - Product Information

Application	IHC
Reactivity	Human
Host	Mouse
Clonality	Monoclonal

Neurofilament Antibody (clone 2F11) - Additional Information

Target/Specificity

Stains the 70 kD and 200 kD polypeptides of neurofilament. Not reactive with small cell lung carcinoma. Does not cross react with GFAP, keratin, vimentin, or desmin.

Reconstitution & Storage

Store at 4°C.

Precautions

Neurofilament Antibody (clone 2F11) is for research use only and not for use in diagnostic or therapeutic procedures.

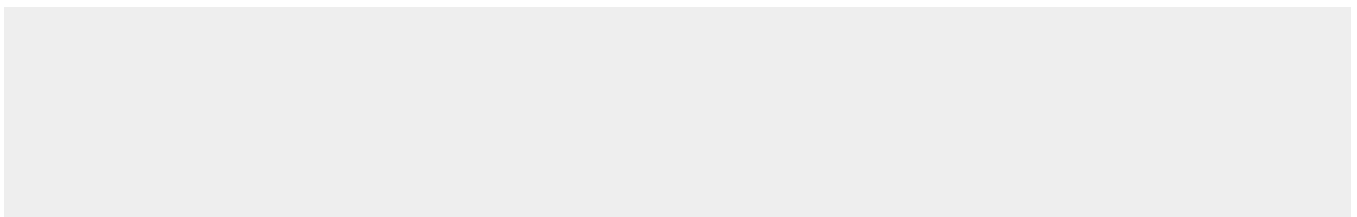
Neurofilament Antibody (clone 2F11) - Protein Information

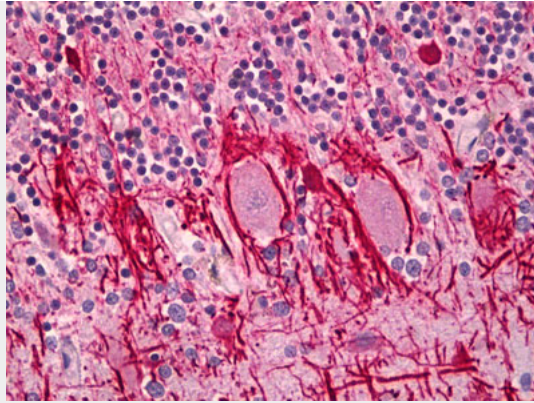
Neurofilament Antibody (clone 2F11) - Protocols

Provided below are standard protocols that you may find useful for product applications.

- [Western Blot](#)
- [Blocking Peptides](#)
- [Dot Blot](#)
- [Immunohistochemistry](#)
- [Immunofluorescence](#)
- [Immunoprecipitation](#)
- [Flow Cytometry](#)
- [Cell Culture](#)

Neurofilament Antibody (clone 2F11) - Images





Anti-Neurofilament antibody IHC of human brain, cerebellum, purkinje cells.