

**CYB5A / Cytochrome b5 Antibody (clone 1A8)**  
**Mouse Monoclonal Antibody**  
**Catalog # ALS14610****Specification**

---

**CYB5A / Cytochrome b5 Antibody (clone 1A8) - Product Information**

Application	IP, IHC
Primary Accession	<a href="#">P00167</a>
Reactivity	Human
Host	Mouse
Clonality	Monoclonal
Calculated MW	15kDa KDa

**CYB5A / Cytochrome b5 Antibody (clone 1A8) - Additional Information****Gene ID** 1528**Other Names**

Cytochrome b5, Mitochondrial cytochrome b5 type A, MCB5, CYB5A, CYB5

**Target/Specificity**

Human Cytochrome b5

**Reconstitution & Storage**

Store at -20°C or lower. Aliquot to avoid repeated freezing and thawing.

**Precautions**

CYB5A / Cytochrome b5 Antibody (clone 1A8) is for research use only and not for use in diagnostic or therapeutic procedures.

**CYB5A / Cytochrome b5 Antibody (clone 1A8) - Protein Information****Name** CYB5A**Synonyms** CYB5**Function**

Cytochrome b5 is a membrane-bound hemoprotein functioning as an electron carrier for several membrane-bound oxygenases.

**Cellular Location**

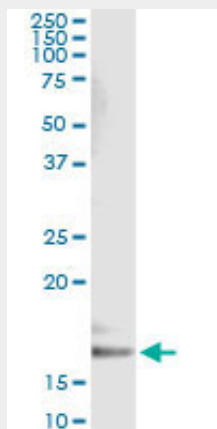
[Isoform 1]: Endoplasmic reticulum membrane; Single-pass membrane protein; Cytoplasmic side. Mitochondrial membrane; Single-pass membrane protein; Cytoplasmic side

**CYB5A / Cytochrome b5 Antibody (clone 1A8) - Protocols**

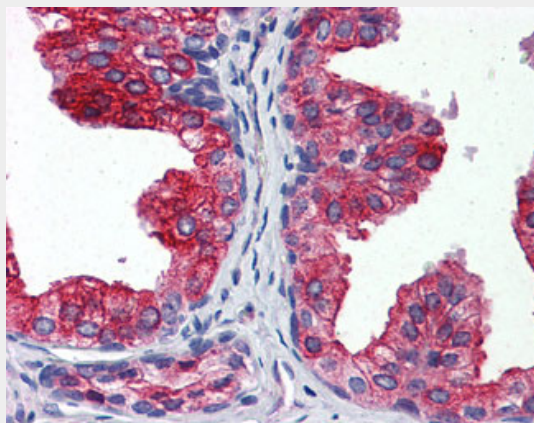
Provided below are standard protocols that you may find useful for product applications.

- [Western Blot](#)
- [Blocking Peptides](#)
- [Dot Blot](#)
- [Immunohistochemistry](#)
- [Immunofluorescence](#)
- [Immunoprecipitation](#)
- [Flow Cytometry](#)
- [Cell Culture](#)

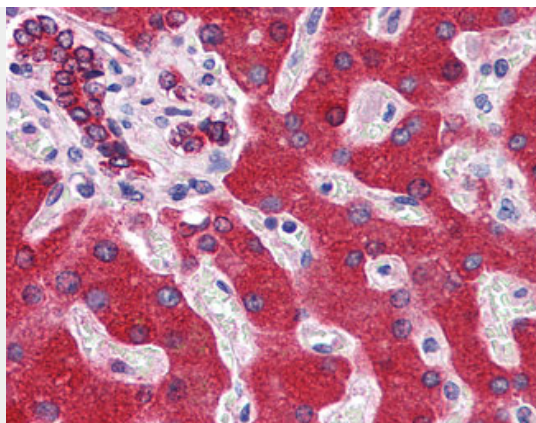
#### **CYB5A / Cytochrome b5 Antibody (clone 1A8) - Images**



Immunoprecipitation of CYB5A transfected lysate using anti-CYB5A monoclonal antibody.



Anti-CYB5A / Cytochrome b5 antibody IHC of human prostate.



Anti-CYB5A / Cytochrome b5 antibody IHC of human liver.

### **CYB5A / Cytochrome b5 Antibody (clone 1A8) - Background**

Cytochrome b5 is a membrane bound hemoprotein which function as an electron carrier for several membrane bound oxygenases.

### **CYB5A / Cytochrome b5 Antibody (clone 1A8) - References**

- Yoo M.,et al.Biochem. Biophys. Res. Commun. 156:576-580(1988).  
Giordano S.J.,et al.Biochem. Biophys. Res. Commun. 178:38-44(1991).  
Li X.R.,et al.Biochem. Biophys. Res. Commun. 209:894-900(1995).  
Melton D.,et al.Submitted (DEC-2002) to the EMBL/GenBank/DDBJ databases.  
Ebert L.,et al.Submitted (JUN-2004) to the EMBL/GenBank/DDBJ databases.