

ABRI / ITM2B Antibody (Internal)
Goat Polyclonal Antibody
Catalog # ALS14582**Specification**

ABRI / ITM2B Antibody (Internal) - Product Information

Application	WB, IHC
Primary Accession	O9Y287
Reactivity	Human, Monkey, Horse, Bovine
Host	Goat
Clonality	Polyclonal
Calculated MW	30kDa KDa

ABRI / ITM2B Antibody (Internal) - Additional Information**Gene ID** 9445**Other Names**

Integral membrane protein 2B, Immature BRI2, imBRI2, Protein E25B, Transmembrane protein BRI, Bri, BRI2, membrane form, Mature BRI2, mBRI2, BRI2 intracellular domain, BRI2 ICD, BRI2C, soluble form, Bri23 peptide, Bri2-23, ABri23, C-terminal peptide, P23 peptide, ITM2B, BRI, BRI2

Target/Specificity

Human ITM2B.

Reconstitution & Storage

Store at -20°C. Minimize freezing and thawing.

Precautions

ABRI / ITM2B Antibody (Internal) is for research use only and not for use in diagnostic or therapeutic procedures.

ABRI / ITM2B Antibody (Internal) - Protein Information**Name** ITM2B**Synonyms** BRI, BRI2**Function**

Plays a regulatory role in the processing of the amyloid-beta A4 precursor protein (APP) and acts as an inhibitor of the amyloid-beta peptide aggregation and fibrils deposition. Plays a role in the induction of neurite outgrowth. Functions as a protease inhibitor by blocking access of secretases to APP cleavage sites. Bri23 peptide prevents aggregation of APP amyloid-beta protein 42 into toxic oligomers.

Cellular Location

[Integral membrane protein 2B]: Golgi apparatus membrane; Single-pass type II membrane protein Note=Immature BRI2 (imBRI2) is cleaved by furin in the Golgi into mBRI2 and a Bri23

peptide. mBRI2 is transported to the plasma membrane and Bri23 peptide is secreted [Bri23 peptide]: Secreted. Note=Detected in the cerebral spinal fluid (CSF).

Tissue Location

Ubiquitous. Expressed in brain.

Volume

50 μ l

ABRI / ITM2B Antibody (Internal) - Protocols

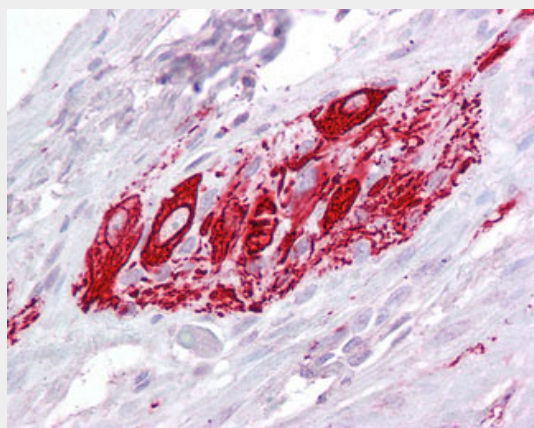
Provided below are standard protocols that you may find useful for product applications.

- [Western Blot](#)
- [Blocking Peptides](#)
- [Dot Blot](#)
- [Immunohistochemistry](#)
- [Immunofluorescence](#)
- [Immunoprecipitation](#)
- [Flow Cytometry](#)
- [Cell Culture](#)

ABRI / ITM2B Antibody (Internal) - Images



ITM2B antibody (1 μ g/ml) staining of Human Hippocampus lysate (35 μ g protein/ml in RIPA buffer).



Anti-ITM2B antibody IHC of human small intestine, myenteric plexus.

ABRI / ITM2B Antibody (Internal) - Background

Plays a regulatory role in the processing of the beta- amyloid A4 precursor protein (APP) and acts as an inhibitor of the beta-amyloid peptide aggregation and fibrils deposition. Plays a role in the induction of neurite outgrowth. Functions as a protease inhibitor by blocking access of secretases to APP cleavage sites. Bri23 peptide prevents aggregation of APP beta-amyloid protein 42 peptide into toxic oligomers.

ABRI / ITM2B Antibody (Internal) - References

Vidal R.,et al.Nature 399:776-781(1999).
Vidal R.,et al.Proc. Natl. Acad. Sci. U.S.A. 97:4920-4925(2000).
Ren S.,et al.Submitted (JAN-2001) to the EMBL/GenBank/DDBJ databases.
Hu R.-M.,et al.Proc. Natl. Acad. Sci. U.S.A. 97:9543-9548(2000).
Kalnine N.,et al.Submitted (MAY-2003) to the EMBL/GenBank/DDBJ databases.