

CHRNB4 Antibody (Internal)
Goat Polyclonal Antibody
Catalog # ALS14570

Specification

CHRNB4 Antibody (Internal) - Product Information

Application	IHC
Primary Accession	P30926
Reactivity	Human, Monkey
Host	Goat
Clonality	Polyclonal
Calculated MW	56kDa KDa

CHRNB4 Antibody (Internal) - Additional Information

Gene ID 1143

Other Names

Neuronal acetylcholine receptor subunit beta-4, CHRNB4

Target/Specificity

Human CHRNB4.

Reconstitution & Storage

Store at -20°C. Minimize freezing and thawing.

Precautions

CHRNB4 Antibody (Internal) is for research use only and not for use in diagnostic or therapeutic procedures.

CHRNB4 Antibody (Internal) - Protein Information

Name CHRNB4

Function

After binding acetylcholine, the AChR responds by an extensive change in conformation that affects all subunits and leads to opening of an ion-conducting channel across the plasma membrane.

Cellular Location

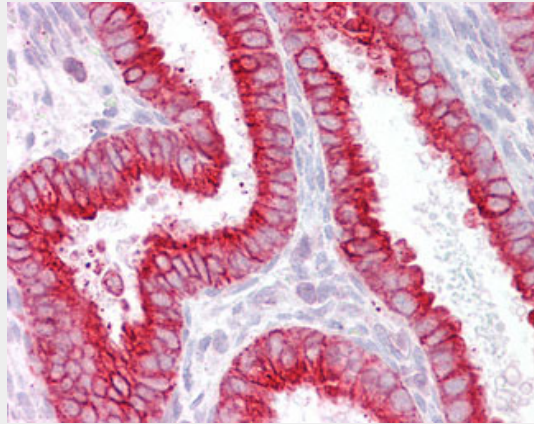
Postsynaptic cell membrane; Multi-pass membrane protein. Cell membrane; Multi-pass membrane protein

CHRNB4 Antibody (Internal) - Protocols

Provided below are standard protocols that you may find useful for product applications.

- [Western Blot](#)
- [Blocking Peptides](#)
- [Dot Blot](#)
- [Immunohistochemistry](#)
- [Immunofluorescence](#)
- [Immunoprecipitation](#)
- [Flow Cytometry](#)
- [Cell Culture](#)

CHRNB4 Antibody (Internal) - Images



Anti-CHRNB4 antibody IHC of human uterus.

CHRNB4 Antibody (Internal) - Background

After binding acetylcholine, the AChR responds by an extensive change in conformation that affects all subunits and leads to opening of an ion-conducting channel across the plasma membrane.

CHRNB4 Antibody (Internal) - References

- Elliott K.J., et al. *J. Mol. Neurosci.* 7:217-228(1996).
Gerzanich V., et al. *Mol. Pharmacol.* 51:320-327(1997).
Groot Kormelink P.J., et al. *FEBS Lett.* 400:309-314(1997).
Duga S., et al. Submitted (MAR-2001) to the EMBL/GenBank/DDBJ databases.
Lev-Lehman E., et al. *J. Hum. Genet.* 46:362-366(2001).