

**LDHA / LDH1 Antibody**  
**Mouse Monoclonal Antibody**  
**Catalog # ALS14541****Specification**

---

**LDHA / LDH1 Antibody - Product Information**

Application	<b>WB, IHC</b>
Primary Accession	<a href="#">P00338</a>
Reactivity	<b>Human</b>
Host	<b>Mouse</b>
Clonality	<b>Monoclonal</b>
Calculated MW	<b>37kDa KDa</b>

**LDHA / LDH1 Antibody - Additional Information****Gene ID** 3939**Other Names**

L-lactate dehydrogenase A chain, LDH-A, 1.1.1.27, Cell proliferation-inducing gene 19 protein, LDH muscle subunit, LDH-M, Renal carcinoma antigen NY-REN-59, LDHA

**Target/Specificity**

Anti-LDHA recognizes recombinant protein LDHA.

**Reconstitution & Storage**

Short term 4°C, long term aliquot and store at -20°C, avoid freeze thaw cycles.

**Precautions**

LDHA / LDH1 Antibody is for research use only and not for use in diagnostic or therapeutic procedures.

**LDHA / LDH1 Antibody - Protein Information****Name** LDHA ([HGNC:6535](#))**Function**

Interconverts simultaneously and stereospecifically pyruvate and lactate with concomitant interconversion of NADH and NAD(+).

**Cellular Location**

Cytoplasm.

**Tissue Location**

Predominantly expressed in anaerobic tissues such as skeletal muscle and liver.

**Volume**

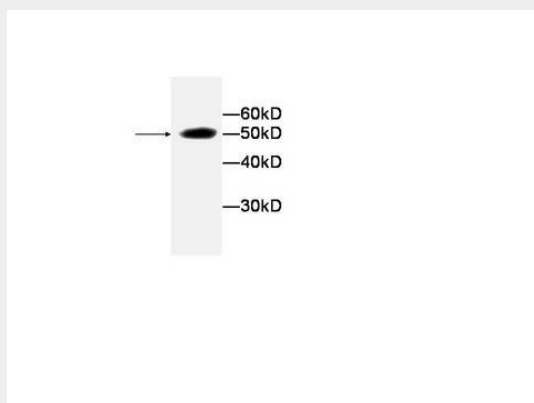
50 µl

## LDHA / LDH1 Antibody - Protocols

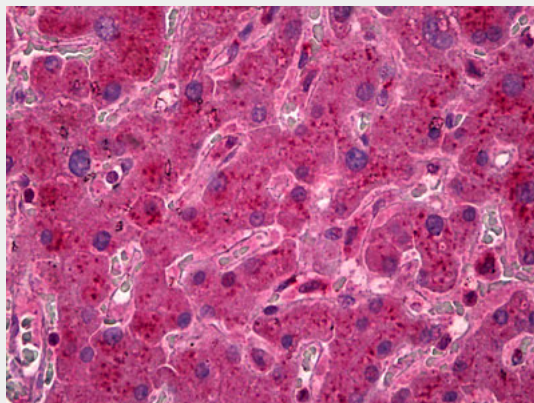
Provided below are standard protocols that you may find useful for product applications.

- [Western Blot](#)
- [Blocking Peptides](#)
- [Dot Blot](#)
- [Immunohistochemistry](#)
- [Immunofluorescence](#)
- [Immunoprecipitation](#)
- [Flow Cytometry](#)
- [Cell Culture](#)

## LDHA / LDH1 Antibody - Images



0



Anti-LDHA antibody IHC of human liver.

## LDHA / LDH1 Antibody - References

- Tsujibo H., et al. *Eur. J. Biochem.* 147:9-15(1985).  
Chung F.Z., et al. *Biochem. J.* 231:537-541(1985).  
Kim J.W., et al. Submitted (SEP-2003) to the EMBL/GenBank/DDBJ databases.  
Ota T., et al. *Nat. Genet.* 36:40-45(2004).  
Halleck A., et al. Submitted (JUN-2004) to the EMBL/GenBank/DDBJ databases.