

WISP2 Antibody (clone 1E11)
Mouse Monoclonal Antibody
Catalog # ALS14520**Specification**

WISP2 Antibody (clone 1E11) - Product Information

Application	WB, IHC
Primary Accession	O76076
Reactivity	Human
Host	Mouse
Clonality	Monoclonal
Calculated MW	27kDa KDa

WISP2 Antibody (clone 1E11) - Additional Information**Gene ID** 8839**Other Names**

WNT1-inducible-signaling pathway protein 2, WISP-2, CCN family member 5, Connective tissue growth factor-like protein, CTGF-L, Connective tissue growth factor-related protein 58, WISP2, CCN5, CT58, CTGFL

Target/Specificity

Human WISP2

Reconstitution & Storage

Short term 4°C, long term aliquot and store at -20°C, avoid freeze thaw cycles.

Precautions

WISP2 Antibody (clone 1E11) is for research use only and not for use in diagnostic or therapeutic procedures.

WISP2 Antibody (clone 1E11) - Protein Information**Name** CCN5 ([HGNC:12770](#))**Synonyms** CT58, CTGFL, WISP2**Function**

May play an important role in modulating bone turnover. Promotes the adhesion of osteoblast cells and inhibits the binding of fibrinogen to integrin receptors. In addition, inhibits osteocalcin production.

Cellular Location

Secreted.

Tissue Location

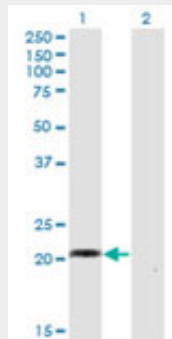
Expressed in primary osteoblasts, fibroblasts, ovary, testes, and heart

WISP2 Antibody (clone 1E11) - Protocols

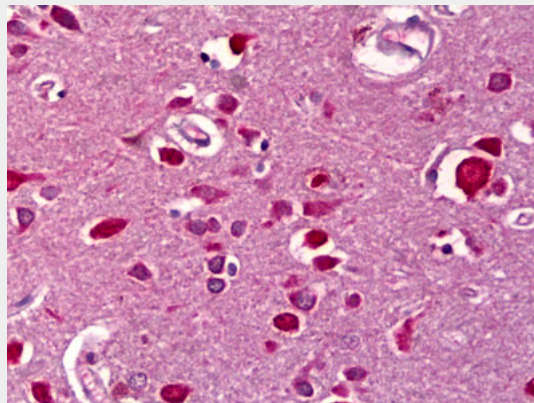
Provided below are standard protocols that you may find useful for product applications.

- [Western Blot](#)
- [Blocking Peptides](#)
- [Dot Blot](#)
- [Immunohistochemistry](#)
- [Immunofluorescence](#)
- [Immunoprecipitation](#)
- [Flow Cytometry](#)
- [Cell Culture](#)

WISP2 Antibody (clone 1E11) - Images



Western blot of WISP2 expression in transfected 293T cell line by WISP2 monoclonal antibody,...



Anti-WISP2 antibody IHC of human brain, cortex.

WISP2 Antibody (clone 1E11) - Background

May play an important role in modulating bone turnover. Promotes the adhesion of osteoblast cells and inhibits the binding of fibrinogen to integrin receptors. In addition, inhibits osteocalcin production.

WISP2 Antibody (clone 1E11) - References

- Kumar S., et al. J. Biol. Chem. 274:17123-17131(1999).
Rowles J., et al. Submitted (JUN-1998) to the EMBL/GenBank/DDBJ databases.
Pennica D., et al. Proc. Natl. Acad. Sci. U.S.A. 95:14717-14722(1998).

Clark H.F.,et al.Genome Res. 13:2265-2270(2003).
Ota T.,et al.Nat. Genet. 36:40-45(2004).