

MDH / MDH2 Antibody (clone 1G12)
Mouse Monoclonal Antibody
Catalog # ALS14510

Specification

MDH / MDH2 Antibody (clone 1G12) - Product Information

Application	WB, IHC
Primary Accession	P40926
Reactivity	Human
Host	Mouse
Clonality	Monoclonal
Calculated MW	36kDa KDa

MDH / MDH2 Antibody (clone 1G12) - Additional Information

Gene ID 4191

Other Names

Malate dehydrogenase, mitochondrial, 1.1.1.37, MDH2

Target/Specificity

Human MDH2

Reconstitution & Storage

Short term 4°C, long term aliquot and store at -20°C, avoid freeze thaw cycles.

Precautions

MDH / MDH2 Antibody (clone 1G12) is for research use only and not for use in diagnostic or therapeutic procedures.

MDH / MDH2 Antibody (clone 1G12) - Protein Information

Name MDH2

Cellular Location

Mitochondrion matrix {ECO:0000250|UniProtKB:P04636}

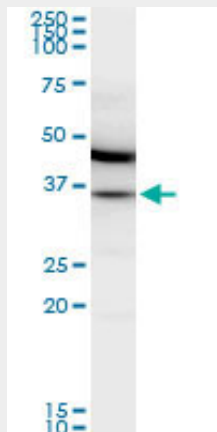
MDH / MDH2 Antibody (clone 1G12) - Protocols

Provided below are standard protocols that you may find useful for product applications.

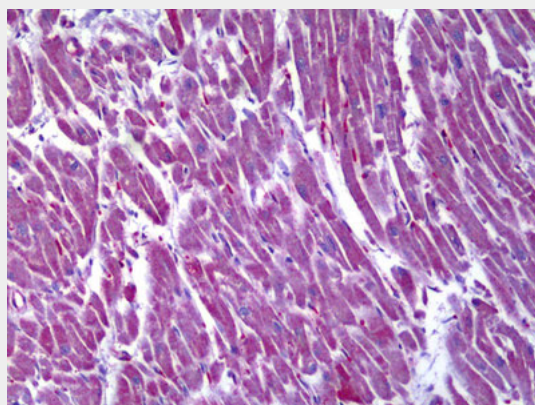
- [Western Blot](#)
- [Blocking Peptides](#)
- [Dot Blot](#)
- [Immunohistochemistry](#)
- [Immunofluorescence](#)

- [Immunoprecipitation](#)
- [Flow Cytometry](#)
- [Cell Culture](#)

MDH / MDH2 Antibody (clone 1G12) - Images



MDH2 monoclonal antibody, clone 1G12. Western blot of MDH2 expression in IMR-32.



Anti-MDH2 antibody IHC of human heart.

MDH / MDH2 Antibody (clone 1G12) - References

- Hu G.,et al.Submitted (FEB-1998) to the EMBL/GenBank/DDBJ databases.
Ota T.,et al.Nat. Genet. 36:40-45(2004).
Hillier L.W.,et al.Nature 424:157-164(2003).
Mural R.J.,et al.Submitted (JUL-2005) to the EMBL/GenBank/DDBJ databases.
Rush J.,et al.Nat. Biotechnol. 23:94-101(2005).